
SUBSCRIPTION FORM

Name: _____

Address: _____

City: _____

State: _____ ZIP: _____

Make your check for \$10 (\$12 Canadian and foreign) to *Walt Whitman Quarterly Review* (or *WWQR*—it's easier!) and mail to:

Walt Whitman Quarterly Review (or *WWQR*)
Department of English
308 EPB
The University of Iowa
Iowa City, Iowa 52242

THE STONE HOUSE PRESS

Limited Editions of Hand-Crafted Books & Broad-sides

RECENT PUBLICATIONS

PAINTER'S CREDO by Jon Cornin. Critical reflections on art. Illustrated by the artist/author. 119 pages. In two colors, casebound. 1985. \$59.

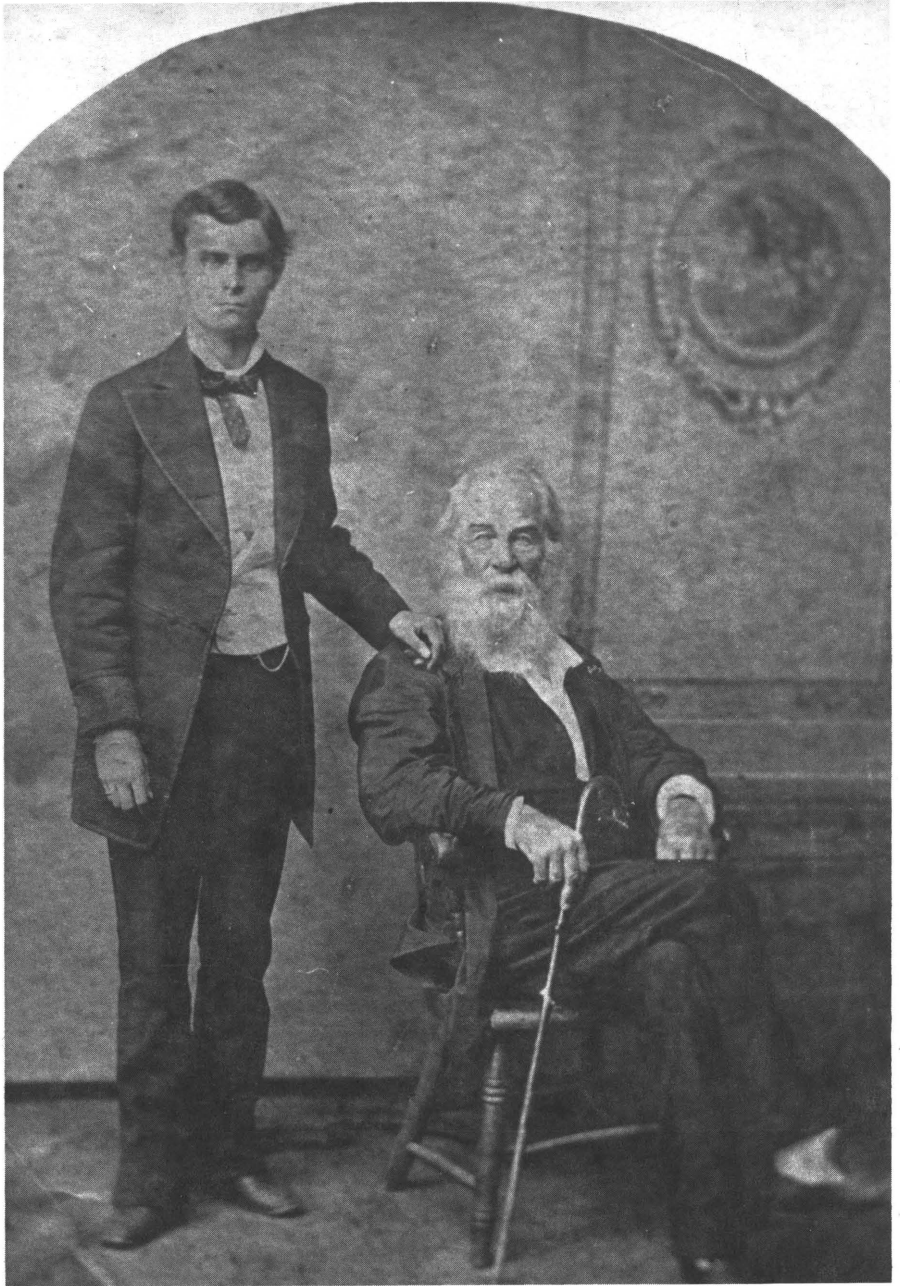
CHAPBOOKS, with wood engravings by John De Pol. In two colors, paper wrappers, 1985: **EIGHT POEMS FOR SAINT WALT**, by William Heyen. A tribute to Walt Whitman. 19 pages. \$20; **WAKING TO THE DAY**, by Dorothy Hatch. First book by a gifted poet. 16 pages. \$20.

FORTHCOMING

UNDER OPEN SKY: Poets on William Cullen Bryant. Edited by Norbert Krapf. With 17 original wood engravings by John De Pol. A reappraisal of WCB by present-day American poets, in essays & poems. 125 pages. Printed in two colors, casebound. Fall 1986. \$65.

§For order information & complete Press list, *Books & Broad-sides 1986-1987*:

THE STONE HOUSE PRESS
P.O. Box 196, Roslyn, New York 11576



An Unknown Photograph of Whitman and Harry Stafford. See p. 51.