

WALT WHITMAN QUARTERLY REVIEW

VOLUME TWELVE

NUMBER ONE

SUMMER 1994

WALT WHITMAN QUARTERLY REVIEW

Volume 12

Summer 1994

Number 1

Walt Whitman Quarterly Review is a literary quarterly sponsored by the Graduate College and the Department of English and published by The University of Iowa.

EDITOR

Ed Folsom, *The University of Iowa*

EDITOR EMERITUS

William White, *Birmingham, Michigan*

EDITORIAL BOARD

Gay Wilson Allen, *New York University (Emeritus)*

Harold Aspiz, *California State University, Long Beach*

Roger Asselineau, *Université de Paris—Sorbonne*

Betsy Erkkila, *University of Pennsylvania*

Arthur Golden, *City College, City University of New York*

Jerome Loving, *Texas A&M University*

James E. Miller, Jr., *University of Chicago*

M. Wynn Thomas, *University of Wales, Swansea*

ASSISTANT EDITOR

Jessica Renaud, *The University of Iowa*

BUSINESS MANAGER

Mary Hussmann, *The University of Iowa*

Address all correspondence to: *Walt Whitman Quarterly Review*, The University of Iowa, 308 English Philosophy Bldg., Iowa City, IA 52242-1492.

CONTENTS

SPECIAL FEATURE

- 1 "Pete the Great": A Biography of Peter Doyle / Martin G. Murray

REVIEWS

- 52 Ed Folsom, *Walt Whitman's Native Representations* / M. Jimmie Killingsworth
- 57 Ed Folsom, ed., *Walt Whitman: The Centennial Essays* / David S. Reynolds

BIBLIOGRAPHY

- 59 Whitman: A Current Bibliography / Ed Folsom
- 63 ANNOUNCEMENTS

Front cover: Facsimile of the frontispiece of the 1855 edition of *Leaves of Grass* / Courtesy Special Collections Department, The University of Iowa Libraries

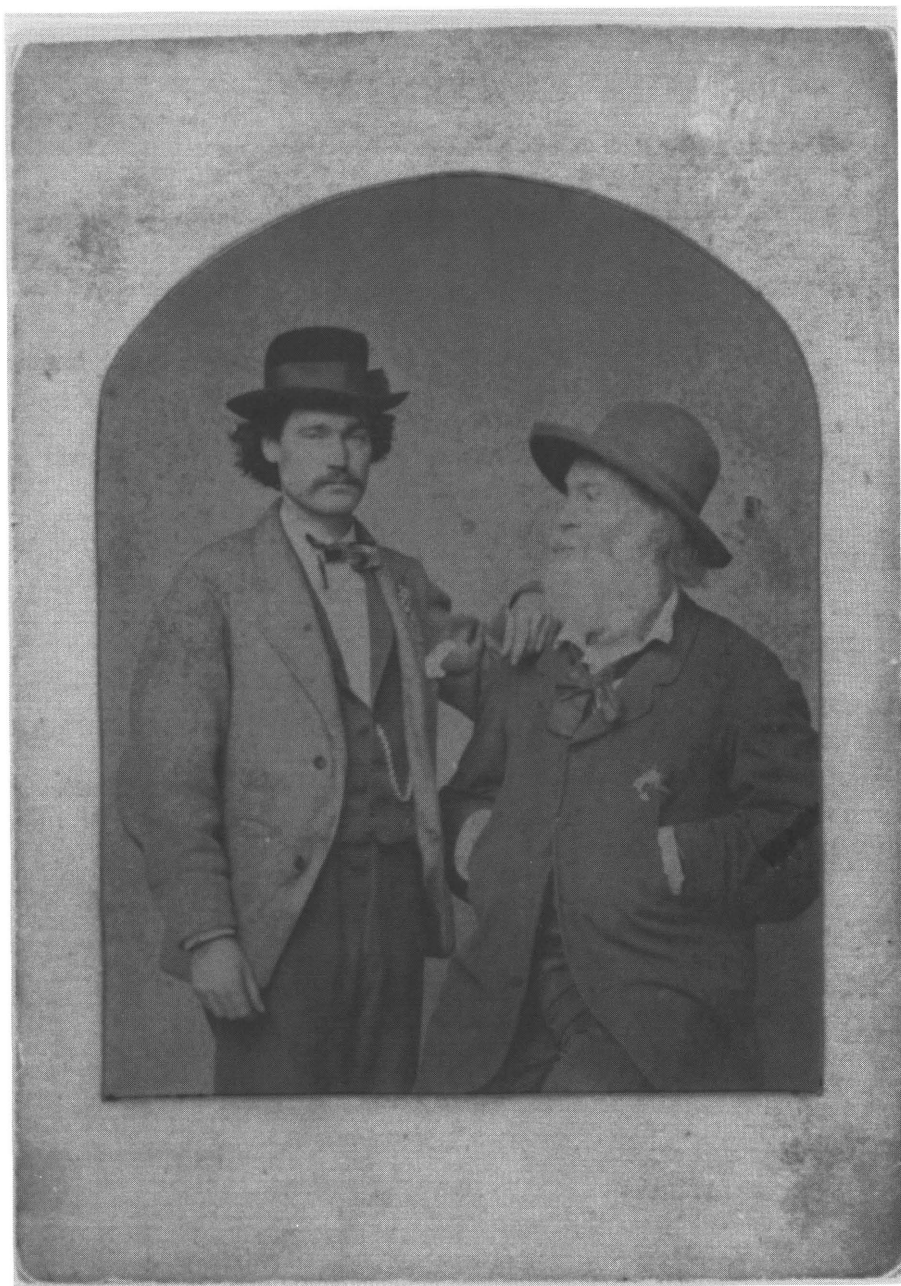


Figure 1. Peter Doyle and Walt Whitman, around 1868. Photograph by M. P. Rice, Washington, D.C. Courtesy William R. Perkins Library, Duke University, Trent Collection.