

SUBSCRIPTION INFORMATION

Please address all subscription correspondence to:

Walt Whitman Quarterly Review
Publications Order Department
186 MBSB
2222 Old Highway 218 S
Iowa City, Iowa 52242-1606

TO SUBSCRIBE

Name _____

Address _____

City _____

State _____ ZIP _____

- \$20.00 per year individuals / \$25.00 per year institutions
- Add \$5 postage surcharge outside the US
- Payment in US dollars only
- Multiple-year subscriptions accepted
- To pay by credit card, call 1-800-235-2665

CHANGE OF ADDRESS

Former Address: (Please include a mailing label if available)

Name _____

Address _____

City _____

State _____ ZIP _____

New Address

Address _____

City _____

State _____ ZIP _____

WHITMAN PUBLICATIONS TO ADD TO YOUR LIBRARY

BOOKS

Homage to Walt Whitman, four miniature books, poetry by Whitman, illustrations by Guido Villa. \$25.00.

Walt Whitman in Europe Today, ed. by Wm. White and Roger Asselineau. \$5.00

SPECIAL ISSUES

Whitman Correspondence, ed. by Edwin Haviland Miller. A Second Supplement with a Revised Calendar of letters written to Whitman. \$7.00

BACK ISSUES (SPECIFY VOLUME, NUMBER, AND YEAR)

Walt Whitman Review. \$3.50.

We have limited supplies of most issues.

Walt Whitman Quarterly Review. \$5.00.

Almost all back issues are available.

Walt Whitman Long Islander Supplement (26 May 1966; 25 May 1967; 30 May 1968; 24 June 1976; 2 June 1983). These are \$2.00 a piece OR all 5 for \$10.00.

POSTER

Walt Whitman: The Centennial Conference. \$7.50.

Postage and Handling

\$1.00-\$5.00 add \$1.00

\$6.00-10.00 add \$2.00

Add \$1.00 for each additional

\$5.00 increment.

QTY

EACH

TOTAL

SUBTOTAL		
SHIPPING		
TOTAL		

Make checks payable to *Walt Whitman Quarterly Review* and mail to: Walt Whitman Quarterly Review, Department of English, The University of Iowa, 308 English Philosophy Bldg., Iowa City, IA 52242-1492.

	Name _____
SHIP TO	Street _____
	City/State/ZIP _____

GUIDELINES FOR CONTRIBUTORS

GENERAL CONSIDERATIONS OF STYLE

Essays: Place the title two inches below the top of the page, the author's name two inches below the title, and the text two inches below the author's name. The affiliation of the contributor follows the essay.

Notes, Book Reviews, Bibliographies: These are configured like essays, *except* the author's name follows the work.

References: Follow *The MLA Style Sheet*, Second Edition. Mark references in the text with raised footnote numbers, *not* author-year citations in parentheses. Double-spaced endnotes should follow the essay on a new page headed "Notes."

Do not use Latin abbreviations for repeated citations. Do not condense the names of publishers or titles. Make references complete so a bibliography is unnecessary.

QUOTING AND CITING WALT WHITMAN'S WRITINGS

The standard edition of Whitman's work is *The Collected Writings of Walt Whitman*, twenty-two volumes published by the New York University Press under the general editorship of Gay Wilson Allen and Sculley Bradley. Citations and quotations from Whitman's writings should be keyed to the specific volumes in this edition whenever possible.

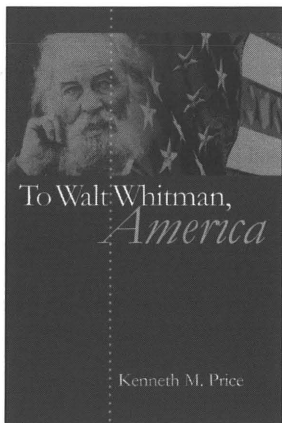
After the initial citation, contributors should abbreviate the titles of the *Collected Writings* in the endnotes as follows:

- LG** *Leaves of Grass*, Comprehensive Reader's Edition, edited by Harold W. Blodgett and Sculley Bradley (1965).
- LG Var.** *Leaves of Grass: A Textual Variorum of the Printed Poems*, edited by Sculley Bradley, Harold W. Blodgett, Arthur Golden, William White. 3 vols. (1980). Vol. 1: Poems 1855-1856; Vol. 2: Poems 1860-1867; Vol. 3: Poems 1870-1891.
- EPF** *The Early Poems and Fiction*, edited by Thomas L. Brasher (1963).
- PW** *Prose Works 1892*, edited by Floyd Stovall. Vol. 1: *Specimen Days* (1963); Vol. 2: *Collect and Other Prose* (1964).
- Corr.** *The Correspondence*, edited by Edwin Haviland Miller. Vol. 1: 1842-1867 (1961); Vol. 2: 1868-1875 (1961); Vol. 3: 1876-1885 (1964); Vol. 4: 1886-1889 (1969); Vol. 5: 1890-1892 (1969); Vol. 6: A Supplement with a Composite Index (1977).
- DBN** *Daybooks and Notebooks*, edited by William White (1978). Vol. 1: Daybooks, 1876-November 1881; Vol. 2: Daybooks, December 1881-1891; Vol. 3: Diary in Canada, Notebooks, Index.
- NUPM** *Notebooks and Unpublished Prose Manuscripts*, edited by Edward F. Grier (1984). Vol. 1: Family Notes and Autobiography, Brooklyn and New York; Vol. 2: Washington; Vol. 3: Camden; Vols. 4, 5, 6: Notes.

PROCEDURES FOR SUBMITTING WORK

Submit *two* typescripts of your work. To have one returned, include a self-addressed, stamped envelope.

Address all correspondence to: Editor, *Walt Whitman Quarterly Review*, The University of Iowa, 308 English Philosophy Bldg., Iowa City, IA 52242-1492. Our telephone number is 319/335-0454. Contributors whose work is published or publishers whose book is reviewed will receive two complimentary copies of *WWQR*.



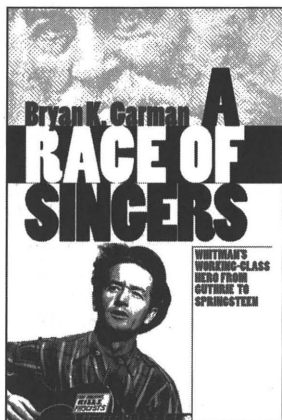
To Walt Whitman, America

KENNETH M. PRICE

"A grand sweeping panorama of America's response to Whitman, from Ben Shahn to Marilyn Monroe, from D. W. Griffith to Jim Jarmusch, from Edith Wharton to Ishmael Reed. It's a dizzying and revelatory ride through the past century, and along the way we learn a great deal about how Whitman keeps forcing Americans to face the ways that evolving notions about race and sexuality and gender and class continue to alter the very definition of democracy. It's a book about America waking up to Whitman."—Ed Folsom, author of *Walt Whitman's Native Representations*

192 pp. \$49.95 cloth / \$19.95 paper

A Main Selection of the Readers' Subscription



A Race of Singers

Whitman's Working-Class Hero from Guthrie to Springsteen

BRYAN K. GARMAN

"A strong work . . . that encourages us to think about the many 'traditions' that defined American music in the 20th century."—*Journal of American History*

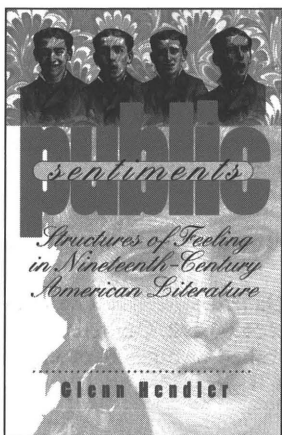
"Well written . . . provocative."—*Library Journal*

"Contributes tremendously to our understanding of the ways in which Whitman's much-discussed male homoeroticism is really part of a larger formulation of white male working class community."

—Cecelia Tichi, Vanderbilt University

Cultural Studies of the United States

352 pp. \$49.95 cloth / \$18.95 paper



Public Sentiments

Structures of Feeling in Nineteenth-Century American Literature

GLENN HENDLER

Examines works by Horatio Alger, Louisa May Alcott, Martin Delany, Walt Whitman, Mark Twain, Henry James, and others.

"A cogent, eloquent, and forceful contribution to studies of sentimentalism and culture in American literary studies."—*American Literature*

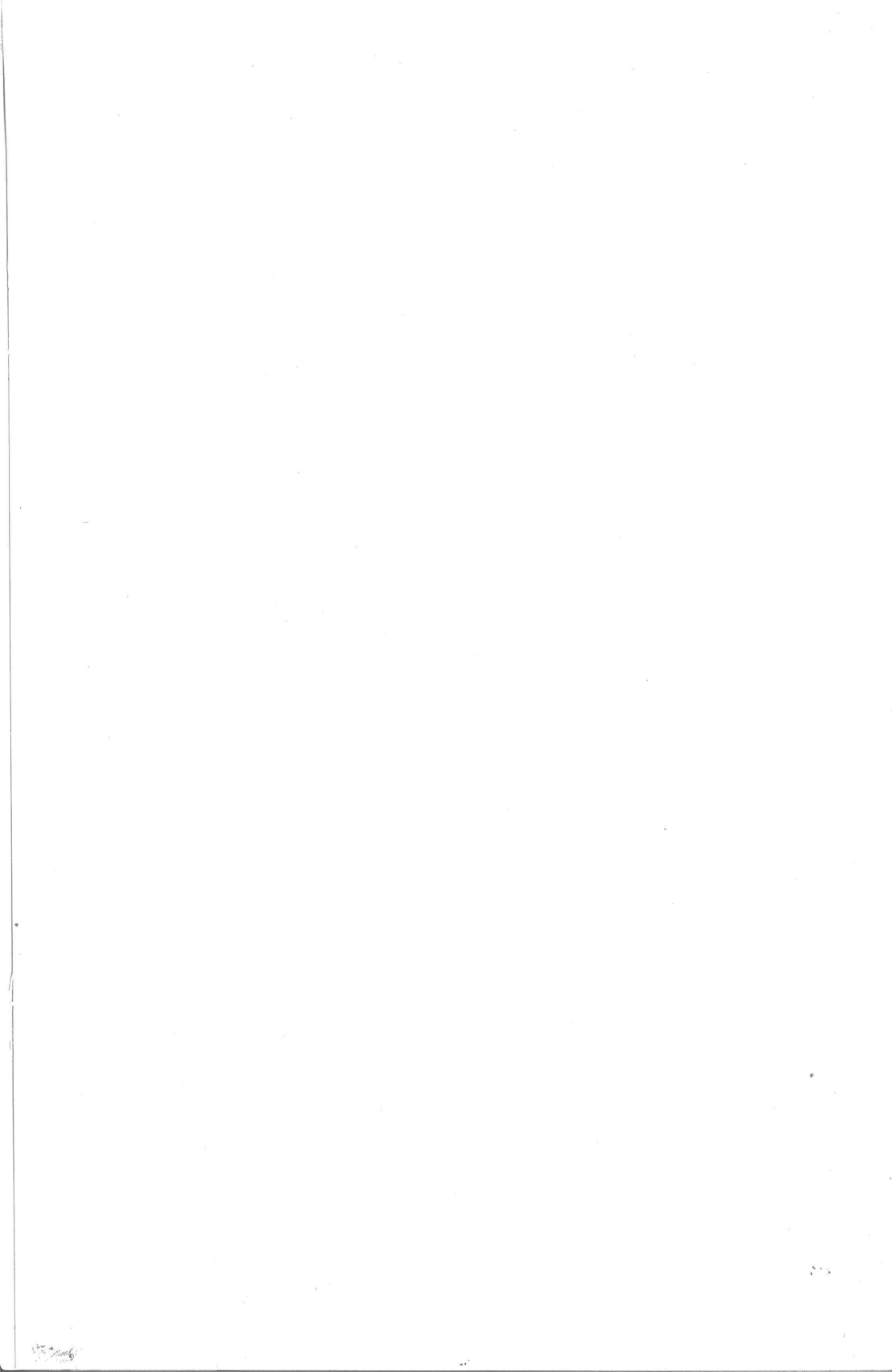
"Sophisticated, yet lively and readable. . . Especially valuable is its emphasis on the masculine experience of affect."—*South Atlantic Review*

288 pp. \$45.00 cloth / \$18.95 paper

**THE UNIVERSITY OF
NORTH CAROLINA PRESS**

at bookstores or 800-848-6224

www.uncpress.unc.edu



7

Was it I who walked the
 earth disclaiming all except
 what I had in myself?
 Was it I boasting how complete
 I was in myself?
 O little I counted the comrade
 indispensable to me!
 O how my soul — How the
 soul of man feeds, re-
 joices in its lovers, its
 dear friends!
 And now I care not to
 walk the earth unless
 a lover, a dear friend,
 walk by my side.

Calamus

Whitman's Unpublished "Calamus" Poem, "Was it I who walked the earth . . ."; see pp. 109-130. Walt Whitman Collection (#3829), Clifton Waller Barrett Library, Special Collections, University of Virginia Library.