

WALT WHITMAN QUARTERLY REVIEW

VOLUME ELEVEN

NUMBER FOUR

SPRING 1994

WALT WHITMAN QUARTERLY REVIEW

Volume 11

Spring 1994

Number 4

Walt Whitman Quarterly Review is a literary quarterly sponsored by the Graduate College and the Department of English and published by The University of Iowa.

EDITOR

Ed Folsom, *The University of Iowa*

EDITOR EMERITUS

William White, *Birmingham, Michigan*

EDITORIAL BOARD

Gay Wilson Allen, *New York University (Emeritus)*

Harold Aspiz, *California State University, Long Beach*

Roger Asselineau, *Université de Paris—Sorbonne*

Arthur Golden, *City College, City University of New York*

Jerome Loving, *Texas A&M University*

James E. Miller, Jr., *University of Chicago*

M. Wynn Thomas, *University of Wales, Swansea*

ASSISTANT EDITOR

Nina Metzner, *The University of Iowa*

BUSINESS MANAGER

Mary Hussmann, *The University of Iowa*

Address all correspondence to: *Walt Whitman Quarterly Review*, The University of Iowa, 308 English Philosophy Bldg., Iowa City, IA 52242-1492.

CONTENTS

ESSAYS

- 163 Letters from Warry / Joann P. Krieg
- 174 "The Original Eye": Whitman, Schelling and the Return to Origins / Robert J. Scholnick

NOTES

- 200 *On the Back Cover: Whitman Naked?* / Ed Folsom

REVIEWS

- 203 James Dougherty, *Walt Whitman and the Citizen's Eye* / M. Jimmie Killingsworth
- 206 Joel Myerson, ed., *Walt Whitman: A Descriptive Bibliography* / Jerome Loving
- 209 Jay Parini, ed., and Brett C. Millier, assoc. ed., *The Columbia History of American Poetry* / R. W. French

BIBLIOGRAPHY

- 213 *Whitman: A Current Bibliography* / Ed Folsom
- 221 ANNOUNCEMENT

Front cover: Facsimile of the frontispiece of the 1855 edition of *Leaves of Grass* / Courtesy Special Collections Department, The University of Iowa Libraries

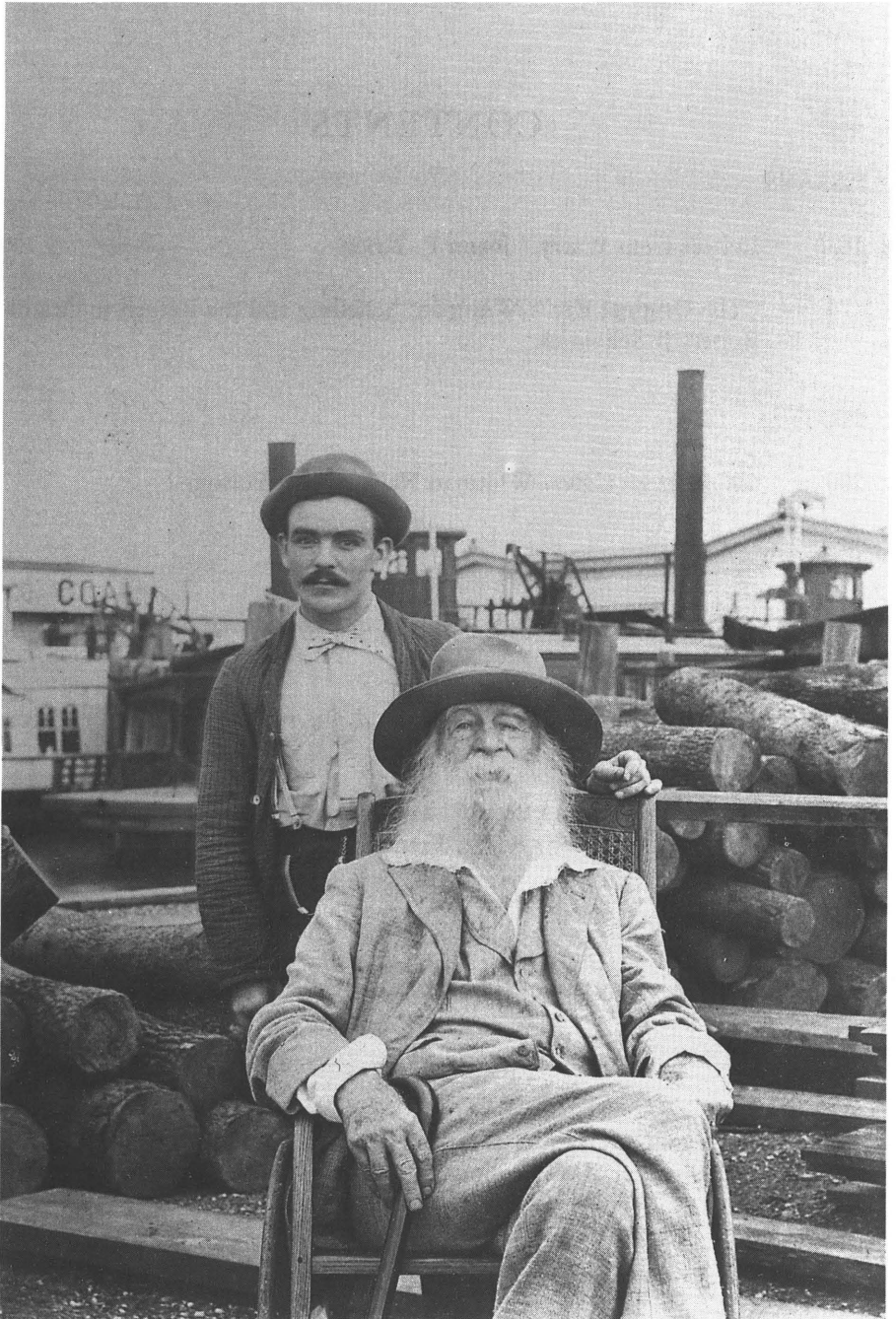


Figure 1. Whitman and Warren Fritzinger on the Camden wharf, 1890. Photograph by Dr. John Johnston. Charles E. Feinberg Whitman Collection, Library of Congress.