

## SUBSCRIPTION INFORMATION

Please address all subscription correspondence to:

*Walt Whitman Quarterly Review*  
P.O. Box 0567  
Selmer, TN 38375-0567

Subscription customer service: [wwqr@magcs.com](mailto:wwqr@magcs.com)

Website for subscription: <http://wwqr.magcs.com/subscribe>

Website for renewals: <http://wwqr.magcs.com/renew>

### TO SUBSCRIBE

Name \_\_\_\_\_

Address \_\_\_\_\_

City \_\_\_\_\_

State \_\_\_\_\_ ZIP \_\_\_\_\_

- \$35.00 per year individuals / \$45.00 per year institutions
- Add \$10 postage surcharge outside the US
- Payment in US dollars only
- Multiple-year subscriptions accepted
- To pay by credit card, call 1-888-400-4961

### CHANGE OF ADDRESS

Former Address: (Please include a mailing label if available)

Name \_\_\_\_\_

Address \_\_\_\_\_

City \_\_\_\_\_

State \_\_\_\_\_ ZIP \_\_\_\_\_

New Address

Address \_\_\_\_\_

City \_\_\_\_\_

State \_\_\_\_\_ ZIP \_\_\_\_\_



## GUIDELINES FOR CONTRIBUTORS

### GENERAL CONSIDERATIONS OF STYLE

*Essays:* Place the title two inches below the top of the page, the author's name two inches below the title, and the text two inches below the author's name. The affiliation of the contributor follows the essay.

*Notes, Book Reviews, Bibliographies:* These are configured like essays, except the author's name follows the work.

*References:* Follow *The MLA Style Sheet*, Second Edition. Mark references in the text with raised footnote numbers, not author-year citations in parentheses. Double-spaced endnotes should follow the essay on a new page headed "Notes." Do not use Latin abbreviations for repeated citations. Do not condense the names of publishers or titles. Make references complete so that a bibliography is unnecessary. When citing journal articles, give the volume number of the journal followed by the issue date in parentheses, followed by a comma, followed by the page number(s)—e.g., Joann P. Krieg, "Whitman and Modern Dance," *Walt Whitman Quarterly Review* 24 (Spring 2007), 208-209.

### QUOTING AND CITING WALT WHITMAN'S WRITING

When quoting from individual editions of *Leaves of Grass* (the 1855, 1856, 1860, 1867, 1870-1871, 1881), please use the facsimiles available on *The Walt Whitman Archive* ([www.whitmanarchive.org](http://www.whitmanarchive.org)), and cite the edition, date, and page numbers, followed by "Available on the *Walt Whitman Archive* ([www.whitmanarchive.org](http://www.whitmanarchive.org))." Do not list the URL of individual page images or the date accessed.

The standard edition of Whitman's work is *The Collected Writings of Walt Whitman*, twenty-two volumes published by the New York University Press under the general editorship of Gay Wilson Allen and Sculley Bradley, and supplemented with volumes published by the University of Iowa Press and Peter Lang. Citations and quotations from Whitman's writings should be keyed to the specific volumes in this edition whenever possible. The Library of America edition of Whitman's *Poetry and Prose* is also acceptable.

After the initial citation, contributors should abbreviate the titles of the *Collected Writings* in the endnotes as follows:

<i>LG</i>	<i>Leaves of Grass</i> , Comprehensive Reader's Edition, edited by Harold W. Blodgett and Sculley Bradley (1965).
<i>LGVar.</i>	<i>Leaves of Grass: A Textual Variorum of the Printed Poems</i> , edited by Sculley Bradley, Harold W. Blodgett, Arthur Golden, William White. 3 vols. (1980).
<i>EPF</i>	<i>The Early Poems and Fiction</i> , edited by Thomas L. Brasher (1963)
<i>PW</i>	<i>Prose Works 1892</i> , edited by Floyd Stovall. Vol. 1: <i>Specimen Days</i> (1963); Vol. 2: <i>Collect and Other Prose</i> (1964).
<i>Corr</i>	<i>The Correspondence</i> , edited by Edwin Haviland Miller. Vol. 1 1842-1867 (1961); Vol. 2: 1868-1875 (1961); Vol. 3: 1876-1885 (1964); Vol. 4: 1886-1889 (1969); Vol. 5: 1890-1892 (1969); Vol. 6: A Supplement with a Composite Index (1977); Vol. 7, edited by Ted Genoways (2004).
<i>DBN</i>	<i>Daybooks and Notebooks</i> , edited by William White. 3 vols. (1978).

- NUPM*            *Notebooks and Unpublished Prose Manuscripts*, edited by Edward F. Grier. 6 vols. (1984).
- Journ*            *The Journalism*, edited by Herbert Bergmann, Douglas A. Noverr, and Edward J. Recchia. Vol. 1: 1834-1846 (1998); Vol. 2: 1846-1848 (2003).

#### PROCEDURES FOR SUBMITTING WORK

To submit original work, please visit the WWQR website at: <http://ir.uiowa.edu/wwqr>.

Address all correspondence to Editor, *Walt Whitman Quarterly Review*, The University of Iowa, 308 English Philosophy Bldg., Iowa City, IA, 52242-1492. Our telephone number is (319)335-0592. Contributors whose work is published will receive two complimentary copies of *WWQR*.

---

#### ORDERING BACK ISSUES

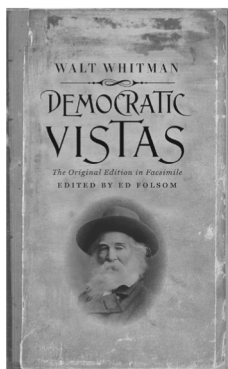
Almost all back issues are available for purchase. Single issues are \$6.00 and double issues are \$12.00 (including shipping charges). When ordering please specify the volume number, issue number, and year of publication for each issue you would like to purchase. Make checks payable to *Walt Whitman Quarterly Review* and mail your order to: Walt Whitman Quarterly Review, Department of English, The University of Iowa, 308 English-Philosophy Bldg., Iowa City, IA, 52242-1492.

The following issues are *not* available for purchase: 4:2/3 (Fall/Winter 1986/1987); 5:4 (Spring 1988); 12:1 (Summer 1994); 13 1/2 (Summer/Fall 1995); 16 3/4 (Winter/Spring 1999).

## THE IOWA WHITMAN SERIES

Ed Folsom, series editor

### *New & Recent Titles*



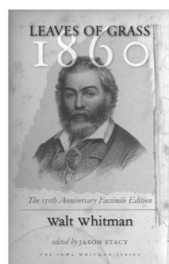
### **Democratic Vistas**

*The Original Edition in Facsimile*

by Walt Whitman · edited by Ed Folsom

“By an extraordinary feat of scholarship and interpretation, Ed Folsom’s new edition of *Democratic Vistas* presents this difficult work, troubled yet ecstatic, as something of great significance to our own times. With its historical notes and annotated bibliography and the important new scholarship in the introduction, this edition offers both context and tools for analytical interpretation.”—Alan Trachtenberg, Yale University

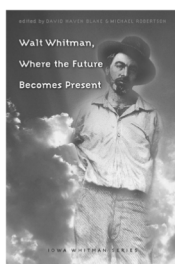
214 PAGES · \$24.95 PAPERBACK



**Leaves of Grass, 1860: *The 150th Anniversary Facsimile Edition***

by Walt Whitman · edited by Jason Stacy

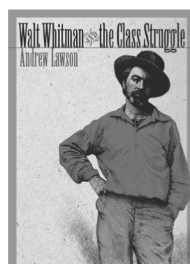
550 PAGES · \$24.95 PAPERBACK



**Walt Whitman, *Where the Future Becomes Present***

edited by David Haven Blake & Michael Robertson

200 PAGES · 12 PHOTOS · \$39.95 HARDCOVER



**Walt Whitman & the Class Struggle** · by Andrew Lawson

186 PAGES · 2 PHOTOS · \$29.95 HARDCOVER

**IOWA** *where great writing begins*  
UNIVERSITY OF IOWA PRESS

www.uiowapress.org · order toll free 800.621.2736

# Great News!

The University of Nebraska-Lincoln has been offered a \$500,000 "We the People" NEH challenge grant to support the building of a permanent endowment for the *Walt Whitman Archive*. The grant carries a 3 to 1 matching requirement, and thus we need to raise \$1.5 million dollars in order to receive the NEH funds.

To raise \$1.5 million dollars is a huge task but it is for a remarkably important cause: to make freely available all of the writings of the great poet of democracy.

Big accomplishments are achieved through a series of small steps. Please add your name to the list of supporters of the *Whitman Archive*. Visit [www.whitmanarchive.org](http://www.whitmanarchive.org) to make your gift.



The Walt Whitman Archive  
Ed Folsom & Kenneth M. Price, Editors

**Published Works**  
Leaves; Periodical Printings; Foreign Editions

**Manuscripts**  
Transcriptions; Images; Finding Aids

**Biography & Correspondence**  
Ltr's; Letters; Conversations

**Criticism**  
Reviews; Commentary; Disciples; Bibliography

**Pictures & Sound**  
Portraits of Whitman; Audio

**Resources**  
Advanced Search; Teaching Materials

**About the Archive**  
People; Policies; History

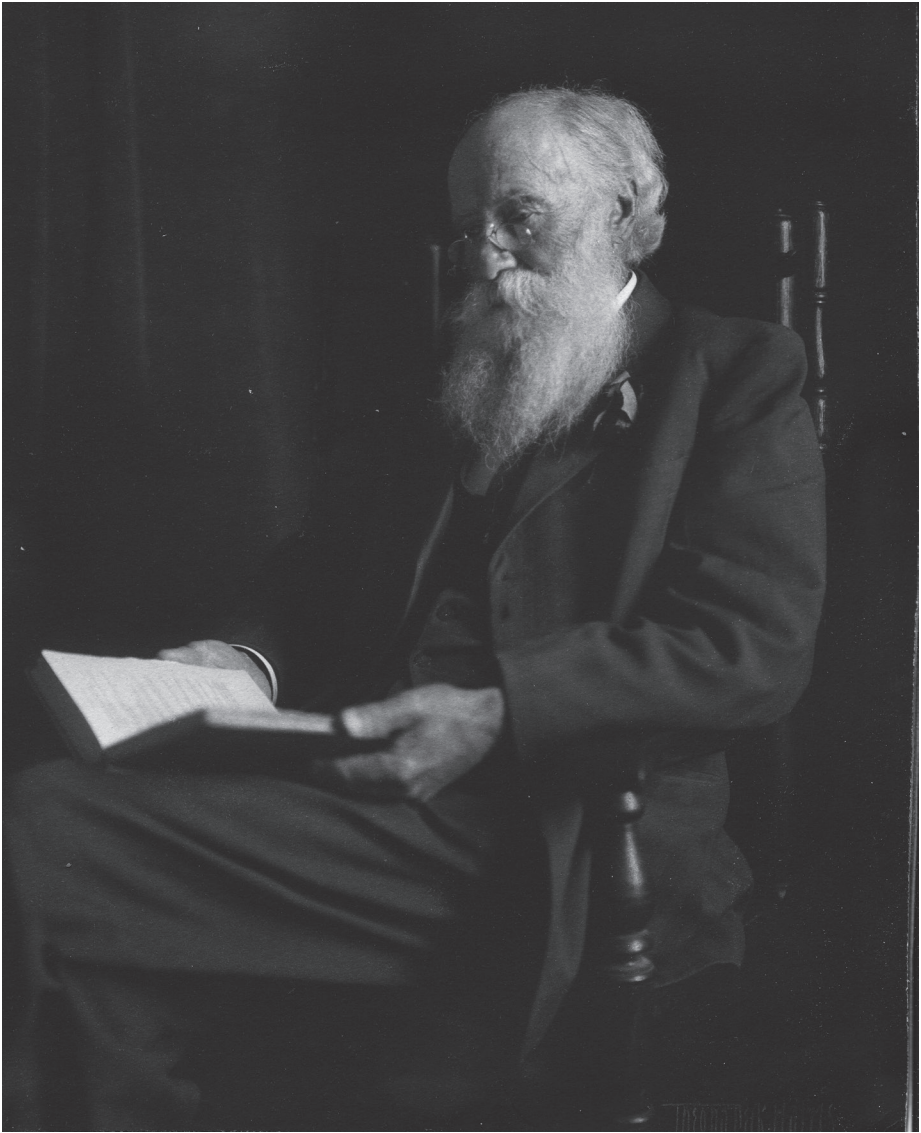
**News & Updates**  
February, 2008  
Whitman Archive nears to fundraising goal of \$1.5 million for challenge grant. [Help us meet the challenge.](#)

December, 2007  
Whitman Archive adds [sixty-eight new reviews](#) of Whitman's work.

August, 2006  
Integrated finding guide to Whitman's poetry manuscripts is [hosted with the C.F.W. Coker Award.](#)

© 1995-2008 Walt Whitman Archive. Ed Folsom & Kenneth Price, editors.  
The Walt Whitman Archive is freely distributed by the Center for Digital Research in the Humanities at the University of Nebraska-Lincoln.

Funding and support provided by the National Endowment for the Humanities, the US Department of Education, the Institute of Museum and Library Services, University of Iowa, University of Nebraska-Lincoln, and the Institute for Advanced Technology in the Humanities at the University of Virginia.



A photograph by Theona Peck Harris of “John Burroughs reading *Leaves of Grass* by Whitman” (so inscribed on the back of the photo). Burroughs (1836-1917) was Whitman’s close friend and disciple as well as one of America’s great nature writers. In this photo, he appears to be reading the 1892 “Deathbed edition” of *Leaves*, open to “*Song of the Open Road*,” pp. 124-125. Harris’s photograph was the basis for the frontispiece in Clara Barrus’s *Our Friend John Burroughs* (1914). The photo, along with two others of Burroughs reading *Leaves*, is part of the Glenn Schaeffer Walt Whitman Collection, University of Iowa Libraries Special Collections.