

SUBSCRIPTION INFORMATION

Please address all subscription correspondence to:

Walt Whitman Quarterly Review
P.O. Box 0567
Selmer, TN 38375-0567

Subscription customer service: wwqr@magcs.com

Website for subscription: <http://wwqr.magcs.com/subscribe>

Website for renewals: <http://wwqr.magcs.com/renew>

TO SUBSCRIBE

Name _____

Address _____

City _____

State _____ ZIP _____

- \$35.00 per year individuals / \$45.00 per year institutions
- Add \$10 postage surcharge outside the US
- Payment in US dollars only
- Multiple-year subscriptions accepted
- To pay by credit card, call 1-888-400-4961

CHANGE OF ADDRESS

Former Address: (Please include a mailing label if available)

Name _____

Address _____

City _____

State _____ ZIP _____

New Address

Address _____

City _____

State _____ ZIP _____

GUIDELINES FOR CONTRIBUTORS

GENERAL CONSIDERATIONS OF STYLE

Essays: Place the title two inches below the top of the page, the author's name two inches below the title, and the text two inches below the author's name. The affiliation of the contributor follows the essay.

Notes, Book Reviews, Bibliographies: These are configured like essays, except the author's name follows the work.

References: Follow *The MLA Style Sheet*, Second Edition. Mark references in the text with raised footnote numbers, not author-year citations in parentheses. Double-spaced endnotes should follow the essay on a new page headed "Notes." Do not use Latin abbreviations for repeated citations. Do not condense the names of publishers or titles. Make references complete so that a bibliography is unnecessary. When citing journal articles, give the volume number of the journal followed by the issue date in parentheses, followed by a comma, followed by the page number(s)—e.g., Joann P. Krieg, "Whitman and Modern Dance," *Walt Whitman Quarterly Review* 24 (Spring 2007), 208-209.

QUOTING AND CITING WALT WHITMAN'S WRITING

When quoting from individual editions of *Leaves of Grass* (the 1855, 1856, 1860, 1867, 1870-1871, 1881), please use the facsimiles available on *The Walt Whitman Archive* (www.whitmanarchive.org), and cite the edition, date, and page numbers, followed by "Available on the *Walt Whitman Archive* (www.whitmanarchive.org)." Do not list the URL of individual page images or the date accessed.

The standard edition of Whitman's work is *The Collected Writings of Walt Whitman*, twenty-two volumes published by the New York University Press under the general editorship of Gay Wilson Allen and Sculley Bradley, and supplemented with volumes published by the University of Iowa Press and Peter Lang. Citations and quotations from Whitman's writings should be keyed to the specific volumes in this edition whenever possible. The Library of America edition of Whitman's *Poetry and Prose* is also acceptable.

After the initial citation, contributors should abbreviate the titles of the *Collected Writings* in the endnotes as follows:

<i>LG</i>	<i>Leaves of Grass</i> , Comprehensive Reader's Edition, edited by Harold W. Blodgett and Sculley Bradley (1965).
<i>LGVar.</i>	<i>Leaves of Grass: A Textual Variorum of the Printed Poems</i> , edited by Sculley Bradley, Harold W. Blodgett, Arthur Golden, William White. 3 vols. (1980).
<i>EPF</i>	<i>The Early Poems and Fiction</i> , edited by Thomas L. Brasher (1963)
<i>PW</i>	<i>Prose Works 1892</i> , edited by Floyd Stovall. Vol. 1: <i>Specimen Days</i> (1963); Vol. 2: <i>Collect and Other Prose</i> (1964).
<i>Corr</i>	<i>The Correspondence</i> , edited by Edwin Haviland Miller. Vol. 1: 1842-1867 (1961); Vol. 2: 1868-1875 (1961); Vol. 3: 1876-1885 (1964); Vol. 4: 1886-1889 (1969); Vol. 5: 1890-1892 (1969); Vol. 6: A Supplement with a Composite Index (1977); Vol. 7, edited by Ted Genoways (2004).
<i>DBN</i>	<i>Daybooks and Notebooks</i> , edited by William White. 3 vols. (1978).

- NUPM* *Notebooks and Unpublished Prose Manuscripts*, edited by Edward F. Grier. 6 vols. (1984).
- Journ* *The Journalism*, edited by Herbert Bergmann, Douglas A. Noverr, and Edward J. Recchia. Vol. 1: 1834-1846 (1998); Vol. 2: 1846-1848 (2003).

PROCEDURES FOR SUBMITTING WORK

To submit original work, please visit the WWQR website at: <http://ir.uiowa.edu/wwqr>.

Address all correspondence to Editor, *Walt Whitman Quarterly Review*, The University of Iowa, 308 English Philosophy Bldg., Iowa City, IA, 52242-1492. Our telephone number is (319)335-0592. Contributors whose work is published will receive two complimentary copies of *WWQR*.

ORDERING BACK ISSUES

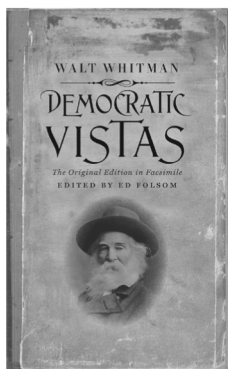
Almost all back issues are available for purchase. Single issues are \$6.00 and double issues are \$12.00 (including shipping charges). When ordering please specify the volume number, issue number, and year of publication for each issue you would like to purchase. Make checks payable to *Walt Whitman Quarterly Review* and mail your order to: Walt Whitman Quarterly Review, Department of English, The University of Iowa, 308 English-Philosophy Bldg., Iowa City, IA, 52242-1492.

The following issues are *not* available for purchase: 4:2/3 (Fall/Winter 1986/1987); 5:4 (Spring 1988); 12:1 (Summer 1994); 13 1/2 (Summer/Fall 1995); 16 3/4 (Winter/Spring 1999).

THE IOWA WHITMAN SERIES

Ed Folsom, series editor

New & Recent Titles



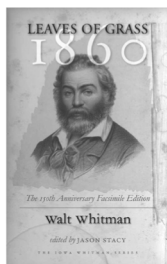
Democratic Vistas

The Original Edition in Facsimile

by Walt Whitman · edited by Ed Folsom

“By an extraordinary feat of scholarship and interpretation, Ed Folsom’s new edition of *Democratic Vistas* presents this difficult work, troubled yet ecstatic, as something of great significance to our own times. With its historical notes and annotated bibliography and the important new scholarship in the introduction, this edition offers both context and tools for analytical interpretation.”—Alan Trachtenberg, Yale University

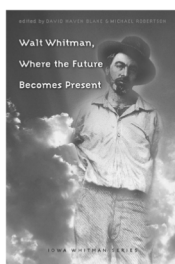
214 PAGES · \$24.95 PAPERBACK



Leaves of Grass, 1860: *The 150th Anniversary Facsimile Edition*

by Walt Whitman · edited by Jason Stacy

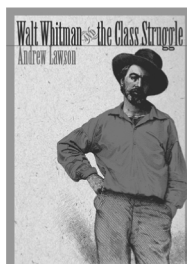
550 PAGES · \$24.95 PAPERBACK



Walt Whitman, *Where the Future Becomes Present*

edited by David Haven Blake & Michael Robertson

200 PAGES · 12 PHOTOS · \$39.95 HARDCOVER



Walt Whitman & the Class Struggle · by Andrew Lawson

186 PAGES · 2 PHOTOS · \$29.95 HARDCOVER

IOWA *where great writing begins*
UNIVERSITY OF IOWA PRESS

www.uiowapress.org · order toll free 800.621.2736

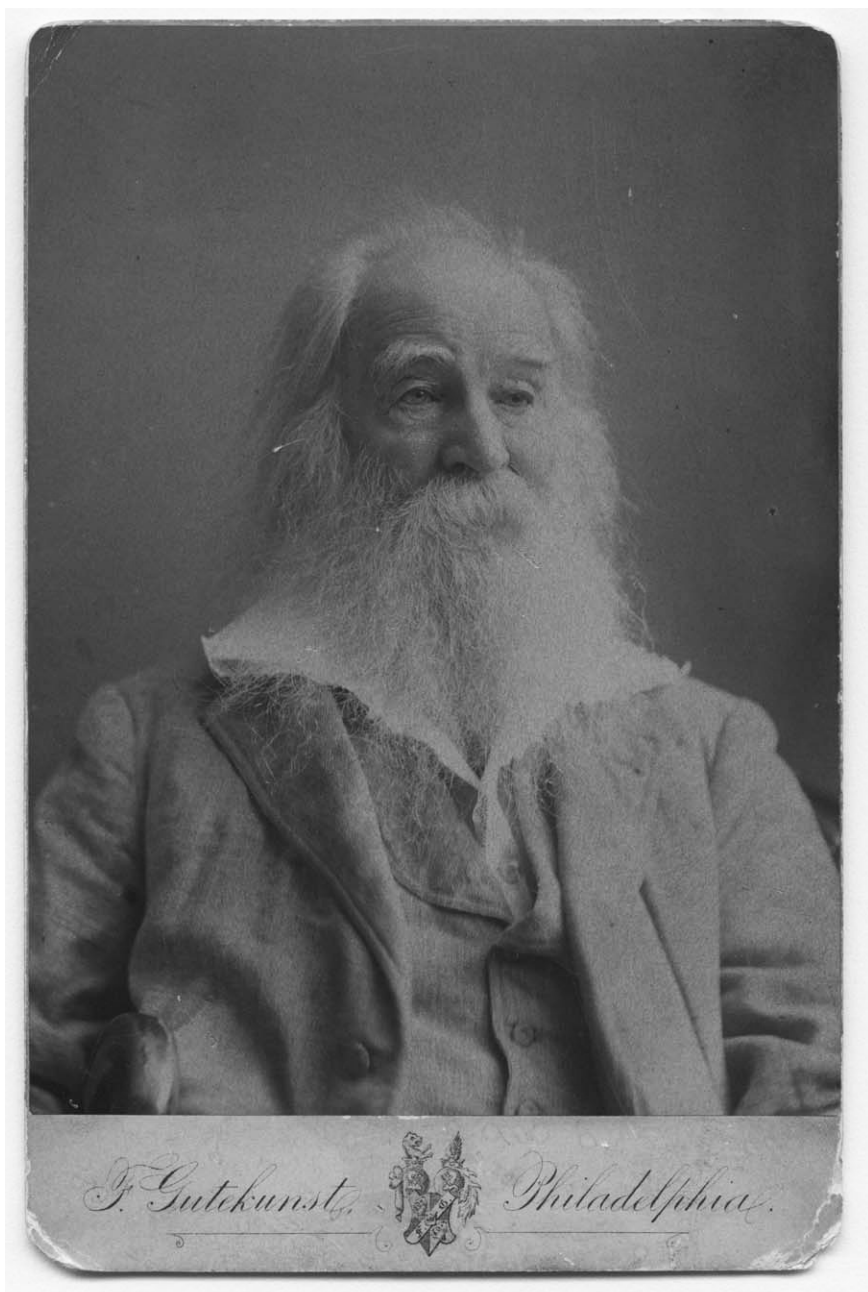
Great News!

The University of Nebraska-Lincoln has been offered a \$500,000 "We the People" NEH challenge grant to support the building of a permanent endowment for the *Walt Whitman Archive*. The grant carries a 3 to 1 matching requirement, and thus we need to raise \$1.5 million dollars in order to receive the NEH funds.

To raise \$1.5 million dollars is a huge task but it is for a remarkably important cause: to make freely available all of the writings of the great poet of democracy.

Big accomplishments are achieved through a series of small steps. Please add your name to the list of supporters of the *Whitman Archive*. Visit www.whitmanarchive.org to make your gift.

The image is a composite graphic. On the right side, there is a full-length black and white photograph of Walt Whitman, standing with his arms crossed, wearing a dark suit and a white shirt with a cravat. On the left side, there is a screenshot of a web browser displaying the homepage of 'The Walt Whitman Archive'. The browser's address bar shows 'http://www.whitmanarchive.org/'. The website has a dark background with white text. A navigation menu on the left lists several categories: 'Published Works', 'Manuscripts', 'Biography & Correspondence', 'Criticism', 'Pictures & Sound', 'Resources', and 'About the Archive'. The main content area features a large, close-up portrait of Whitman's face. Below the portrait, there is a 'News & Updates' section with several news items, including one from February 2008 about a fundraising goal, one from December 2007 about new reviews, and one from August 2006 about a finding guide. At the bottom of the screenshot, there is a copyright notice and a list of funding sources.



Previously Unknown Photograph of Whitman, taken in Philadelphia, August 1889, by Frederick Gutekunst. Collection of Lance Hidy. See pp. 153-159.