

★ PLANTS AND BRANCHES IN THE UNITED STATES

- ABERDEEN, SOUTH DAKOTA
- ARKANSAS CITY, KANSAS
- CHICAGO, ILLINOIS
- CINCINNATI, OHIO
- DES MOINES, IOWA
- DULUTH, MINNESOTA
- EAST ST. LOUIS, ILLINOIS
- EL PASO, TEXAS
- ESTHERVILLE, IOWA
- FARGO, NORTH DAKOTA
- KANSAS CITY, KANSAS
- LOS ANGELES, CALIFORNIA
- MADISON, SOUTH DAKOTA
- MEMPHIS, TENNESSEE
- MINNEAPOLIS, MINNESOTA
- MOBILE, ALABAMA
- OAKLAND, CALIFORNIA
- OTTUMWA, IOWA
- PHILADELPHIA, PENNSYLVANIA
- SAN FRANCISCO, CALIFORNIA
- SIoux FALLS, SOUTH DAKOTA
- ST. PAUL, MINNESOTA

PLANTS OVERSEAS:

- BARDNEY, ENGLAND
- LIVERPOOL, ENGLAND
- DUNDEE, SCOTLAND

Morrell in Iowa Today

With four plants in three Iowa cities, John Morrell & Co. continued to play an important part in the economic life of the State in 1965. A full line slaughtering and processing plant operated in Ottumwa, along with separate beef and hog slaughtering facilities in Estherville. The Feed Division operated plants in Estherville and Des Moines. The Sioux Falls plant also contributed to the company's business in Iowa.

Morrell, one of the State's largest industries, currently employs 3,600 Iowans who, annually, receive wages in excess of \$23,000,000. By far the largest company expenditure is for livestock — last year approximating \$137,000,000. The company's Iowa plants also made purchases from Iowa concerns in excess of \$6,000,000.

Supplementing Morrell's contribution to the State is the participation of its employees in civic and charitable activities. They serve on local, state, and national groups. They express their opinions in politics and many of them have served in elective positions.

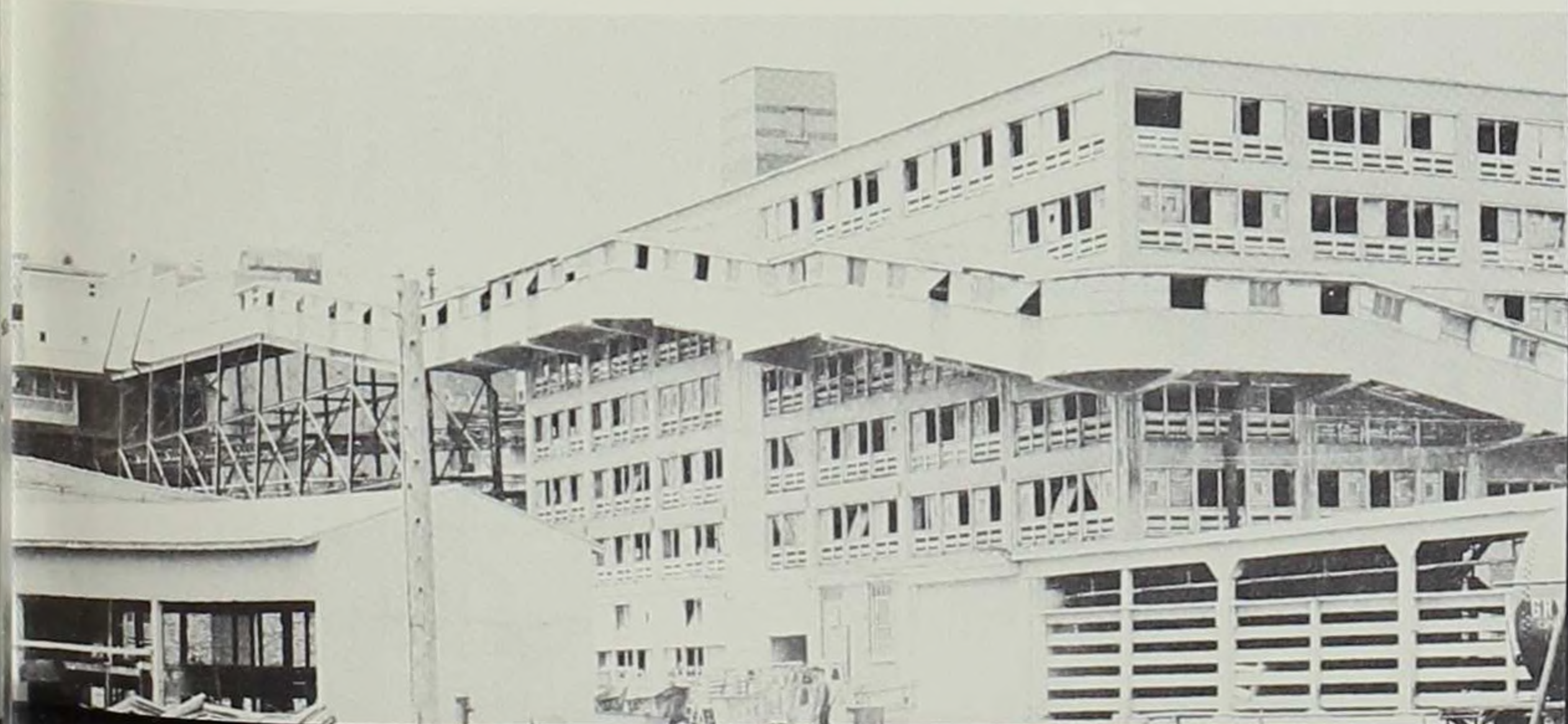
John Morrell & Co. and its employees have been good Iowans in the past and will be in the future.

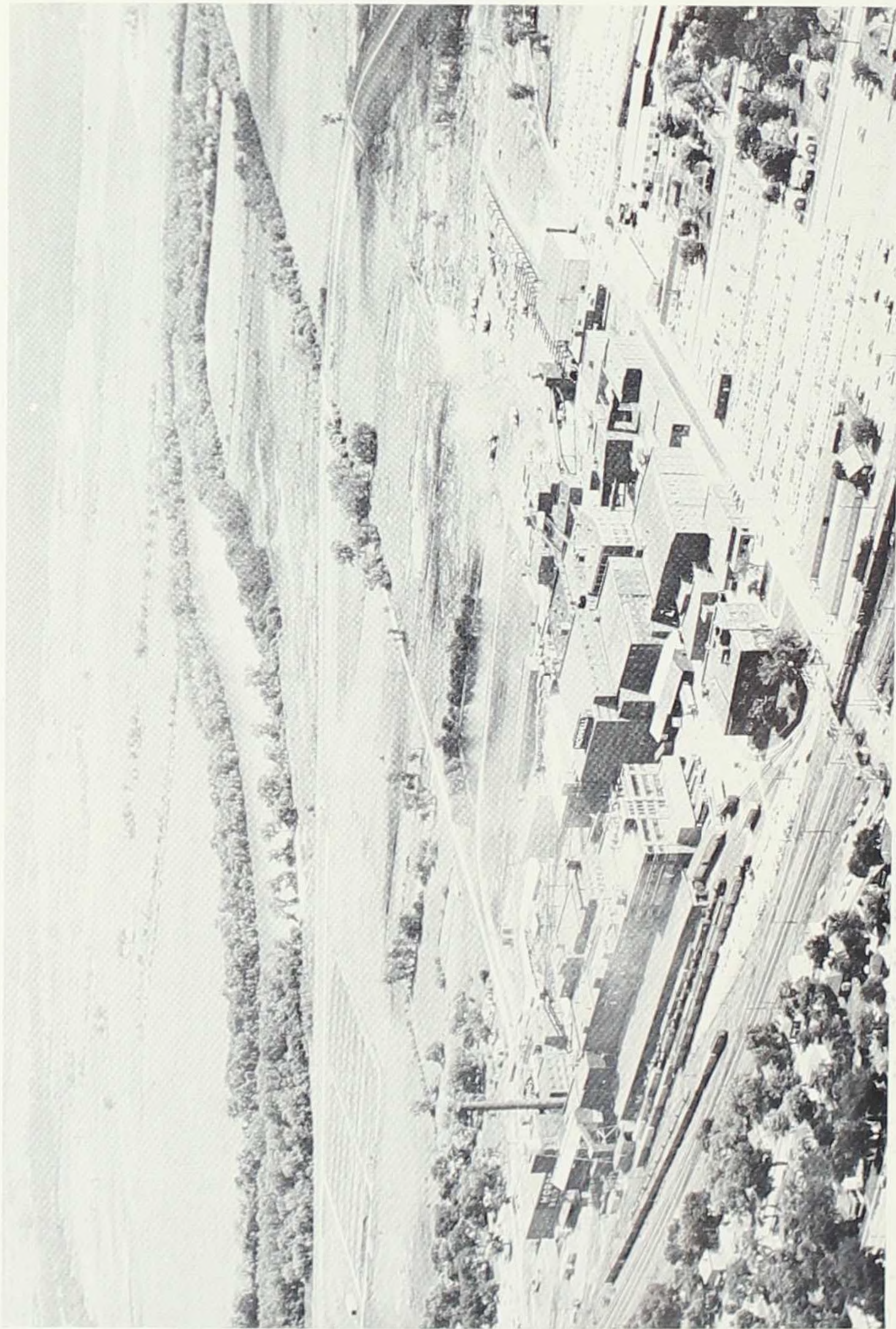
L. O. CHEEVER



Virg Kleespies holds an old advertising piece from his collection. Back of him are current point-of-purchase materials used in promoting the sale of Morrell products in markets throughout the country.

Ottumwa's hog hotel receives the porkers brought in and sold to Morrell buyers by farmers and livestock dealers. The hogs are penned here until driven up the ramp, running from the ground floor to the top of the building on the left. From that point they begin the journey leading to America's dinner tables.





The Ottumwa plant of John Morrell & Co. The Des Moines River curves around the plant in the background.