

## An Amana Album

The photos on the following pages as well as many of those seen earlier in this issue are from a collection of pictures taken by Bertha M. Horack Shambaugh. Even today, Bertha Shambaugh remains one of the principal authorities on the Community of True Inspiration. She published her first article on the Amanas in 1896 in *Midland Monthly*; in 1908, her book *Amana — The Community of True Inspiration* appeared. Following the changes in the structure of the community, the book was republished in an updated version in 1932 as *The Amana That Was — Amana That Is*.

Living to some extent in the shadow of her husband Benjamin Shambaugh, Superintendent of the State Historical Society and head of the Political Science Department at The University of Iowa for many years, Bertha Shambaugh was not only an author, but a skilled artist and photographer as well. Throughout the 1890s and the first decades of this century Mrs. Shambaugh photographed the villages and people of Amana. She also apparently gave illustrated lectures on the Amanas. In 1975, a set of glass lantern slides was discovered among unprocessed material at the State Historical Society. Subsequently, glass negatives of the same images were found — and some additional pictures not included in the slide collection.

Most of the pictures in the Shambaugh Amana collection are not well known, although a few (notably “The Knitting Lesson”) have been widely published.



Bertha M. Horack Shambaugh, dressed in an Amana costume (Shambaugh Collection).

Most of the photos in this issue, including many hand-colored versions of black and white photos, have never before been published in *The Palimpsest*. Prints were made from Bertha Shambaugh's original glass negatives by Robert A. Ryan of Iowa City.

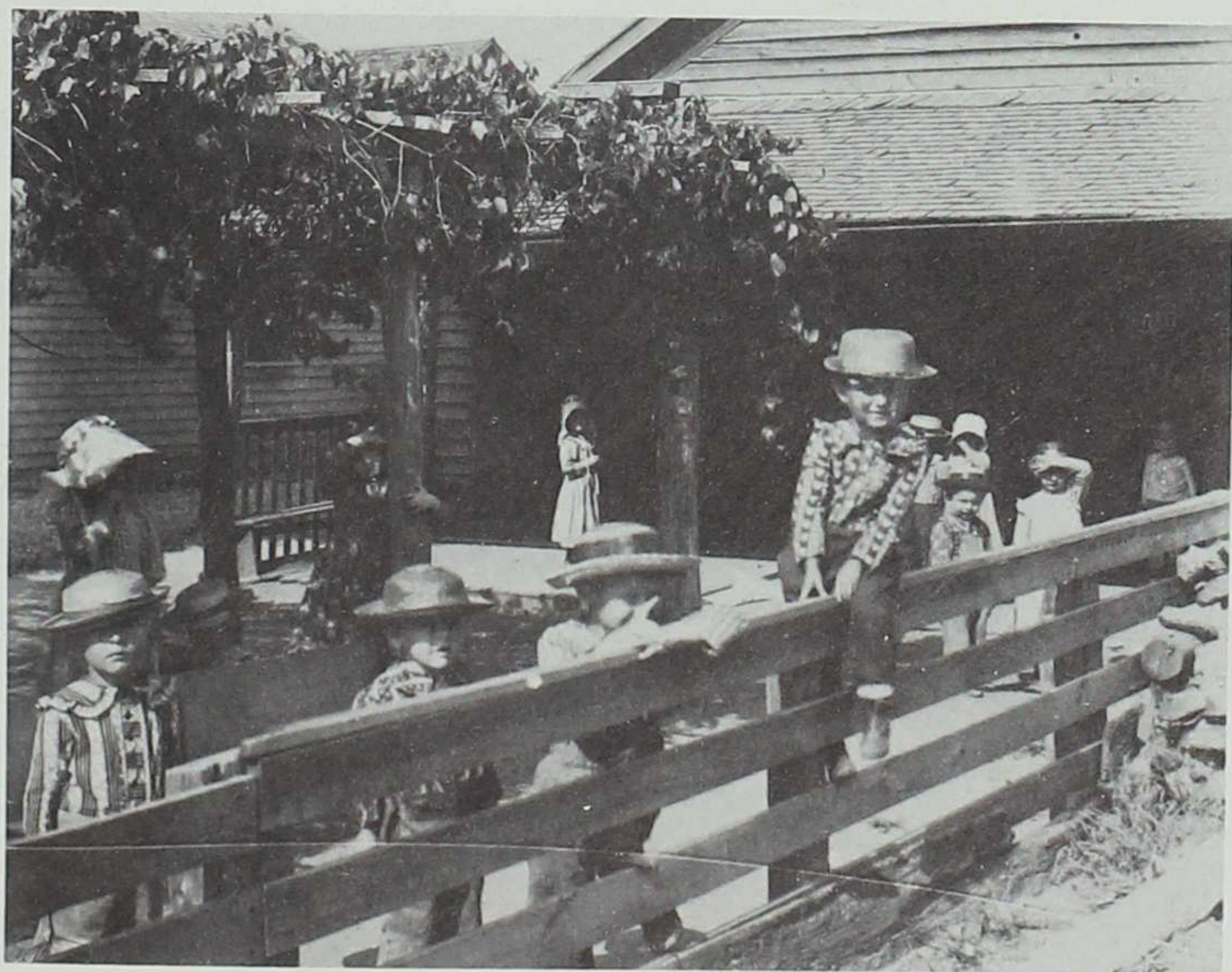
Mary Bennett

(Ms. Bennett is a work-study assistant in the Society's Photograph Collection.)



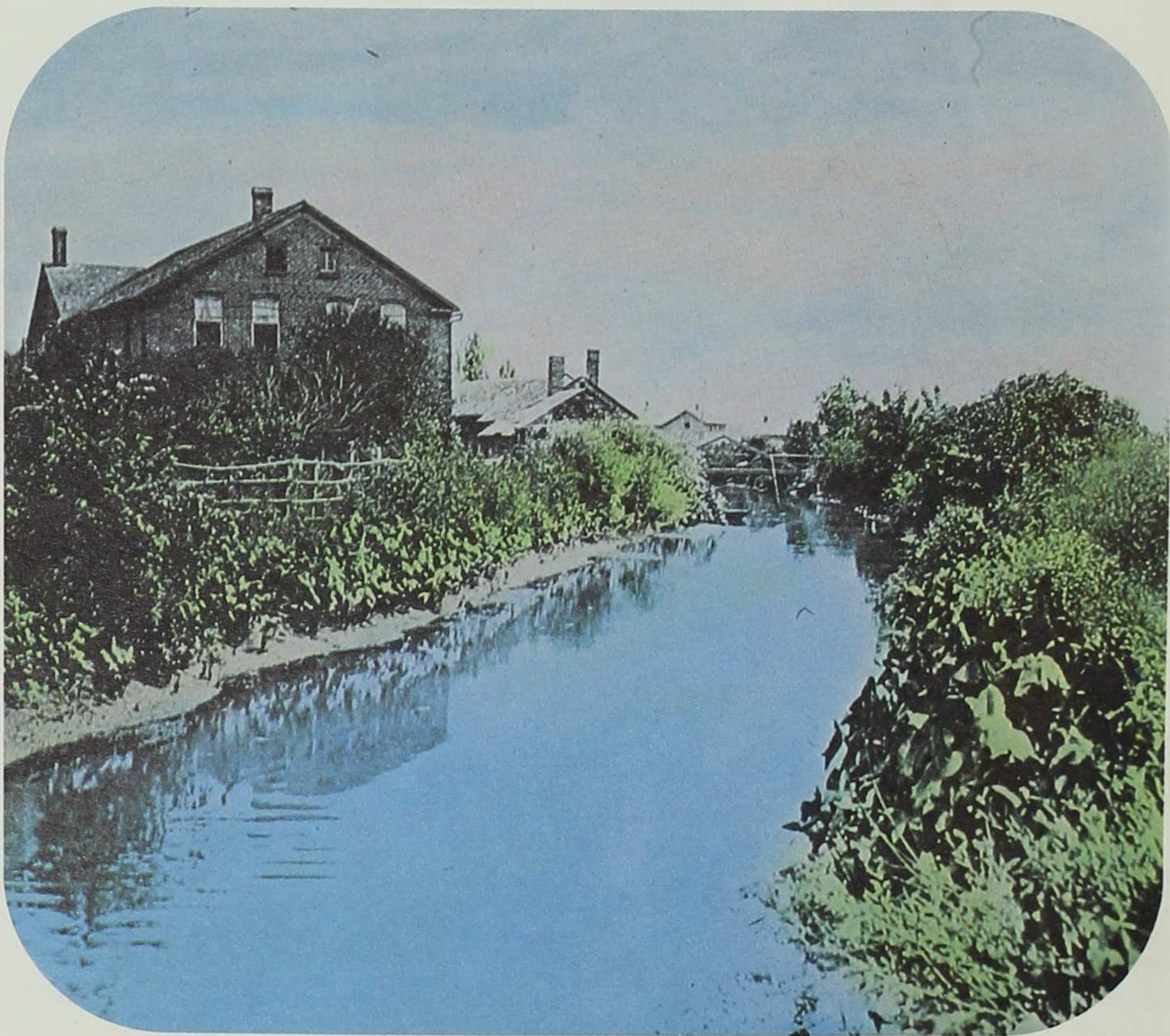


*One of Bertha Shambaugh's most famous photos, "The Knitting Lesson" (Shambaugh Collection).*



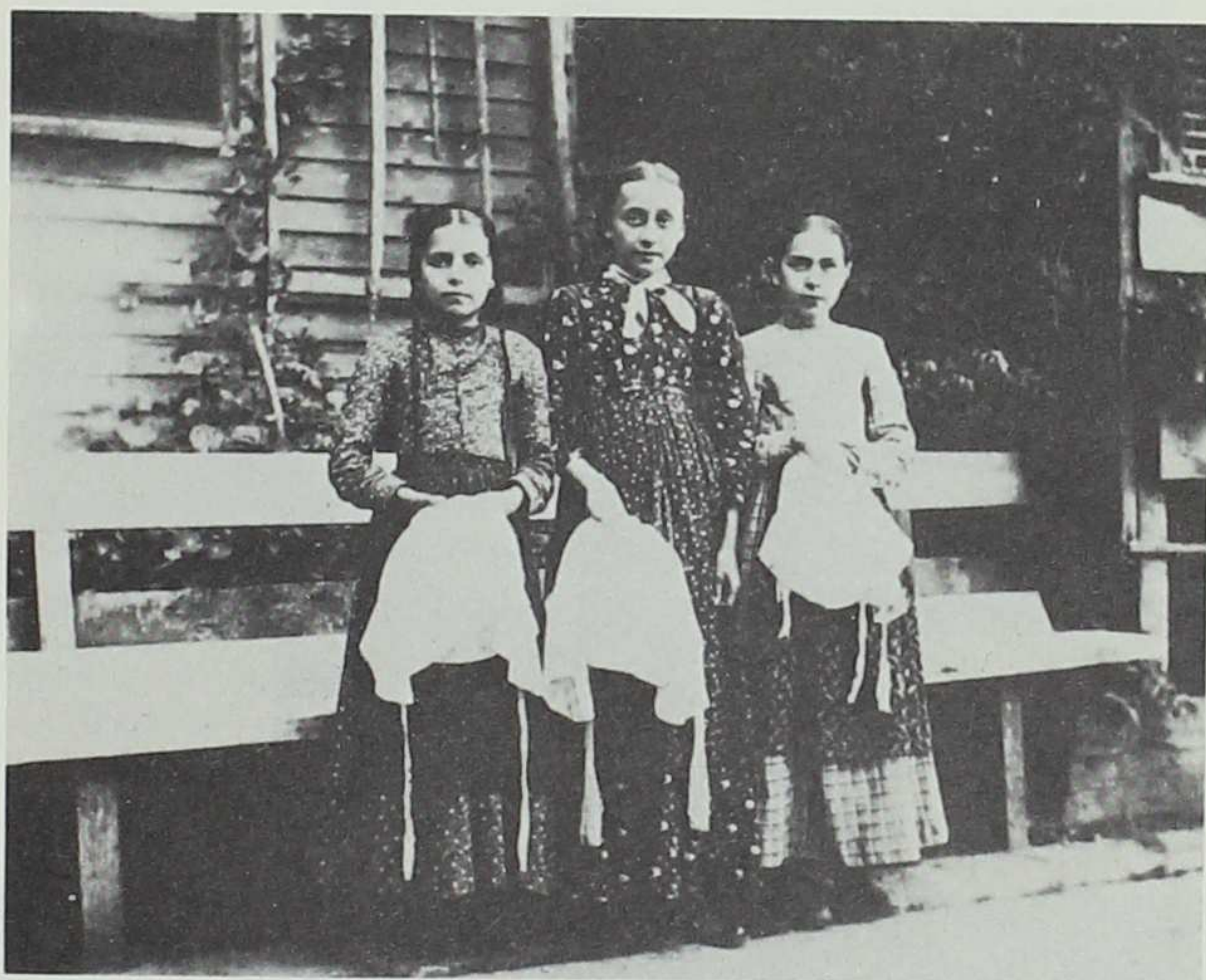
*A village Kinderschule (children's school) in the 1890s (Shambaugh Collection).*



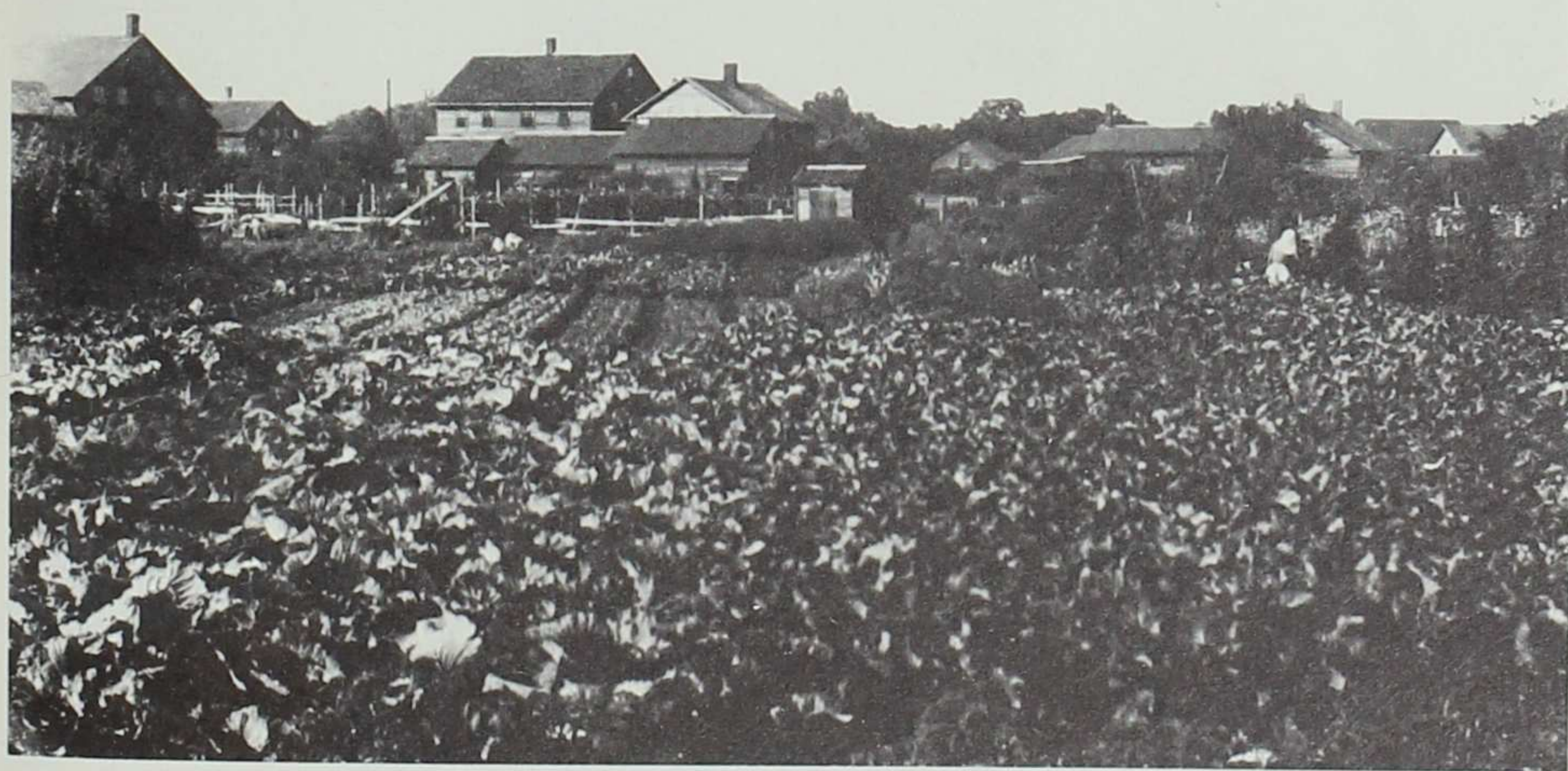


*The millrace in Amana (Shambaugh Collection).*





*(Shambaugh Collection).*



*Amana gardens (Shambaugh Collection).*



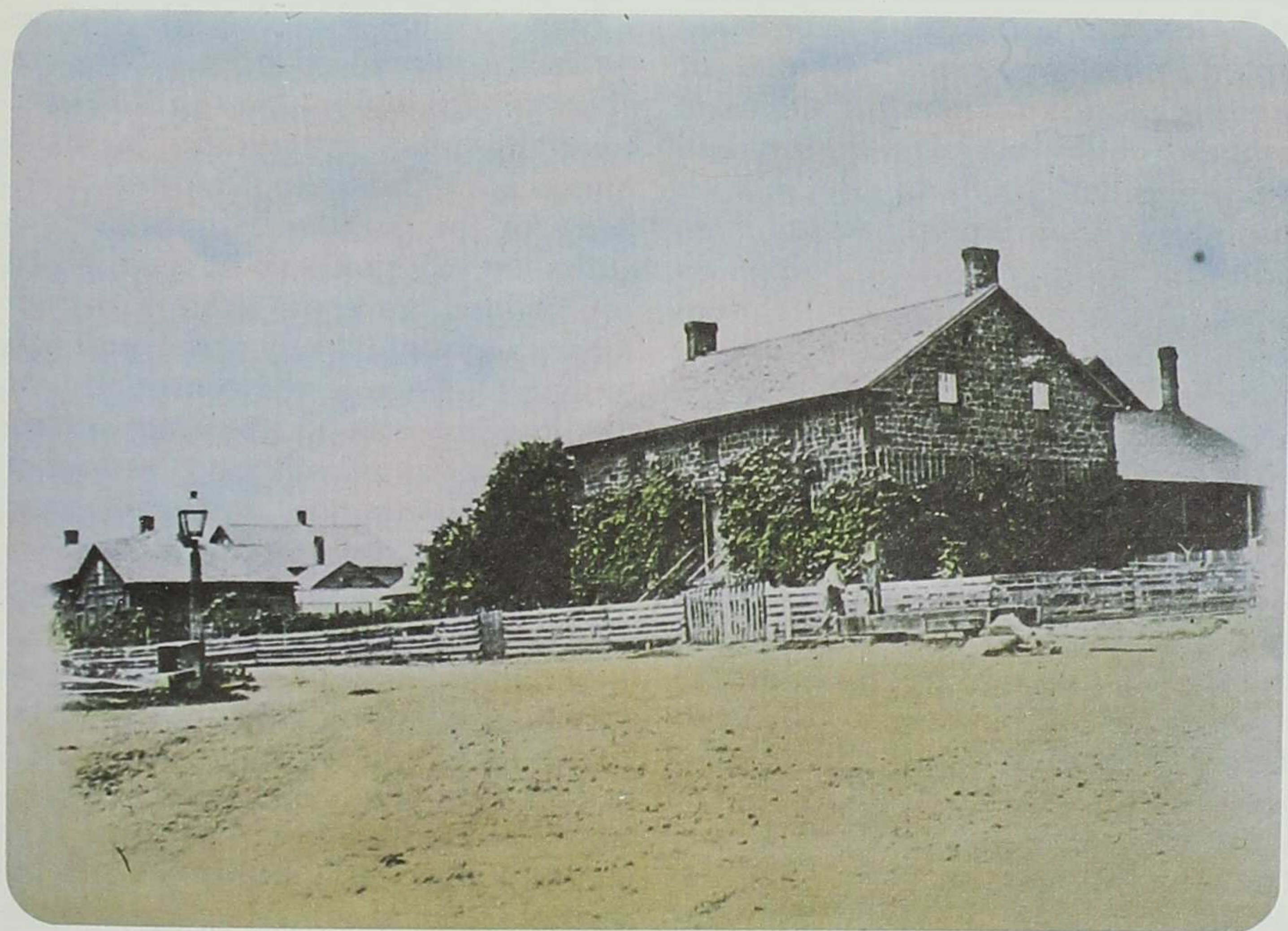


*A young girl, Homestead (Sham-  
baugh Collection).*





*Making kraut at the communal kitchen house (Shambaugh Collection).*



*(Shambaugh Collection)*