

NEWSLETTER

OCTOBER 1972

NUMBER 66

MESSAGE FROM THE PRESIDENT

WE WERE ALL PLEASED WHEN COPIES OF VOLUME 17 OF THE JOURNAL ARRIVED IN THE MAIL A FEW WEEKS AGO. DALE HENNING, EDITOR, IS TO BE CONGRATULATED FOR HIS EFFORTS. THE EXTREMELY IMPORTANT FUNCTION OF PUBLICATION HAS PLAGUED THE SOCIETY FOR SEVERAL YEARS. OUR MEMBER, PARTICULARLY OUR INSTITUTIONAL MEMBERS, HAVE BEEN VERY TOLERANT OF US AND FOR THAT WE ARE MOST APPRECIATIVE.



THE SOCIETY OPERATES UNDER MANY HANDICAPS, BUT HAS NEVER FAILED TO PRODUCE. WE HOPE THAT THIS PUBLICATION WILL BE TAKEN AS AN ACT OF GOOD FAITH ON OUR PART. DR. HENNING INFORMS ME THAT ANOTHER JOURNAL IS NOW IN PRESS (WARTBURG SYMPOSIUM PAPERS) AND THAT IT SHOULD BE DISTRIBUTED SOMETIME NEXT MONTH. HE HAS ADDITIONAL MATERIAL AND WE ARE ACTIVELY SOLICITING MORE. WE ARE STILL TWO YEARS BEHIND, BUT I RATHER EXPECT THE GAP TO BE CLOSED BY THE TIME OF THE ANNUAL MEETING NEXT APRIL.

ANOTHER ITEM OF BUSINESS I HAVE TO REPORT CONCERNS THE PRESERVATIONS COMMITTEE HEADED BY DON SPEARS. DON IS CALLING A MEETING OF HIS PEOPLE TO BE HELD ON OCTOBER 22 IN AMES. AN ATTEMPT WILL BE MADE TO DEFINE THE ROLE OF THE SOCIETY IN THIS REGARD AND TO OUTLINE AREAS WHERE WE CAN COOPERATE WITH ADRIAN ANDERSON, STATE LIAISON OFFICER. WE EXPECT FORWARD PROGRESS TO BE MADE AND HOPE TO HAVE A REPORT ON THE MEETING FOR THE NEXT ISSUE OF THE NEWSLETTER.

AFTER CONSULTING WITH JOE BEALS, OUR VICE PRESIDENT, AND RUTH THORNTON, OUR SECRETARY-TREASURER, I HAVE DECIDED NOT TO HOLD A MEETING OF THE TRUSTEES THIS FALL. WE FELT THAT SUCH A MEETING IS UNNECESSARY IN VIEW OF THE FACT THAT OUR TWO BIGGEST PROBLEMS (THE JOURNAL AND THE MATTER OF PRESERVATION) HAVE LARGELY TAKEN CARE OF THEMSELVES. PRIOR TO ISSUING THIS MESSAGE, I DID SEND A MEMO TO TRUSTEES IN WHICH SOME OTHER MINOR MATTERS WERE CONSIDERED.

I WOULD LIKE FOR CHAPTER LEADERS NOT TO FORGET TO KEEP GARY AND BETSY VALEN INFORMED AS TO YOUR RECENT CHAPTER AND INDIVIDUAL FINDS AND ACTIVITIES. IT IS IMPORTANT THAT WHAT YOU DO IS RECORDED IN SOME WAY. ALSO, IF YOU HAVE NOT PAID YOUR DUES, YOU CAN SAVE MRS. THORNTON SOME WORK AND THE SOCIETY SOME POSTAGE IF YOU WILL REMIT ON YOUR OWN. WHILE YOU ARE AT IT, SIGN UP ONE OF YOUR FRIENDS OR SEND ME THEIR NAMES AND I WILL FORWARD SOME PROPAGANDA. BEST TO ALL OF YOU.

DUANE ANDERSON
PRESIDENT, IAS

Handwritten signature: Duane Anderson

EDITOR'S NOTE

EXPERIENCED EDITORS MUST HAVE SIGNS PAINTED OVER THEIR DESKS WHICH READ: NEVER MAKE PROMISES! TUCKED AWAY IN THE BACK PAGES OF THE LAST ISSUE A PROMISE WAS MADE TO DISCUSS PRESERVATION IN THE FALL NEWSLETTER. IT DIDN'T HAPPEN. WE HAVE AN ARTICLE ON THE THREATENED SITES IN HARDIN COUNTY, BUT ADDITIONAL INFORMATION WILL HAVE TO COME OUT IN FUTURE ISSUES. THERE SEEMS TO BE LITTLE QUESTION THAT AN IMPORTANT FUNCTION OF THE IOWA ARCHEOLOGICAL SOCIETY IS TO PRESERVE AND RECORD ARCHEOLOGICAL MATERIAL IN THE STATE. IN READING PAST ISSUES OF THE NEWSLETTER IT IS OBVIOUS THAT A MAJOR CONCERN OF PROFESSIONAL AND AMATEUR ARCHEOLOGISTS HAS BEEN THE IDENTIFICATION AND PRESERVATION OF BOTH SITES AND ARTIFACTS RELATED TO IOWA'S PAST. MEMBERS OF THE SOCIETY HAVE OFTEN EXPRESSED THE NEED FOR A STRONG WORKING RELATIONSHIP BETWEEN THE LOCAL COLLECTOR AND THE PROFESSIONAL. THIS IS ESPECIALLY IMPORTANT IN THE AREA OF PRESERVATION. THE COLLECTOR HAS THE TIME AND INTEREST TO LOCATE SITES AND ARTIFACTS WHILE THE PROFESSIONAL CAN PROVIDE THE INFORMATION NECESSARY TO INTERPRET AND UNDERSTAND THE DISCOVERIES. THIS MUST BE DONE IN A SCIENTIFIC AND ORDERLY MANNER. THE SOCIETY SHOULD WORK OUT SPECIFIC PROCEDURES TO BRING ABOUT STATE WIDE IDENTIFICATION, RECORDING, AND PRESERVATION OF ALL LOCATIONS AND MATERIAL WHICH ARE SIGNIFICANT TO THE RECORD OF MAN'S PREVIOUS INHABITANCE OF THE STATE. WHEN THE LOCAL COLLECTOR FINDS A SITE, THERE SHOULD BE AN EASY WAY FOR HIM TO REPORT THIS TO THE PROPER AUTHORITIES. SUCH INFORMATION WOULD BE KEPT CONFIDENTIAL FOR OBVIOUS REASONS. IN ADDITION, SIGNIFICANT DIAGNOSTIC MATERIAL SUCH AS POTTERY, PROJECTILE POINTS, OR UNUSUAL ARTIFACTS SHOULD NOT SIMPLY MOVE FROM THE GROUND TO A SHOE BOX. RECORDS SHOULD BE KEPT AND MADE AVAILABLE TO THE PEOPLE WHO ARE QUALIFIED TO INTERPRET THE ARCHEOLOGICAL AND ANTHROPOLOGICAL SIGNIFICANCE OF THE DISCOVERY. EVEN IF THE AVAILABLE FUNDS AND MANPOWER DO NOT ALLOW A COMPLETE PROFESSIONAL INVESTIGATION OF ALL SUCH RECORDS, THE LOCAL COLLECTIONS CAN BE A USEFUL TOOL FOR FUTURE RESEARCH IF THEY ARE PROPERLY MAINTAINED. THESE MATTERS ARE UNDER STUDY AT THE PRESENT TIME BY THE SOCIETY'S PRESERVATION COMMITTEE AND THE ARCHEOLOGISTS IN THE STATE. I HAVE TAKEN THE LIBERTY (OR HAD THE AUDACITY) TO MAKE A FEW SUGGESTIONS WHICH ARE PRINTED HERE ONLY BECAUSE I CONTROL THE CONTENT OF THE PUBLICATION. (AND I WOULD BE HAPPY TO PRINT YOUR OPINIONS IF YOU WOULD SEND THEM TO ME) 1. WE SHOULD ESTABLISH AND DISTRIBUTE STANDARDIZED FORMS TO ALL SOCIETY MEMBERS WHICH CAN BE USED TO REPORT SITES, ARTIFACTS, ETC. 2. INFORMATION SHOULD BE PROVIDED THROUGH THE SOCIETY'S PUBLICATIONS AND MEETINGS ON WHAT TO REPORT AND HOW IT SHOULD BE RECORDED. 3. WE SHOULD WORK FOR LEGISLATION WHICH WILL PROVIDE ADEQUATE FUNDS AND INCENTIVE TO PRESERVE THE PRECIOUS HERITAGE UNCOVERED BY IOWA ARCHEOLOGY. 4. AN EDUCATION PROGRAM SHOULD BE DEvised THROUGH THE USE OF PRESERVED SITES AND MATERIAL TO INSURE PRESENT AND FUTURE APPRECIATION FOR MAN'S EARLY EXISTENCE IN IOWA. IF YOU HAVE ANY COMMENTS OR SUGGESTIONS, PLEASE WRITE!

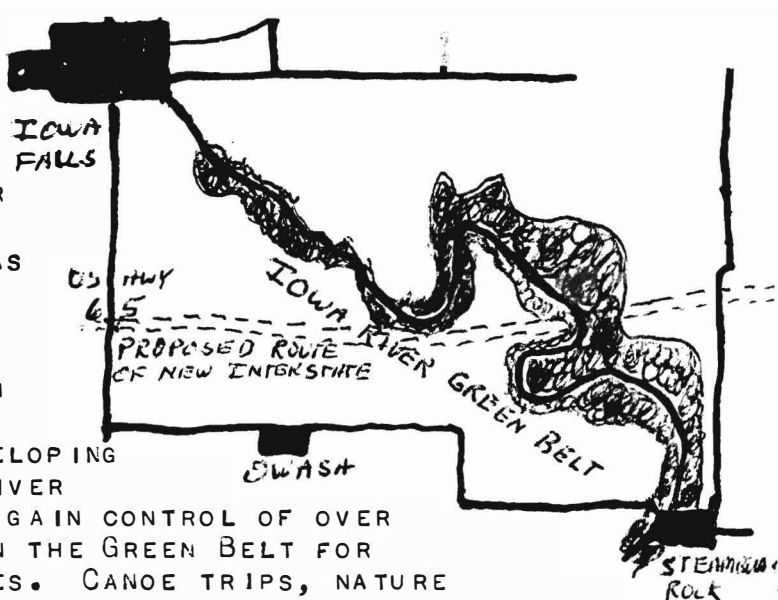
WE HAVE HAD SOME EXCELLENT COOPERATION FOR THIS ISSUE AND A SPECIAL THANKS IS EXTENDED TO THOSE WHO WROTE ARTICLES AND LETTERS. WE WOULD LIKE TO HEAR FROM THE REST OF YOU. WOULDN'T IT BE FUN TO SEE YOUR NAME, COLLECTION OR ARTICLE IN A FUTURE ISSUE OF THE NEWSLETTER?

ADDRESS COMMENTS, MATERIAL, ETC. TO:

IOWA ARCHEOLOGICAL SOCIETY
OFFICE OF THE NEWSLETTER EDITOR
GARY AND BETSY VALEN
R. R. 3
INDIANOLA, IOWA 50125

THREATENED SITES IN HARDIN COUNTY

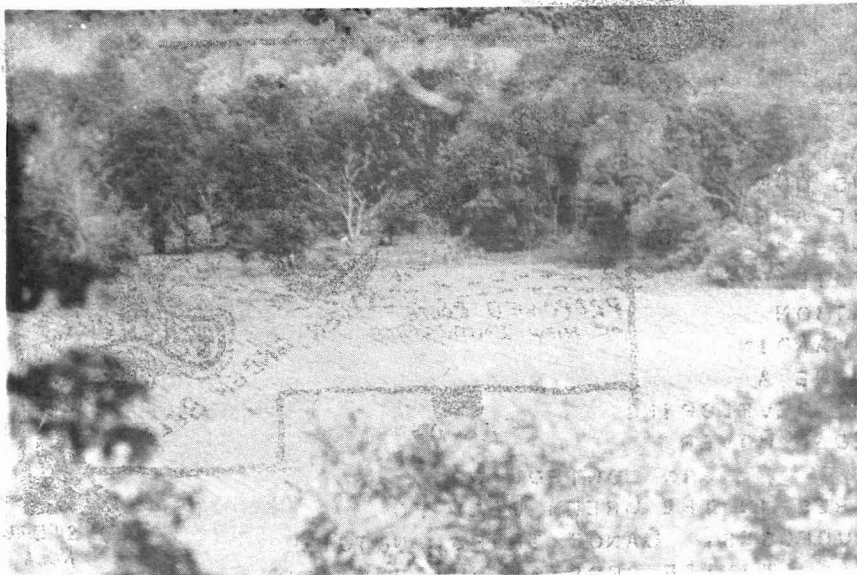
THE 25 MILE SEGMENT OF THE IOWA RIVER BETWEEN IOWA FALLS AND ELDORA IS ONE OF THE MOST BEAUTIFUL AND UNIQUE AREAS IN IOWA. THIS IS ONE OF THE THREE "WILD RIVER" SECTIONS IN THE STATE AND IS IMPORTANT FOR ITS RECREATION AND ECOLOGICAL POTENTIAL. THE HARDIN COUNTY CONSERVATION BOARD HAS DONE A REMARKABLE JOB IN PRESERVING AND DEVELOPING THIS AREA WHICH IS CALLED THE IOWA RIVER GREEN BELT. THE BOARD IS WORKING TO GAIN CONTROL OF OVER 3000 ACRES OF THE TOTAL 8000 ACRES IN THE GREEN BELT FOR CONSERVATION AND RECREATIONAL PURPOSES. CANOE TRIPS, NATURE TRAILS, PICNIC AND CAMPING AREAS, WINTER SPORTS, HUNTING AND FISHING AREAS, AND CONSERVATION EDUCATION HAVE ALL BE INCLUDED IN THE BOARD'S PLANS FOR THE GREEN BELT. SUCH A RIVER AREA IS A NATURAL SETTING TO FIND EVIDENCE OF MAN'S INHABITANCE OF THE STATE PRIOR TO THE SETTLEMENT OF THE WHITE MAN. MOUND GROUPS AND VILLAGE SITES HAVE BEEN IDENTIFIED ALL OVER THE GREEN BELT REGION. AS HAS HAPPENED IN MANY PARTS OF THE STATE, THE AREA IS NOW THREATENED BY THE BULLDOZERS AND EARTH MOVERS. THE HIGHWAY COMMISSION HAS PROPOSED THAT INTERSTATE 520 CUT THROUGH THE HEART OF THE GREEN BELT. THANKS TO THE DEDICATION OF CONSERVATION OFFICER HOMER CALKINS AND THE CONSERVATION BOARD, THE HIGHWAY COMMISSION IS CONSIDERING AN ALTERNATIVE ROUTE WHICH WOULD BYPASS MOST OF THE GREEN BELT REGION. OPPONENTS TO THE ALTERNATIVE PROPOSAL POINT OUT THAT IT IS BETTER TO RUN A HIGHWAY THROUGH "WORTHLESS" TIMBER LAND THAN TO DESTROY FARM FIELDS. CONSERVATION OFFICIALS COUNTER THAT AN INTERSTATE HIGHWAY WILL DISTURB THE WILDLIFE, HAMPER THE RECREATION POTENTIAL, AND DESTROY THE ARCHEOLOGICAL SITES OF THE GREEN BELT. AT LAST REPORT NO DECISIONS HAVE BEEN MADE, BUT THE OUTLOOK SEEMS BRIGHT FOR THE PRESERVATION OF THE AREA. ONE CAN ONLY HOPE THAT SUCH DEDICATION AND GOOD JUDGEMENT WILL PREVAIL WHEN SIMILAR SITES ARE THREATENED IN OTHER PARTS OF THE STATE.



THE MAN WHO IDENTIFIED THE HARDIN COUNTY SITES AND POINTED THESE OUT TO THE CONSERVATION OFFICIALS IS SOCIETY MEMBER JAMES D. REYSACK OF ACKLEY. JIM IS WELL ACQUAINTED WITH THE GREEN BELT AND HE HAS FORMED A THEORY ABOUT ITS PREHISTORIC IMPORTANCE TO IOWA'S FIRST RESIDENTS. THE FOLLOWING ARTICLE REFLECTS HIS VIEWS.

ISLAND ON THE PRAIRIE BY JAMES D. REYSACK

THE MAN STOPPED BRIEFLY TO WATCH AN ELK WITH ITS YOUNG DRINK FROM A SMALL SPRING SEEPING INTO A COLLECTIVE POOL OF CLEAR WATER. AS HE STARTED TO MOVE ON, THE ANIMALS SAW THE MOVEMENT AND SLIPPED INTO A PLUM THICKET BORDERING THE WATERING AREA. THE YOUNG INDIAN CONTINUED TO THE SOUTH AS HE HAD SEVERAL MILES TO GO AND DID NOT WISH TO BE CAUGHT ON THE PRAIRIE IN THE DARKNESS. HE WAS COMPLETING A TRIP FROM AN AREA NOW KNOWN AS WATERLOO-CEDAR FALLS TO AN AREA KNOWN BY THE RED MAN AS "WHERE THE WATER RUNS SWIFTLY", CURRENTLY THE CITY OF IOWA FALLS. HE HAD FOLLOWED THE WEST FORK OF THE CEDAR UNTIL REACHING A BRANCH CALLED MAYNES CREEK BY LATER WHITES, CONTINUED WESTWARD TO NEAR THE PRESENT DAY TOWN OF BRADFORD, THEN HAD TURNED SOUTH FOR THE LAST DOZEN MILES OF PRAIRIE. THE RIVERS AND CREEKS HE HAD FOLLOWED HAD ONLY NARROW RIBBONS OF TIMBER ALONG THE BANKS AND DID NOT OFFER MUCH SHELTER AT ANY TIME OF THE YEAR.

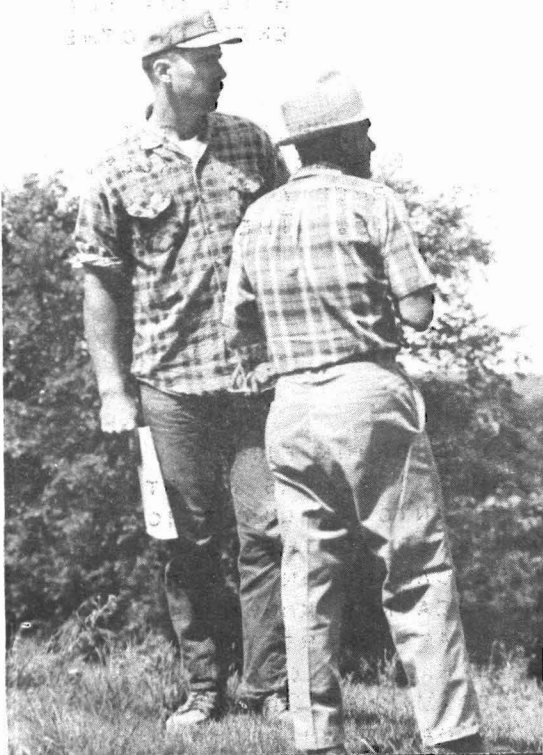


THE ORIGINAL ROUTE OF INTERSTATE 520 WOULD CUT THROUGH THIS VALLEY IN THE HARDIN COUNTY GREEN BELT

SPREAD ALONG THE RIDGES, DEEP RAVINES, AND BOTTOM LANDS COMMON TO THE AREA. THERE WAS AND STILL IS AN ABUNDANCE OF GAME AND THE RIVER HAS CONSIDERABLE NUMBERS OF FISH. TO THE SOUTH, EAST, WEST, AND NORTH THE PRAIRIE STRETCHES FOR MILES WITH ONLY SMALL CLUMPS OF TREES BREAKING THE SEA OF GRASSES. FEW GROVES WERE LARGE ENOUGH FOR SHELTER DURING STORMY WEATHER AND CERTAINLY NOT IN IOWA'S HARSH WINTERS. FOR THIS REASON I FEEL THE AREA OF THE IOWA RIVER BRIEFLY DESCRIBED WAS "AN ISLAND" OF TREES AND SHELTER IN THE PRAIRIE THAT WAS UTILIZED QUITE EXTENSIVELY OVER MANY CENTURIES AND WAS VERY IMPORTANT FOR THE SURVIVAL OF THE RED MAN IN CENTRAL IOWA.

ARTIFACTS FROM THIS AREA RANGE FROM AN OCCASIONAL "PALO-INDIAN" POINT THRU "ONEOTA" WITH ARCHAIC, EARLY AND MIDDLE WOODLAND MATERIAL PREDOMINATING. MOUND GROUPS ARE FAIRLY COMMON AND NEARLY EVERY FARMER HAS "A CIGAR BOX OF ARROWHEADS SOMEWHERE IN THE HOUSE". THE AREA WAS LARGE ENOUGH FOR

WINTER VILLAGES AND EVEN DURING WHITE SETTLEMENT, INDIANS WINTERED SOUTHWEST OF ACKLEY. THERE WAS EVEN THE USUAL UNFOUNDED "INDIAN SCARE" AT ONE TIME. AT PRESENT THIS AREA IS LARGELY UNKNOWN TO PROFESSIONAL ARCHAEOLOGISTS, BUT QUITE A NUMBER OF COLLECTORS "STOMP THE FIELDS". NOW THE HIGHWAY COMMISSION PROPOSES TO CUT A HIGHWAY THRU THE HEART OF "THE ISLAND" AND WILL DESTROY MUCH IN THE WAY OF PREHISTORY THAT CANNOT BE SAVED DUE TO THE INADEQUATE TIME ALLOWED FOR SALVAGE ARCHAEOLOGY. HOPEFULLY AN ALTERNATE ROUTE CAN BE FOUND BUT HELP IS NEEDED TO SAVE OUR "ISLAND."



JIM REYSACK (LEFT) AND HERB SOVEREIGN SURVEY A MOUND GROUP THREATENED BY THE PROPOSED INTERSTATE.

DON SPEARS
AND A
MOUND IN
THE PATH
OF INTER-
STATE 520



INFORMATION NEEDED!!!

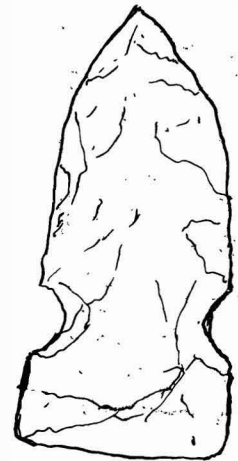
5

THE NEWSLETTER HAS BEEN ASKED TO PUBLISH A REQUEST FOR INFORMATION FROM SOCIETY MEMBERS WHICH WILL PROVIDE DATA FOR A RESEARCH PROJECT BEING CONDUCTED BY SEVERAL ANTHROPOLOGY STUDENTS AT THE UNIVERSITY OF IOWA. HERE IS AN EXCELLENT OPPORTUNITY FOR THE SOCIETY TO DEMONSTRATE ITS DESIRE TO FURTHER THE KNOWLEDGE OF MAN IN PREHISTORIC IOWA. WILL YOU PLEASE TAKE A FEW MINUTES TO ANSWER THESE STUDENTS? THEIR LETTER AND ILLUSTRATIONS INDICATE WHAT THEY NEED.

WE ARE CONDUCTING RESEARCH ON THE DISTRIBUTION PATTERNS OF CERTAIN PROJECTILE POINTS IN THE STATE OF IOWA. WE ARE ESPECIALLY INTERESTED IN THE CLOVIS, SCOTTSBLUFF, TURKEY TAIL, SNYDER, NEBO HILL AND 5-NOTCHED POINT, AND RADDATZ SIDE-NOTCHED.

WE WOULD APPRECIATE IT IF YOUR MEMBERS, LOCAL COLLECTORS, AND AMATEUR ARCHEOLOGISTS WHO HAVE FOUND THESE POINTS OR SEEN THEM IN OTHER COLLECTIONS COULD SEND US INFORMATION REGARDING THEIR LOCATION WHEN FOUND. EXACT LOCATION WOULD BE OF GREAT HELP BUT A MORE GENERAL LOCATION (COUNTY) IS ALL THAT IS REALLY NECESSARY. ANY ADDITIONAL SOURCES OF INFORMATION WOULD BE VERY VALUABLE TO US. PLEASE SEND ANY INFORMATION REGARDING THESE POINTS TO THE ARCHEOLOGY LABORATORY, 129 S. CAPITOL ST., IOWA CITY, IOWA, 52240.

DAVID COOK, LESLIE GARY, JOHN TANDARICH,
MARGARET TOBEY, MIKE WEICHMAN, BARB KASSEBAUM



Raddatz Side Notched

ranges

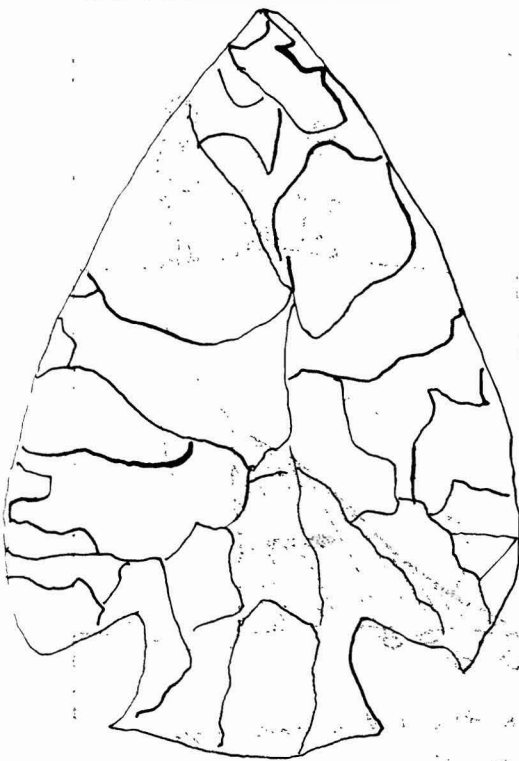
Length 1.3 to 2.2 inches

Width .7 to 1.1

Thickness .2 to .4

Stem length .4 to .7

Width at Notches .6 to .8



SNYDERS

Ranges from 2 inches to 6 inches
in length



Scottsbluff



5-notch point
2 sets of side
notches

1 basal notch
1-2" length
1/2" width

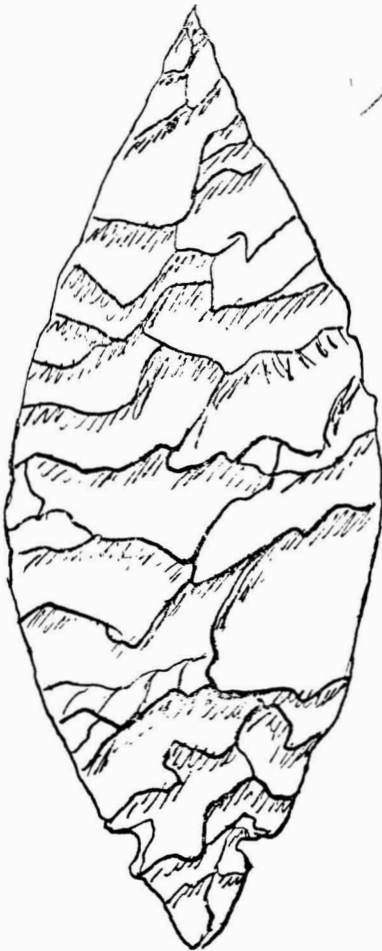
Most are 2 1/2 to 3 inches in length



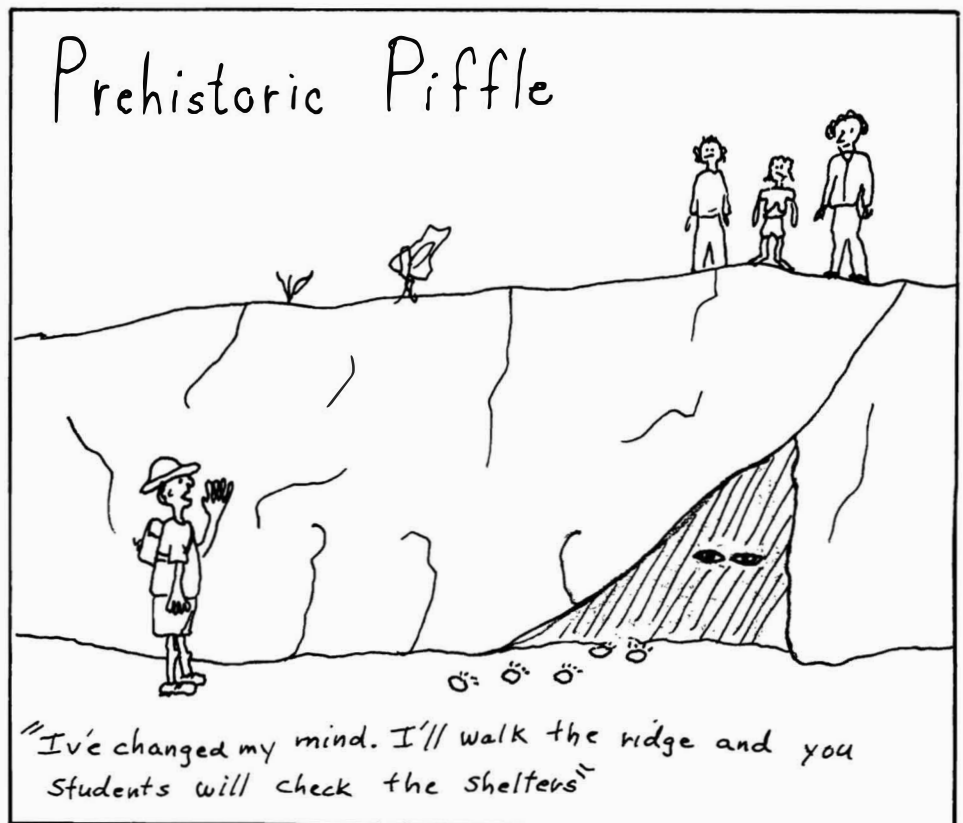
Nebo Hill



Typical Clovis Fluted points. Actual size. (Drawn from J. A. Eichenberger casts. This and succeeding credits to the Eichenberger casts refer to a collection which is well known to North American archeologists and which can be purchased from the Denver Museum of Natural History.)



Turkey Tail



WE FOUND THIS IN OUR MAILBOX ONE DAY. IT WAS UNSIGNED. WE WONDER WHY.

CHAPTER REPORTS

NORTHWEST CHAPTER: (FROM THE NWA'S NEWSLETTER)

JULY MEETING: SALVAGE WORK CONTINUED AT THE ROCK CREEK OSSUARY WHERE WORK INITIATED IN JUNE WAS COMPLETED. THE MATERIAL RECOVERED HAS SINCE BEEN ANALYZED, AND AN ILLUSTRATED REPORT HAS BEEN PREPARED FOR PUBLICATION.

AUGUST MEETING: KENT VANZANT, GRADUATE STUDENT AT THE UNIVERSITY OF IOWA, TOOK CHAPTER MEMBERS ON A TOUR OF ICE AGE DEPOSITS BETWEEN SIOUX RAPIDS AND CHEROKEE. THE TRIP WAS ENTITLED "AN EXAMINATION OF STRATIGRAPHIC RELATIONSHIPS OF TAZEVELL DRIFT IN NORTHWEST IOWA."

JULY 8 PAUL WILLIAMS, HINTON, AND PAT MCALISTER, CHEROKEE, VISITED TWO OF THE SITES FOUND IN THE PERRY CREEK SURVEY FOR THE PURPOSE OF PHOTOGRAPHING THEM. VISITED WERE THE REIDIGOR SITE (13PM54) AND 13PM53, A PALEONTOLOGICAL SITE.

JULY 30, MRS. MERRILL JOHNSON, TURIN, IOWA, CALLED THE MUSEUM TO REPORT THAT A NEW FACE HAD BEEN OPENED AT THE GRAVEL PIT. PAT MCALISTER AND PAUL WILLIAMS THEN VISITED THE SITE, AND REPORT THAT IT IS ON THE SOUTH SIDE OF THE PIT FACING THE HIGHWAY. WHILE THEY WERE AT THE GRAVEL PIT, PAT AND PAUL FOUND SEVERAL FOSSILIZED BONES INCLUDING TEETH, HORSE BONES, A MAMMOTH TOOTH AND A SKULL FRAGMENT OF A LARGE CARNIVORE (PERHAPS A WOLF).

AUGUST 10 CHUCK AND SHIRLEY SMITH, DUANE, CAROL AND DIANA ANDERSON AND PAT MCALISTER VISITED AN AREA NORTH OF CHEROKEE ALONG THE LITTLE SIOUX RIVER WHERE MOUNDS HAD BEEN REPORTED. AFTER A LONG CLIMB TO THE SITE, NO EVIDENCES OF CULTURAL MATERIALS WERE FOUND, AND IT WAS CONCLUDED THAT THE MOUND WAS NATURAL.

AUGUST 12 HAROLD JOHNSTON, ONAWA, OWNER OF THE TURIN SITE (13MN2), CALLED TO REPORT THAT TWO GROUPS OF BONE WERE VISIBLE--ERODING OUT OF A CLIFF AT THE SITE NEAR WHERE THE TURIN BURIALS WERE DISCOVERED IN 1955. DUANE, CAROL AND DIANA ANDERSON, PAUL WILLIAMS, JOE SEALS AND PAT MCALISTER VISITED THE SITE THAT AFTERNOON. ONE GROUP OF "BONES" TURNED OUT TO BE LIMESTONE CONCRETIONS, AND THE OTHER WERE MODERN HORSE BONES.

JOHN CASSENS OF CHEROKEE HAS DONATED SEVERAL FOSSIL TURTLES, MAMMAL BONES AND GASTROPODS OF TERTIARY AGE FROM THE BRULE AND CHADRON FORMATION OF SOUTH DAKOTA.

SOUTHEAST CHAPTER: (SUBMITTED BY GEORGE BAKER, CHAPTER PRESIDENT)

THE REV. BOYCE M. BENNETT, JR., PROFESSOR OF OLD TESTAMENT AT THE GENERAL THEOLOGICAL SEMINARY, NEW YORK CITY, GAVE A SLIDE SHOW ENTITLED "THE ARCHAEOLOGICAL SEARCH FOR AN ANCIENT BIBLICAL SITE" FOR THE SOUTHEAST CHAPTER ON FRIDAY, AUGUST 11. DR. BENNETT WAS A FELLOW OF THE AMERICAN SCHOOL OF ORIENTAL RESEARCH IN JERUSALEM DURING 1967-1968. HE HAS EXCAVATED AT GEZER AND SUWANET ETH-THANIYEH IN ISRAEL. THE SHOW ILLUSTRATED WHAT A BIBLICAL ARCHAEOLOGIST MUST DO TO LOCATE ANCIENT SITES WHICH HAVE BEEN BURIED FOR THOUSANDS OF YEARS. DR. BENNETT WAS A HOUSE GUEST OF THE FRED FULTONS, SELMA, IOWA. HE IS AN ACCOMPLISHED SCULPTOR AS WELL AS AN ARCHAEOLOGIST.

THE LONE RANGER CHAPTER: (GEORGE HORTON, IOWAN IN EXILE)

IT ALL STARTED ABOUT MAY 23. I NEEDED AN EGO TRIP SO I PACKED UP AND HEADED TO MEXICO. I'VE ALWAYS WANTED TO SEE THE BIG MESO-AMERICAN SITES TO THE SOUTH. I FOLLOWED MARNIE MANDEVILLE (IOWA STATE UNIVERSITY) DOWN TO TULA, A SMALL VILLAGE NEAR MEXICO CITY, WHERE SHE WAS A PART OF A TEAM OF ARCHEOLOGIST FROM THE UNIVERSITY OF MO. KEEPING PERFECT CONTROL ON A BURIED TILTED TOLTEC CITY. I TRAVELED WITH AND WORKED WITH THIS TEAM. THEY WERE TRUELY DEVOTED TO MODERN ARCHAEOLOGICAL RESEARCH. I WISH TO THANK DIRECTOR DR. RICHARD DIEL AND DR. ROBERT BENFORD (DEPT. HEAD OF ANTHROPOLOGY AT THE UNIV. OF MO.) AND HIS WIFE ALICE, HEAD CREW CHIEFS DAN HEALAN, TERRY STOCKER. SPECIAL THANKS TO MARNIE.

I CAME BACK TO THE MID-WEST IN MID JULY TO JOIN FELLOW IOWAN RICHARD CECH AT THE LARGEST NORTH AMERICAN DIG, THE KOSTER SITE AT KAMPSVILLE, ILLINOIS. DICK IS A CREW CHIEF FOR THE PROJECT. I STAYED AT THE PROJECT FOR TWO WEEKS AS A GUEST. I HOPE TO SHOW A SLIDE SHOW OF ALL MY TRAVELS NEXT SPRING AT THE I.A.S. MEETING.

FEATURED COLLECTION

JAMES D. REYSACK OF ACKLEY

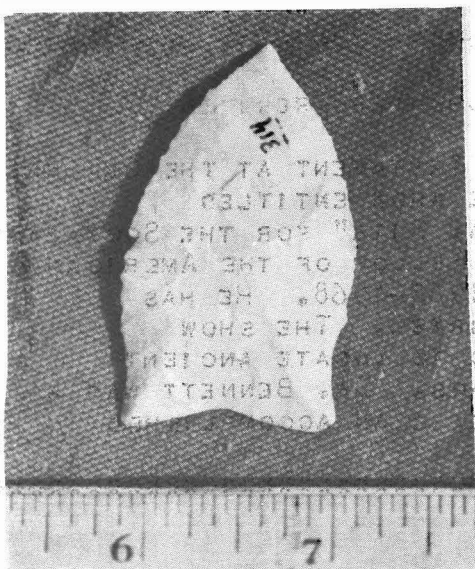
THE ARTIFACTS SHOWN BELOW WERE FOUND BY JAMES D. REYSACK IN HARDIN COUNTY.

(SEE THE ARTICLE ON PAGES 3 AND 4)

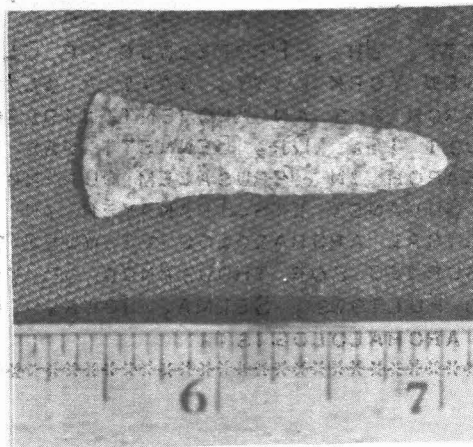
THE COLLECTION IS CAREFULLY MARKED AND RECORDED. JIM HAS DONE CONSIDERABLE RESEARCH ON HIS FINDS WHICH IS USEFUL WHEN HE GIVES TALKS AND DEMONSTRATIONS TO LOCAL GROUPS. HE PICKED UP HIS MATERIAL THROUGH SURFACE HUNTING. JIM BELIEVES ARTIFACTS WHICH ARE PURCHASED HAVE LITTLE MEANING TO THE COLLECTOR. HE ALSO REFUSES TO DIG ON HIS SITES WITHOUT PROPER SUPERVISION AND TRAINING.



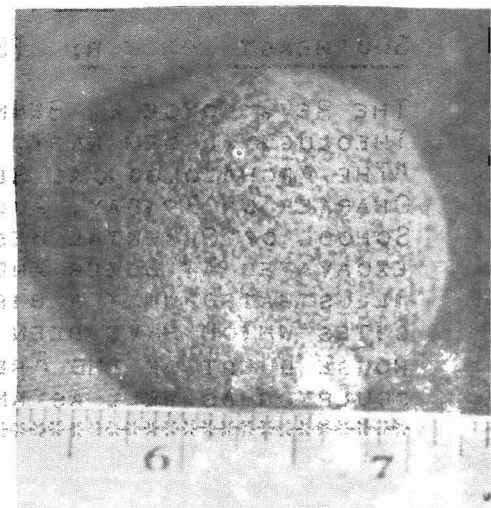
JAMES D. REYSACK



THE PRIZE: AN EASTERN CLOVIS



A RECENT FIND



GROUND STONE IN THE FORM OF A CONE

WHAT IS IT?

YOU DECIDE FOR YOURSELF. THE ARTIFACT PICTURED HERE ON BOTH SIDES WAS FOUND IN ASSOCIATION WITH THE SAME SITE WHICH PRODUCED THE EASTERN CLOVIS ON PAGE 8.

IF YOU HAVE A PIECE WHICH BELONGS IN THIS SECTION, PLEASE CONTACT US. THE SAME HOLDS TRUE FOR THE FEATURED COLLECTION

SEND A CLEAR BLACK AND WHITE PHOTO WHICH CAN BE CUT FOR USE IN THE NEWSLETTER. IF THIS IS NOT POSSIBLE, WE WILL BE HAPPY TO PHOTOGRAPH THE ARTIFACTS. LET US HEAR FROM YOU!

WARNING: DO NOT DIG!!!

ADRIAN ANDERSON, ASSISTANT STATE ARCHEOLOGIST AND DUANE ANDERSON, PRESIDENT OF THE IOWA ARCHEOLOGICAL SOCIETY, HAVE BOTH CONTACTED THE NEWSLETTER ABOUT RECENT EVENTS RELATED TO THE EXCAVATION OF BURIALS AND VARIOUS INDIAN MOVEMENTS. THIS IS A TOUCHY QUESTION AND DESERVES THE CAREFUL CONSIDERATION OF EVERYONE CONCERNED. ONE THING IS CLEAR: UNAUTHORIZED EXCAVATIONS MUST BE AVOIDED. FOR ONE REASON, THE IOWA CODE IS PRESENTLY UNDER STUDY BY THE ATTORNEY GENERAL IN RELATIONSHIP TO ARCHEOLOGICAL PROJECTS IN THE STATE. THE CODE READS:

✓ 714.21 VIOLATING SEPULCHER. IF ANY PERSON, WITHOUT LAWFUL AUTHORITY, WILLFULLY DIG UP, DISINTER, REMOVE, OR CARRY AWAY ANY HUMAN BODY, OR THE REMAINS THEREOF, FROM ITS PLACE OF INTERMENT; OR AID, ASSIST, ENCOURAGE, INCITE, OR PROCURE THE SAME TO BE DONE OR ATTEMPTED; OR WILLFULLY RECEIVE, CONCEAL, OR DISPOSE THEREOF; OR IF ANY PERSON, WITH THE INTENT TO COMMIT ANY OF THE AFORESAID ACTS, PARTIALLY PERFORM THE SAME, HE SHALL BE IMPRISONED IN THE PENITENTIARY NOT MORE THAN TWO YEARS, OR BE FINED NOT EXCEEDING TWENTY-FIVE HUNDRED DOLLARS, OR BOTH. (OTHER CLAUSES I.E. 714.23 AND 714.24 FORBID THE DESTRUCTION OR EVEN DISTURBANCE OF ANY CEMETERY, PRIVATE OR PUBLIC)

ANOTHER REASON TO AVOID EXCAVATIONS AT THIS TIME IS REVEALED IN THE FOLLOWING NOTE WHICH APPEARED IN THE NORTHWEST CHAPTER NEWSLETTER.

AUGUST 28 DUANE ANDERSON WENT TO SIOUX CITY AT THE REQUEST OF BILL DIAMOND, DIRECTOR OF THE SIOUX CITY PUBLIC MUSEUM, TO RECORD A BURIAL SITE AND MAKE RECOMMENDATIONS. THE SITE HAS BEEN THE SUBJECT OF CONSIDERABLE DISPUTE BETWEEN LOCAL OFFICIALS AND MEMBERS OF THE AIM (AMERICAN INDIAN MOVEMENT) FROM OUT OF STATE. ON THE WEEKEND BEFORE ANDERSON'S ARRIVAL, BILL DIAMOND AND GEORGE SUN VISITED THE SITE OCCUPIED BY AIM MEMBERS TO DISCUSS THE SITUATION. AS A RESULT, DIAMOND WAS STRUCK IN THE MOUTH AND MR. SUN RECEIVED TWO MINOR KNIFE WOUNDS. NUMEROUS PROBLEMS CAME TO LIGHT INVOLVING A STATE LAW COVERING REMOVAL OF HUMAN REMAINS, A LAW SUIT INITIATED BY AIM TO STOP EXCAVATION, A REQUEST TO THE STATE FOR CLARIFICATION OF THE LAWS INITIATED BY THE STATE ARCHEOLOGIST AND THE FACT THAT BONES RECOVERED PREVIOUSLY HAD BEEN TAKEN TO THE ROSEBUD RESERVATION IN SOUTH DAKOTA FOR REBURIAL. MANY PROBLEMS REMAIN AND THE HOPE FOR OBTAINING MUCH INFORMATION FROM THIS SITE IS AT BEST BLEAK. THE SITE HAS BEEN RECORDED AS 13WD401 AND HAS BEEN NAMED THE SIOUXLAND SAND AND GRAVEL SITE.

DEBRISBOOK REVIEWS:

MCGIMSEY, CHARLES R., III, PUBLIC ARCHAEOLOGY, NEW YORK: SEMINAR PRESS, 1972, 265PP.

A HOW-TO-DO-IT GUIDE ON DESIGNING AN EFFECTIVE STATE-SUPPORTED ARCHAEOLOGICAL PROGRAM PLUS AN INVENTORY OF ALL EXISTING LAWS (STATE AND FEDERAL) RELATING TO ARCHAEOLOGY.

THE BOOK BEGINS WITH A DISCUSSION OF SUCH THINGS AS THE PUBLIC RIGHT TO ARCHAEOLOGICAL KNOWLEDGE AND THE RELATIONSHIP BETWEEN THE PROFESSIONAL AND THE AMATEUR. ONE MAJOR CONTRIBUTION OF THIS SECTION IS THAT IT POINTS OUT THE TREMENDOUS DEPENDENCE OF THE PROFESSIONAL ARCHAEOLOGIST ON THE INTERESTED AMATEUR.

THE BOOK THEN BECOMES A GUIDE FOR STATES DESIRING TO BEGIN OR IMPROVE A STATE SUPPORTED RESEARCH PROGRAM. MCGIMSEY DISCUSSES WHAT WORTS OF ACTION (LEGAL AND OTHERWISE) THE DIFFERENT STATES HAVE TAKEN AND TELLS WHAT HIS STATE (ARKANSAS) HAS DONE TO ACHIEVE THE EFFECTIVE PROGRAM NOW IN EXISTANCE. MCGIMSEY'S PRIDE IN HIS OWN STATE'S PROGRAM SEEMS JUSTIFIABLE, EVEN THOUGH A BIT TOO OBVIOUS.

HE CITES AN IOWA LAW PROHIBITING DISTURBANCE OF HUMAN BURIALS AND RAISES THE QUESTION AS TO WHETHER ARCHAEOLOGICAL REMAINS ARE COVERED. HE NOTES THE LACK OF PROVISION FOR RELIEF BY PROFESSIONAL ARCHAEOLOGISTS AND CALLS FOR CLARIFICATION. NOWHERE, HOWEVER, ARE THE VIEWS OF PRESENT DAY INDIANS TAKEN INTO ACCOUNT.

THE BOOK IS WELL WRITTEN BUT BORING. IT IS AN EXCELLENT SOURCE OF IDEAS AND SHOULD BE READ BY ALL OF US WHO ARE ANXIOUS TO KNOW WHAT WE AS AMATEURS, CAN DO TO SAVE OUR ARCHAEOLOGICAL RESOURCES. IT IS HOPED THAT OUR STATE WILL GIVE CAREFUL CONSIDERATION TO MCGIMSEY'S ARGUMENTS ON BEHALF OF PRESERVATION OF ANTIQUITIES. (REVIEWED BY PATRICIA McALISTER, CHEROKEE, IOWA)

HEROLD, ELAINE BLUHM, THE INDIAN MOUNDS AT ALBANY ILLINOIS, DAVENPORT: DAVENPORT MUSEUM, 1971, 164 PAGES, 70 MAPS, PHOTOGRAPHS, & TABLES WITH AN APPENDIX BY PAUL LYTLE JAMISON.

HAVE YOU EVER WONDERED WHAT YOU WOULD FIND IN AN INDIAN MOUND? SINCE THE TIMES ARE NOT RIGHT TO DIG ONE UP, THE NEXT BEST THING IS TO READ THE LITERATURE ON THE SUBJECT. THE DAVENPORT MUSEUM HAS JUST PUBLISHED A BOOK ABOUT MOUNDS WHICH SHOULD BE OF SPECIAL INTEREST TO MEMBERS OF THE SOCIETY. THE DAVENPORT ACADEMY OF NATURAL SCIENCES, FOUNDED IN 1867, DEVELOPED AN EARLY INTEREST IN THE INDIAN MOUNDS OF THE DAVENPORT AREA, SPECIFICALLY THE MIDDLE WOODLAND MOUNDS NEAR ALBANY, ILLINOIS. SUBSEQUENT EXCAVATIONS REVEALED A WEALTH OF INFORMATION WHICH WAS CAREFULLY RECORDED BY MEMBERS OF THE ACADEMY. THESE NOTES, SKELETAL MATERIAL, AND ARTIFACTS EVENTUALLY WOUND UP IN THE DAVENPORT MUSEUM. OFFICIALS THERE RECENTLY SHIFTED THROUGH THE MATERIAL AND MANUSCRIPTS PREPARED BY THE ACADEMY, SUBMITTED THE REMAINS FOR MODERN EVALUATION, AND PUBLISHED THE RESULTS AS THE DAVENPORT MUSEUM ANTHROPOLOGICAL PAPERS No. 1.

THE BOOK IS INTERESTING FOR SEVERAL REASONS. IT REVEALS THE NATURE OF ARCHEOLOGICAL RESEARCH AND SPECULATION IN THE LATE 19TH AND EARLY 20TH CENTURIES. IT PROVIDES DETAILED INFORMATION ABOUT MOUNDS WHICH HAVE INCREASINGLY BEEN DESTROYED BY THE PLOW, BULLDOZER OR GRAVE ROBBER. IT ALSO CONTAINS CONSIDERABLE DATA ABOUT RECOVERED ARTIFACTS WHICH IS USEFUL FOR CROSS REFERENCE AND STUDY. THE MODERN ARCHEOLOGIST MAY CRINGE WHEN HE OR SHE SEES THE PICTURE OF THE HORSE DRAWN SCRAPER WHICH WAS USED TO UNCOVER THE BURIALS. IT IS REMARKABLE, HOWEVER, THAT THE EXCAVATIONS

WERE CONDUCTED WITH ENOUGH SKILL TO MAKE THE NOTES AND RECOVERED MATERIAL STILL USEFUL 65 YEARS LATER. MEMBERS OF THE IOWA ARCHEOLOGICAL SOCIETY MIGHT TAKE A SPECIAL INTEREST IN THE FACT THAT THE BOOK IS PRODUCED IN IOWA. WE HOPE TO SEE DAVENPORT MUSEUM ANTHROPOLOGICAL PAPERS No. 2, 3, ETC. (REVIEWED BY GARY L. VALEN)

YOU SHOULD HAVE RECEIVED AN ANNOUNCEMENT ABOUT THIS BOOK BY NOW BUT ORDERS MAY BE MADE DIRECTLY TO THE DAVENPORT MUSEUM, PUBLICATIONS DEPT., 1717 W. 12TH ST., DAVENPORT, IOWA, 52804. COST: \$2.75 WHICH INCLUDES POSTAGE.

WE JUST RECEIVED A BROCHURE FROM THE ILLINOIS ARCHAEOLOGICAL SURVEY ANNOUNCING THEIR MONOGRAPH #3, "A FORMAL ANALYSIS OF CAHOKIA CERAMICS FROM THE POWELL TRACT" BY PATRICIA J. O'BRIEN. WE HAVE NOT REVIEWED THE BOOK BUT THE DESCRIPTION IS AS FOLLOWS:

DR. O'BRIEN'S STUDY BRINGS TO OUR ATTENTION THE FULL MAGNITUDE OF DIVERSITY CONTAINED WITHIN THE CAHOKIAN POTTERY ASSEMBLAGE. OUR KNOWLEDGE OF CAHOKIAN POTTERY HAS LONG BEEN KNOWN FROM PRELIMINARY REPORTS ALTHOUGH THE ARCHAEOLOGICAL RECORD OF CAHOKIA, ILLINOIS' LARGEST AND MOST COMPLEX SITE, CAN POTENTIALLY GREATLY ENHANCE OUR KNOWLEDGE OF MIDWESTERN PREHISTORY. O'BRIEN'S STUDY CONTAINS A FULLY ILLUSTRATED DESCRIPTION AND CHRONOLOGY OF THE POTTERY FROM A LOCATION ON THE WESTERN EDGE OF THE SITE THAT WAS EXCAVATED BY THE UNIVERSITY OF ILLINOIS, URBANA. THIS REPORT IS ONE OF MANY THAT WILL RESULT FROM THE RECENT CONCENTRATED ATTENTION ON THIS FAMOUS SITE BY MANY ARCHAEOLOGICAL TEAMS.

THE PRICE IS \$3.75 PLUS \$.25 FOR POSTAGE AND HANDLING. SEND CHECK OR MONEY ORDER TO THE ILLINOIS ARCHAEOLOGICAL SURVEY, 137 DAVENPORT HALL, UNIVERSITY OF ILLINOIS, URBANA, ILLINOIS, 61801.

HAVE YOU PAID YOUR 1972-73 DUES? OUR FISCAL YEAR STARTS JULY 1ST SO DUES ARE DUE! IT IS A BIG HELP TO THE SEC. AND A SAVING TO THE SOCIETY IF EACH MEMBER SENDS IN HIS DUES NOW. \$4.00 ACTIVE, \$10 SUSTAINING, \$50 LIFE

OUR THANKS TO TOM ROYSTER OF MUSCATINE FOR HIS REPORT CONCERNING SOME MOUNDS IN ILLINOIS. WE UNDERSTAND HE HAS NOW SENT THIS INFORMATION TO THE UNIVERSITY OF IOWA.

THERE IS A MEETING OF THE PRESERVATION COMMITTEE ON OCTOBER 22 IN AMES. THE PURPOSE WILL BE TO DISCUSS WITH ADRIAN ANDERSON WAYS OUR MEMBERSHIP CAN AID WITH THE STATE PROGRAM AND PERHAPS MAKE COLLATERAL CONTRIBUTIONS. WE WILL HAVE A FULL REPORT IN THE NEXT NEWSLETTER.

WE RECEIVED A PROMISE THAT THE REMEMBER THE BERTRAND COMMITTEE REPORT, "DEADEYE" MCCARTY, CHAIRMAN, WOULD BE READY BY THIS ISSUE, BUT DUE TO SHORTNESS OF TIME AND SPACE THIS REPORT WILL BE PUBLISHED NEXT TIME.

THE ANNUAL MEETING WILL BE IN MOUNT AYR ON MAY 14 AND 15. WHILE THIS IS SEVERAL MONTHS AWAY, MARK PLANS TO ATTEND. ANY SUGGESTIONS FOR PROGRAM, SPEAKERS, ETC. SHOULD BE SENT TO HERB SOVEREIGN, 906 N. TAYLOR, MT. AYR.

THIS IS THE LAST ISSUE OF THE NEWSLETTER BEFORE CHRISTMAS SO WE WILL REPEAT A SUGGESTION THAT SOCIETY MEMBERSHIPS MAKE EXCELLENT GIFTS. WHERE ELSE CAN YOU GET ALL OF THIS FOR \$4.00? SUCH A DEAL!

KEEP US POSTED. WE WANT YOUR NAME, PICTURE, ARTICLE, ETC. FOR THE NEXT ISSUE.

N E W M E M B E R S

KIM GRAY	WATERLOO	DALE E. ROBERTS	STERLING
THELMA PIDCOCK	CORYDON	MONA SOVEREIGN	MT. AYR
J.W. REHARD	DES MOINES	HARVEY C. YOUNG	NEW MARKET
	EARL CARMICHAEL	PICKERING, Mo.	

I A S M E M B E R S H I P S

ACTIVE.....\$4.00
 INSTITUTIONAL.....\$4.00
 SUSTAINING.....\$10.00
 LIFE.....\$50.00

SEND CHECK OR MONEY ORDER TO:
 RUTH THORNTON
 I A S SECRETARY-TREASURER
 326 OTSEGO STREET
 STORM LAKE, IOWA 50588

THE IOWA ARCHEOLOGICAL SOCIETY IS A NON-PROFIT, SCIENTIFIC SOCIETY
 LEGALLY ORGANIZED UNDER THE CORPORATE LAWS OF IOWA.

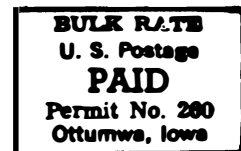
MEMBERS OF THE SOCIETY ARE AMATEURS AND PROFESSIONALS WITH A SERIOUS
 INTEREST IN THE ARCHEOLOGY OF IOWA AND THE MIDWEST.

THE NEWSLETTER IS PUBLISHED FOUR TIMES A YEAR. THE JOURNAL OF THE IOWA
 ARCHEOLOGICAL SOCIETY IS ISSUED ONCE A YEAR. BACK ISSUES ARE AVAILABLE
 THROUGH THE EDITORS.

IOWA ARCHEOLOGICAL SOCIETY
 OFFICE OF THE NEWSLETTER EDITOR
 GARY AND BETSY VALEN
 R. R. 3
 INDIANOLA, IOWA 50125

ADDRESS CORRECTION REQUESTED

Non-Profit Organization



MRS. JOHN NUTTY
 809 DOUGLAS
 AMES, IOWA 50010