

# NEWSLETTER

JULY 1972

NUMBER 65

## MESSAGE FROM THE PRESIDENT

THE INTERNAL REVENUE SERVICE HAS NOTIFIED THE BUSINESS OFFICE OF THE IOWA ARCHEOLOGICAL SOCIETY THAT OUR ORGANIZATION HAS BEEN RECOGNIZED AS EXEMPT FROM FEDERAL INCOME TAX UNDER SECTION 501 (C)(3) OF THE INTERNAL REVENUE CODE. THE EXEMPTION LETTER EXPIRES ON THE SAME DAY AS OUR CHARTER, FEBRUARY 1, 2015. THIS BIT OF GOOD NEWS CONCLUDES NEARLY TWO YEARS OF NEGOTIATIONS AND WE ARE INDEBTED TO MAHER, MELOY AND HANKENS OF CHEROKEE FOR THEIR ASSISTANCE IN CLEARING UP THIS IMPORTANT MATTER.



AFTER MEETING WITH NEWSLETTER EDITORS GARY AND BETSY VALEN, I CONTACTED THE HEADS OF ALL CHAPTERS REQUESTING THAT A QUARTERLY NEWSLETTER REPORT BE SUBMITTED BY CHAPTER OFFICIALS IN ORDER TO MAKE THE NEWSLETTER A MORE USEFUL LINK IN THE COMMUNICATION NETWORK WITHIN THE SOCIETY. ALL SOCIETY OFFICERS AND TRUSTEES AGREE THAT A NEWSLETTER OF STATE-WIDE SCOPE SHOULD NOT WANT FOR MATERIAL, IN VIEW OF ALL THE VARIED ACTIVITIES BEING CONDUCTED BY CHAPTERS AND MEMBERS AT LARGE THROUGHOUT THE YEAR.

IT IS OUR HOPE TO BE ABLE TO PROVIDE INFORMATION ON ACTIVITIES, MEETINGS, FIELD TRIPS, RECENT FINDS AND ACTIVITIES, OBITUARIES, GOSSIP, BOOK REVIEWS, HUMOR AND THE LIKE IN EACH ISSUE. IN SHORT, WE WOULD LIKE TO MAKE THE NEWSLETTER A NEWSLETTER. THIS CAN ONLY BE DONE WITH THE COOPERATION OF THOSE WHO ARE MAKING THE NEWS. OFFICERS OF ALL CHAPTERS ARE RECEIVING A QUARTERLY REPORT FORM TO FILL OUT AND RETURN TO THE EDITOR. KEEP YOUR OFFICERS POSTED AND THEY WILL KEEP US POSTED. WE HAVE A GOOD TEAM IN THE VALENS, NOW IF THEY COULD JUST HAVE SOMETHING TO WORK WITH....

ANOTHER ITEM OF BUSINESS TO BE CONDUCTED IS THE APPOINTMENT OF THE PRESERVATION COMMITTEE AS PROVIDED BY BY-LAW 2(c) AND REINACTED LAST YEAR UNDER HERB SOVEREIGN WHO SERVED AS CHAIRMAN FOR 1971-72. THE APPOINTMENTS FOR THIS YEAR INCLUDE THE FOLLOWING:

CHAIRMAN 1972-73: DON G. SPEARS, OTTUMWA

ONE YEAR TERM 1972-73

RICHARD MILLER, SILVER CITY  
DEANE V. PETERS, CLINTON  
RICHARD G. SLATTERY, DAVENPORT

DR. H.P. FIELD, DECORAH  
GLEN W. DOUD, OSKALOOSA  
GARY E. STEEPLES, OTTUMWA

## TWO YEAR TERM 1973-74

GEORGE HORTON, IOWA CITY  
CATHERINE JOHNSON, OSKALOOSA  
GEROLD E. LONG, PROMISE CITY

HERBURT SOVEREIGN, MT. AYR  
JAMES S. PILGRIM, CLINTON  
GENE CRAWFORD, KALONA

## THREE YEAR TERM 1974-75

DON G. SPEARS, OTTUMWA  
DAVID M. GRADWOHL, AMES  
ROBERT M. SLATTERY, FARMINGTON

HOWARD JENSEN, FORT DODGE  
WILLIS CUMMING, DES MOINES  
PATRICIA MCALISTER, CHEROKEE

SOME CHANGES WERE REQUIRED WITHIN THE PRESERVATION COMMITTEE TO ALLOW FOR THE REMOVAL OF NON-MEMBERS. IT IS MY SINCERE HOPE THAT THOSE APPOINTED WILL ACCEPT THEIR POSITIONS AND GIVE DON SPEARS THE SUPPORT HE NEEDS TO OPERATE EFFECTIVELY. DON IS COOPERATING WITH ADRIAN ANDERSON, STATE LIAISON OFFICER FOR HISTORIC PRESERVATION, IN AN EFFORT TO IMPLEMENT SURVEY PROJECTS TO BE FUNDED IN PART BY THE STATE, IN WHICH MEMBERS OF OUR SOCIETY CAN PARTICIPATE.

FINALLY, I AM HAPPY TO REPORT THAT THE OFFICERS AND TRUSTEES OF THE SOCIETY HAVE VOTED UNANIMOUSLY TO USE THE \$40. MEMORIAL FUND FOR THE PURCHASE OF DON SPEARS' TYPEWRITER FOR USE BY GARY VALEN IN PREPARING THE NEWSLETTER. AS LUCK WOULD HAVE IT, THE MACHINE IS NEEDED FOR THE CONTINUATION OF THE NEWSLETTER AND IT HAS NOW BECOME SOCIETY PROPERTY. IT WAS THE FEELING OF ALL INVOLVED THAT THE EXPENDITURE WAS AN APPROPRIATE ONE FOR USE OF THE MEMORIAL FUND AND WE ARE HAPPY THAT IT WORKED OUT.

DUANE C. ANDERSON  
PRESIDENT, IAS

## OBITUARY

MAY 24, 1972 A TRAGIC AND PARADOXICAL INCIDENT HAS CLAIMED THE LIVES OF ROGER BANKS AND HIS WIFE REVA OF WESTFIELD. FOR TWELVE YEARS ROGER HAS WORKED TO RECORD SITES AND COLLECT AND PRESERVE SPECIMENS IN PLYMOUTH COUNTY. HIS ABILITY AS AN ILLUSTRATOR IS RECOGNIZED THROUGHOUT THE REGION AND HIS ARTIFACT DRAWINGS HAVE ADDED MUCH TO PAST ISSUES OF BOTH THE IAS AND NWIAS NEWSLETTERS. EVERYONE WHO CAME INTO CONTACT WITH ROGER WAS IMPRESSED BY HIS ENERGY AND ABILITY IN VIRTUALLY EVERY AREA HE PURSUED. IT WAS THROUGH HIS EFFORTS IN COORDINATING LOCAL ARRANGEMENTS THAT MUCH OF THE PROFESSIONAL WORK IN NORTHWESTERN IOWA BY THE UNIVERSITIES OF WISCONSIN, NEBRASKA AND IOWA HAS BEEN ACCOMPLISHED. ROGER HAS WRITTEN SEVERAL ARTICLES IN THE NEWSLETTERS AND HAS HELD NUMEROUS OFFICES IN BOTH THE IAS AND THE NORTHWEST CHAPTER. MOST RECENTLY HE WAS ASSISTANT EDITOR OF THE IOWA JOURNAL THROUGH VOLUMES 15 AND 16. ROGER'S INTERESTS WERE GENUINE AND HIS LOVE FOR ARCH-  
AEOLOGY WAS STRONG. HIS UNSELFISH CONCERN WAS FOR THE ADVANCEMENT OF KNOWLEDGE, AND IN THAT HE EXCELLED. FOR THAT, AND FOR HIS HELP AND FRIENDSHIP, HE WILL BE REMEMBERED BY ALL OF US.

## NOTE FROM THE EDITORS

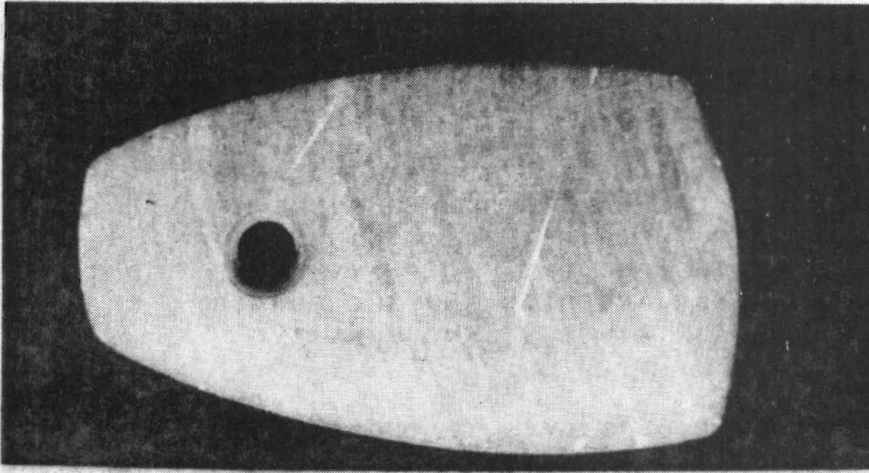
BETSY AND I WERE ELECTED COEDITORS OF THE NEWSLETTER AT THE ANNUAL MEETING OF THE SOCIETY IN FORT DODGE. WE HAVE WONDERED SINCE IF OUR ENTHUSIASM GOT THE BEST OF US, BUT THE FIRST ISSUE IS IN YOUR HANDS AND WE ARE STILL EXCITED ABOUT THE PROJECT. WE HAVE HAD VALUABLE ASSISTANCE FROM PRESIDENT DUANE ANDERSON AND THE FORMER EDITOR, DON SPEARS. OUR GOAL IS TO MAINTAIN THE SAME QUALITY AND DEDICATION OF OUR PREDECESSOR.

IT HAS BEEN SUGGESTED THAT WE INTRODUCE OURSELVES TO THOSE WHO WERE NOT PRESENT AT THE FORT DODGE MEETING. BETSY AND I LIVE ON A FARM NEAR INDIANOLA. SHE IS A GEOLOGY MAJOR AT SIMPSON COLLEGE WHERE I AM A MEMBER OF THE HISTORY FACULTY. OUR INTEREST IN ARCHEOLOGY STEMS FROM OUR SURFACE COLLECTING IN THE WARREN COUNTY AREA. WE JOINED THE IOWA ARCHEOLOGY SOCIETY TO LEARN MORE ABOUT THE PREHISTORY OF THE STATE AND TO PUSH FOR THE PRESERVATION OF MATERIAL AND SITES. WE HAVE SINCE DISCOVERED THAT THE MOST REWARDING ASPECT OF OUR MEMBERSHIP HAS BEEN TO MEET AND ASSOCIATE WITH MANY WONDERFUL PEOPLE. IT IS OUR HOPE THAT THE NEWSLETTER WILL BE THE INSTRUMENT TO ACHIEVE OUR GOALS FOR THE SOCIETY AND WILL SERVE AS A MEANS OF COMMUNICATION AMONG ITS MEMBERS. THIS CAN NOT BE ACCOMPLISHED WITHOUT THE COOPERATION OF THE FULL MEMBERSHIP. BETSY AND I ENCCURAGE (PLEAD, BEG) SUGGESTIONS, MATERIAL, AND COMMENTS FROM ALL OF YOU. WE HAVE SEVERAL IDEAS WHICH WE HOPE WILL STIMULATE YOUR INTEREST AND SOLICIT YOUR HELP.

1. WE PLAN TO FEATURE ARTICLES AND MATERIAL WHICH WILL AID THE AMATEUR ARCHEOLOGIST TO INTERPRET AND UNDERSTAND HIS DISCOVERIES.
2. WE HOPE TO INCLUDE CURRENT INFORMATION ABOUT ARCHEOLOGICAL PROJECTS IN THE STATE BY BOTH THE PROFESSIONALS AND AMATEURS. FOR EXAMPLE: WHEN YOU PICK UP AN UNUSUAL PIECE, IT MAY PROVIDE MORE INFORMATION ABOUT PREHISTORY IN IOWA THAN AN ENTIRE SUMMER'S DIG. WE WANT TO LET OTHER MEMBERS KNOW ABOUT YOUR FIND AS A MEANS OF INTEREST AND CROSSREFERENCE.
3. WE WANT TO DO EVERYTHING POSSIBLE TO ADVANCE THE UNDERSTANDING AND EXPERTNESS OF THE AMATEUR ARCHEOLOGIST. THIS IS ESPECIALLY SIGNIFICANT IN THE AREA OF MATERIAL AND SITE PRESERVATION AND RECORDING.
4. WE INTEND TO INCLUDE AS MUCH INFORMATION AS POSSIBLE IN EACH ISSUE ABOUT INDIVIDUAL MEMBERS, REGIONAL CHAPTERS, AND THE IOWA ARCHEOLOGICAL SOCIETY ITSELF.

BETSY AND I WILL DO OUR PART BY GATHERING INFORMATION WHENEVER AND WHEREVER POSSIBLE. WE ARE PREPARED TO GRAB OUR CAMERAS AND TRAVEL TO ANY SITE, MEETING, OR OTHER PLACE WHICH WILL PROVIDE INFORMATION FOR THE NEWSLETTER. WE CAN DO LITTLE, HOWEVER, WITHOUT YOUR HELP. LET US HEAR FROM YOU!

GARY AND BETSY VALEN, EDITORS  
IOWA ARCHEOLOGICAL SOCIETY NEWSLETTER  
R. R. 3  
INDIANOLA, IOWA 50125



**MATERIAL:** GREEN BANDED SLATE  
**FOUND:** WARREN COUNTY, IOWA

WE WANT TO PRINT INFORMATION AND PHOTOGRAPHS IF POSSIBLE ABOUT UNUSUAL FINDS IN THE STATE AND TO RUN A FEATURE WITH THE TITLE: WHAT IS IT?. FOR THE FIRST ISSUE WE HAVE USED A PIECE WE FOUND THIS SPRING TO SERVE IN BOTH THESE CATEGORIES. (AFTERALL, PHOTOGRAPHS COST \$2.00 A PIECE) WE KNOW IT IS CALLED A PENDANT, BUT WHAT WAS ITS USE? WE WILL PRINT AS MANY OF YOUR EXPLANATIONS AS POSSIBLE IN THE NEXT ISSUE.

DO YOU HAVE SOMETHING WHICH CAN BE INCLUDED IN FUTURE NEWSLETTERS?

## ARCHAEOLOGICAL RESEARCH IN SOUTHEASTERN IOWA

### NEW LIGHT ON THE ANCESTORS TO THE IOWAY INDIANS

BY DEAN F. STRAFFIN

**ED. NOTE:** DEAN F. STRAFFIN OF PARSONS COLLEGE AND 5 STUDENTS CONDUCTED EXCAVATIONS DURING THE SUMMER OF 1971 AT TWO VILLAGE SITES ALONG THE MISSISSIPPI NORTH OF BURLINGTON. THEIR REPORT IS PRESENTED HERE IN A SHORTENED VERSION. FURTHER INFORMATION MAY BE OBTAINED FROM DEAN STRAFFIN, ARCHAEOLOGICAL RESEARCH CENTER, PARSONS COLLEGE, FAIRFIELD, IA.

THE EXPEDITION BEGAN EARLY IN JUNE WITH THE ESTABLISHMENT OF A FIELD CAMP AT THE MOUTH OF A SMALL WOODED VALLEY THAT CUTS THROUGH THE BLUFFS ADJACENT TO THE BROAD FLOOD PLAIN OF THE MISSISSIPPI NEAR THE TINY COMMUNITY OF KINGSTON. OUR INITIAL OBJECTIVE WAS TO COLLECT RADIOCARBON SAMPLES FROM A NEARBY SITE IN ORDER TO BETTER PINPOINT IN TIME A RELATIVELY WELL KNOWN PREHISTORIC CULTURE COMMON IN MANY PARTS OF IOWA IN THE FIRST HUNDREDS OF YEARS AFTER THE TIME OF CHRIST. WE ACCOMPLISHED OUR PROJECT OBJECTIVE IN A MATTER OF DAYS AND WERE CONSIDERING OTHER SITES FOR INVESTIGATION WHEN WE ENCOUNTERED A BIT OF LUCK. ONE MORNING A LOCAL RESIDENT OF THE KINGSTON AREA STOPPED BY TO WATCH OUR WORK, AND SHOW US "INDIAN RELIQUIS" THAT HE HAD PICKED UP IN THE VICINITY OVER THE YEARS. HE HAD IN HIS POSSESSION A FRAGMENT OF POTTERY REPRESENTATIVE OF A PREHISTORIC CULTURE ALMOST UNKNOWN IN SOUTHEAST IOWA. THESE PEOPLE ARE REFERRED TO AS THE ONEOTA BY ARCHAEOLOGISTS. WE IMMEDIATELY TRANSFERRED OUR OPERATIONS FOR THE REST OF THE FIELD SESSION TO THE NEWLY DISCOVERED SITE WHICH HAS BEEN NAMED AFTER THE LAND OWNER. FOLLOWING IS A PRELIMINARY REPORT ON THE SCHMEISER ONEOTA SITE.

THE SCHMEISER SITE IS LOCATED ON A BARELY PRECEPTIBLE "ELEVATIONAL HIGH" APPROXIMATELY 0.7 FEET HIGHER THAN THE ADJACENT GROUND, ON THE FLOOD PLAIN OF THE MISSISSIPPI RIVER, SOME 6 MILES SOUTH OF THE PRESENT COMMUNITY OF KINGSTON. THE FLOOD PLAIN IS VERY BROAD AT THIS POINT, AND IT IS

APPROXIMATELY 4.5 MILES FROM THE RIVER TO THE BORDERING BLUFFS. THIS BROAD FLOOD PLAIN WHEN VIEWED FROM AERIAL PHOTOGRAPHS, SHOWS EVIDENCE OF FORMER STREAM CHANNELS AND MEANDER LINES, AND UNTIL THE PLAIN WAS BROUGHT UNDER MODERN CULTIVATION THE ENTIRE EXPANSE WAS MARSHY AND POORLY DRAINED. IN PERIODS OF HIGH WATER THE PLAIN WAS CONVERTED INTO A BROAD, SHALLOW LAKE, AND ACCORDING TO THE INHABITANTS OF THE AREA TODAY, AT CERTAIN TIMES OF THE YEAR LARGE BOATS WERE ABLE TO FLOAT UP PRACTICALLY TO THE BASE OF THE BLUFFS AS LATE AS THE 1890's.

THE SCHMEISER SITE COVERS AN AREA OF UNKNOWN EXTENT IN WHAT IS PRESENTLY A BEAN FIELD AND IS CHARACTERIZED BY PATCHY CONCENTRATIONS OF BROKEN POTTERY, BONES AND CHIPPED STONE VISIBLE WHEN THE FIELD HAS BEEN FRESHLY PLOWED. ONE SUCH SPOT WAS SELECTED FOR EXCAVATION. THE ENTIRE SITE WAS NOT LARGE, COVERING AN AREA OF 500 SQUARE FEET. IT DID NOT HAVE ANY STRATIGRAPHY, AND THE DEPOSIT CONTAINING CULTURAL MATERIAL WAS SHALLOW, EXTENDING ONLY A FEW INCHES BELOW THE PLOW ZONE. THAT IS, THE DEPOSIT BECAME CULTURALLY STERILE BETWEEN EIGHTEEN AND TWENTY INCHES FROM THE SURFACE. MANY FEATURES, INCLUDING HOUSE REMAINS IF PRESENT, HAD BEEN DESTROYED IN THE PLOW ZONE. ONCE THE SITE FILL HAD BEEN REMOVED TO THE BOTTOM OF THE PLOW ZONE, FEATURES WHICH RAN DEEPER INTO THE GROUND COULD BE DELINEATED. A NUMBER OF REFUSE FILLED STORAGE PITS WERE FOUND IN THIS WAY. THE CONTENTS OF THESE PITS ARE CURRENTLY BEING ANALYZED. BESIDE FAUNAL AND FLORAL REMAINS, MORE THAN 7,000 FRAGMENTS OF POTTERY WERE RECOVERED AS WELL AS MANY STONE AND BONE TOOLS.

#### PRELIMINARY CONCLUSIONS

PRELIMINARY ANALYSIS OF THE SCHMEISER ASSEMBLAGE SHOWS MANY SIMILARITIES TO THE KINGSTON SITE MENTIONED EARLIER. ALTHOUGH RADIO CARBON DATES HAVE NOT YET BEEN DERIVED AND TESTS OF VALIDITY FOR OTHER COMPARISONS ARE NOT YET COMPLETE, IT IS POSTULATED THAT THE SIMILARITIES BETWEEN THE KINGSTON AND SCHMEISER SITES ARE DUE TO CLOSE CULTURAL AFFINITY AND THE TWO SITES ARE THEREFORE PROBABLY NEARLY CONTEMPORANEOUS. THE PERIOD OF OCCUPATION IS PREDICTED TO FIT WITHIN THE SPAN OF 1220-1400 A.D. (ED. NOTE: THE KINGSTON SITE WAS MENTIONED IN A SECTION OF THIS REPORT WHICH HAD TO BE LEFT OUT DUE TO LIMITATIONS OF SPACE. BRIEFLY, IT IS AN ONEOTA SITE IN DES MOINES COUNTY WHICH WAS EXCAVATED BY THE AUTHOR IN 1968. SIMILARITIES HAVE BEEN DRAWN BY THE AUTHOR BETWEEN THE KINGSTON SITE, THE MCKINNY ONEOTA SITE, WHICH IS TEN MILES NORTH, AND OTHER ONEOTA SITES IN IOWA AND MISSOURI.)

IN BRIEF, THE SCHMEISER SITE APPEARS TO BE ONE OF TWO RECOGNIZED EARLY ONEOTA HABITATION SITES IN SOUTHEAST IOWA. CONCENTRATIONS OF MATERIAL FOUND ON THE SURFACE MAY HAVE BEEN ASSOCIATED WITH HOUSES BUILT ON SLIGHTLY HIGHER, BETTER DRAINED GROUND. EVIDENCE OF SPECIFIC HOUSE STRUCTURES HAS BEEN DESTROYED THROUGH PLOWING. ONEOTA HOUSES RECENTLY DISCOVERED IN THE NORTHERN PART OF THE STATE ARE UP TO 120 FEET LONG AND 30 FEET WIDE.<sup>1</sup> SURFACE DISTRIBUTION OF DEBRIS MAY BE INDICATIVE OF STRUCTURES OF SIMILAR SIZE AT THE SCHMEISER SITE. UPON EXCAVATION THE SITE DEPOSIT TURNED OUT TO BE THIN. THE MOST COMMON FEATURE WAS THE STORAGE OR REFUSE FILLED PIT. THESE WERE BASIN SHAPED, SIMILAR TO PITS FOUND IN OTHER EASTERN ONEOTA SITES. UNLIKE OTHER DESCRIBED ONEOTA SITES IN THE REGION, LOCATED ON THE BLUFF TOPS, THE SCHMEISER SITE FLOOD PLAIN LOCATION IS UNIQUE AND THE POSSIBLE IMPLICATIONS OF THIS SETTLEMENT PATTERN HAS NOT YET BEEN ASSESSED. IN OTHER REGIONS, THE GEOGRAPHIC SETTING OF SITES HAS HAD SIGNIFICANT CULTURAL CORRELATES.

SIMILAR TO ONEOTA ASSEMBLAGES WHICH HAVE BEEN ASSESSED ELSEWHERE, THE ONEOTA INHABITANTS OF THE SCHMEISER SITE EVIDENTLY HAD A MIXED HUNTING AND GATHERING ECONOMY IN CONJUNCTION WITH GARDENING. SCAPULA HOES, CHARRED CORN AND BEANS WERE FOUND IN THE SITE EXCAVATIONS ALONG WITH

FAUNAL REMAINS, INCLUDING NUMEROUS DEER, BEAVER AND OTHER SMALL MAMMALS ALONG WITH TURTLES, FISH AND FRESHWATER CLAMS.

AS IS COMMON WITH OTHER ONEOTA SITES FOUND THROUGHOUT THE PRAIRIE PENINSULA, THE SITE IS LOCATED IN A SITUATION WHERE PRAIRIE AND FOREST MEET ALONG MAJOR STREAMS, WHERE FLOOD PLAIN FOREST, UPLAND FOREST AND PRAIRIE JOIN. ALTHOUGH ONEOTA PEOPLES HAVE BEEN CHARACTERIZED AS EXPLOITING A WIDE RANGE OF THEIR ECOTONAL SETTING, JUDGING FROM A PRELIMINARY FAUNAL ANALYSIS FROM THE SITE, THE SCHMEISER INHABITANTS SEEM TO HAVE HAD A STRONG ORIENTATION TOWARDS THE BROAD, MARSHY FLOOD PLAIN WHICH SURROUNDED THEM. JUDGING FROM THE SCARCITY OF EVIDENCE FOR GARDENING COMPARED TO THE PROFUSION OF FAUNAL REMAINS IT MAY BE THAT GARDENING WAS ONLY SUPPLEMENTARY TO OTHER MEANS OF OBTAINING FOOD. THIS MAY WELL BE DUE TO THE FACT THAT GARDENING WAS PROBABLY NOT AS DEPENDABLE IN IOWA AFTER 1250 A.D. AS IT HAD BEEN PREVIOUSLY. THE POSTULATED TIME SPAN FOR THE OCCUPATION OF THE SCHMEISER SITE SPANS THE INCEPTION OF THE NEO-BOREAL PERIOD IS MARKED BY A RATHER SHARP CHANGE IN THE ATMOSPHERIC CIRCULATION WHICH APPEARS TO HAVE TAKEN PLACE AROUND 1300 A.D. THIS PERIOD, WHICH ENDED WITH RECENT CLIMATIC AMELIORATION ABOUT 1880 A.D., HAS ALSO BEEN REFERRED TO AS THE "LITTLE ICE AGES."<sup>2</sup>

THE INTERRELATIONSHIP OF CLIMATIC AND CULTURAL EVENTS IN SOUTHEAST IOWA IS DIFFICULT TO ASSESS, HOWEVER, IT MAY WELL BE THAT THE SCHMEISER ASSEMBLAGE REFLECTS THE CULTURAL READJUSTMENT OF ONEOTA CORN FARMERS TO A WORSENING ENVIRONMENT, THE RESULT BEING AN INCREASING RELIANCE UPON THE WILD FOOD RESOURCES FOUND ON THE BROAD, MARSHY MISSISSIPPI FLOOD PLAIN.

THE SCHMEISER SITE IS PROBABLY CONTEMPORANEOUS WITH A NUMBER OF OTHER EARLY ONEOTA COMPONENTS AND OTHER DIFFERENT PREHISTORIC CULTURES. A VERY FEW FRAGMENTS OF POLISHED RED POTTERY NOT TYPICAL OF ONEOTA HINTS AT POSSIBLE CONNECTIONS WITH CONTEMPORARY CULTURES WHO MADE RED SLIPPED VESSELS AND LIVED TO THE SOUTH IN THE VICINITY OF WHAT IS NOW ST. LOUIS. NO EVIDENCE FOR INTERACTION WITH CONTEMPORARY GROUPS IN THE PLAINS AREA HAS BEEN DISCERNED, AND NO SUPPORT HAS BEEN FOUND FOR THE IDEA WHAT THE DES MOINES RIVER VALLEY AND OTHER WESTERN TRIBUTARIES OF THE MISSISSIPPI MAY HAVE SERVED AS MAIN ARTERIES OF ONEOTA INFLUENCE ON THE PLAINS PERIPHERY. IT HAS BEEN POSTULATED BY OTHER RESEARCHES THAT THE ONEOTA PEOPLES IN THE GRAND RIVER REGION IN MISSOURI MAY HAVE GIVEN RISE TO THE HISTORIC MISSOURI INDIANS. IT HAS ALSO BEEN SUGGESTED THAT PREVIOUSLY KNOWN PREHISTORIC ONEOTA SITES IN IOWA MAY HAVE DEVELOPED INTO THE HISTORIC TRIBAL IOWAY.<sup>3</sup>

LINGUISTICALLY, IOWAY, OTO, AND MISSOURI ARE CLOSELY RELATED; IN FACT, THEY ARE MUTUALLY INTELLIGIBLE DIALECTS OF CHIWERE SIOUX.<sup>4</sup> IN ADDITION, THE IOWAY, OTO AND MISSOURI ARE THE GROUPS WHICH, ACCORDING TO OLD MIGRATION LEGENDS LEFT THE WINNEBAGO, REMAINING TOGETHER FOR A PERIOD OF TIME BEFORE AGAIN SEPARATING INTO THE HISTORICALLY KNOWN TRIBAL UNITS.<sup>5</sup> PROBLEMS OF ONEOTA ORIGINS AND DEVELOPMENTAL INTERRELATIONSHIPS AWAIT FURTHER CLARIFICATION BASED UPON MORE EXTENSIVE EXCAVATION AND REPORTING.

<sup>1</sup>MCKUSICK, MARSHAL 1971 ONEOTA LONGITUDINES, PREHISTORIC INVESTIGATIONS REPORT No. 3, OFFICE OF THE STATE ARCHAEOLOGIST OF IOWA. PP. 86-94.

<sup>2</sup>BAERREIS, DAVID A. AND REID A. BRYSON 1965 CLIMATIC EPISODES AND THE DATING OF THE MISSISSIPPIAN CULTURES. THE WISCONSIN ARCHEOLOGIST. VOL. 46, NO. 4, PP. 203-220. MILWAUKEE.

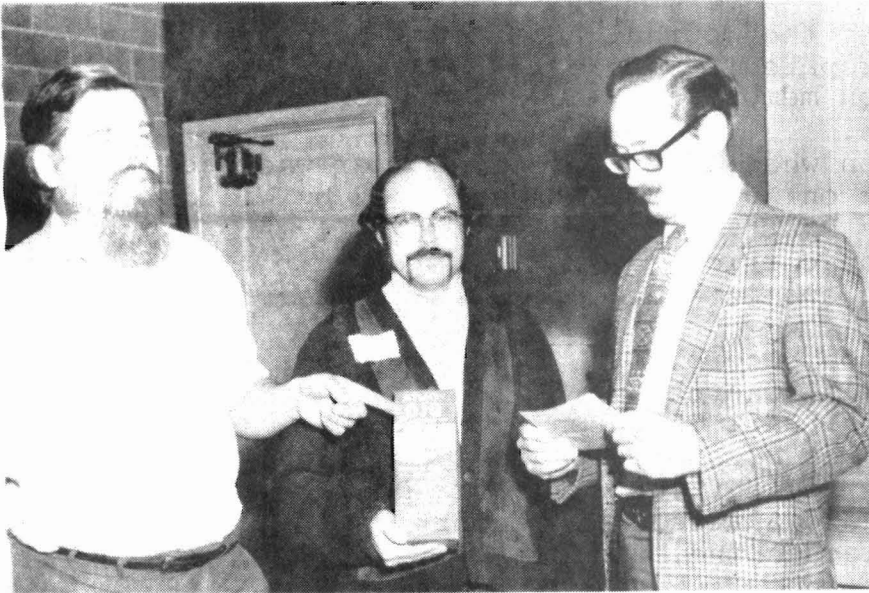
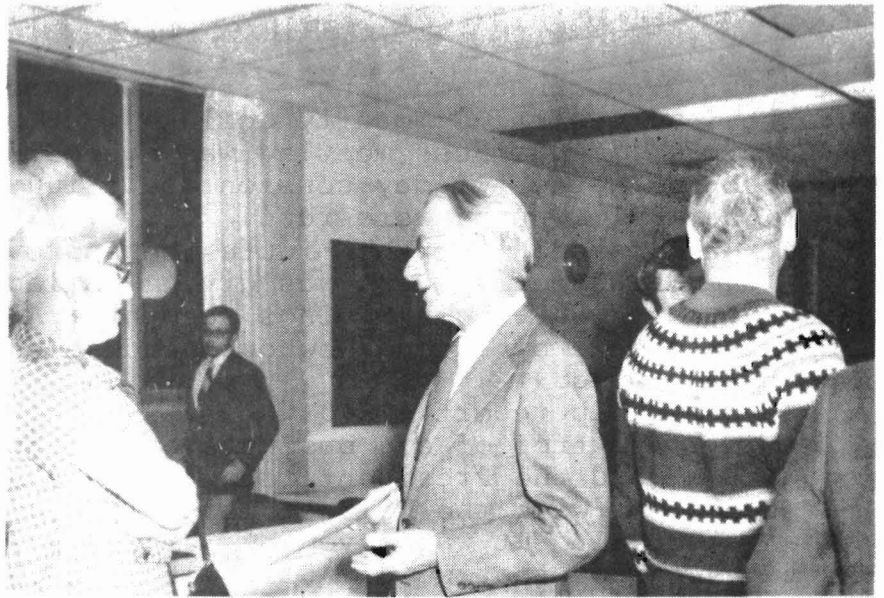
<sup>3</sup>MOTT, MILDRED 1938 IOWA JOURNAL OF HISTORY AND POLITICS. VOL 36, NO. 3, 255.

<sup>4</sup>VOEGELIN, CARL F. 1941 AMERICAN ANTHROPOLOGIST. VOL. 43, NO. 2, 246-249.

<sup>5</sup>DORSEY, J.O. 1886 THE AMERICAN NATURALIST. VOL. 20, NO. 3, 211-222.

22ND. ANNUAL MEETING

DR. DONALD J. LEHMER  
OF DANA COLLEGE  
(PICTURED HERE)  
PRESENTED A SLIDE  
LECTURE ON THE  
"MANDAN-HIDATSA  
CULTURE CLIMAX" AT  
THE ANNUAL BANQUET.



WHEN REX HANSMAN (LEFT)  
AND HOWARD JENSEN (RIGHT)  
OF FORT DODGE FOUND OUT  
THAT DAVID GRADWOHL (CENTER)  
OF IOWA STATE UNIVERSITY  
DID NOT HAVE EXPEDITION  
PLANNED FOR THIS SUMMER,  
THEY PRESENTED HIM WITH A  
"MYSTERY DIG" KIT TO KEEP  
HIM IN PRACTICE.

MARNIE MANDEVILLE OF  
IOWA STATE UNIVERSITY  
PRESENTED A LECTURE ON  
THE HEAT TREATMENT OF  
CHERT TO SOCIETY MEMBERS  
AT THE SATURDAY MEETING.

PHOTOS COURTESY OF  
THE SANFORD MUSEUM



## MINUTES OF THE 22ND. ANNUAL MEETING

APRIL 9, 1972

The 22nd annual meeting of the Iowa Archeological Society met at the Iowa Central Community College, Ft. Dodge April 9, 1972 at 1:00 p.m. The business meeting was opened by President Duane C. Anderson. In the two-day session about 100 attended.

The 1971 minutes were read. Dr. H.P. Field moved, Ray Mittlestadt seconded that the minutes be approved.

The Treasurers report was given - Balance \$187.54 in checking account and \$1505.00 in Savings account. A motion to approve this report was made by Eugene Newhouse and seconded by Herbut Sovereign. Motion approved.

Membership report - 270

In the matter of old business our status with the IRS was brought up and the President reported that after working on it for two years with the help of lawyers we are now awaiting the final approval. It was moved by James Reysack and seconded by Adrian Anderson that we pay \$25.00 to the law firm Maher, Meloy & Hankens of Cherokee, for services over a two year period in helping our Society meet the standards of the State of Iowa in the IRS. The motion carried.

There was a discussion of the Journal and it was announced that Vols. 17 and 18 were being prepared.

There was a discussion on memorials - how do we use the memorial money. No action taken.

There was a discussion on what to do for Dr. Lehmer who had given the talk at the banquet on April 8. It was moved by Willis Cuning and seconded by LeRoy Pratt that we give him a five-year membership honorarium. Motion carried.

The nominating committee submitted the following names for officers:

President: Duane Anderson, Cherokee  
 Vice-president: Joe Beals, Cherokee  
 Secretary-treasurer: Mrs. Phil Thornton, Storm Lake  
 Trustees, 1974-75: Charles Brenner, LeMars  
 Mrs. Ray Mittlestadt, Fort Dodge  
 Richard Slattery, Davenport

Journal Editor: Dr. Dale Henning, Lincoln

Newsletter Editor: Gary and Betsy Valen, Indianola

It was moved by Pat McAlister and seconded by Dr. H.P. Field that this report be accepted - carried. It was moved by David Gradwohl and seconded by Marnie Mandeville that this set of officers be elected. Motion carried.

It was announced that Mt Ayr be the tentative place for the 1973 Annual Meeting. This matter would have to be approved and cleared by the South Central Chapter. A motion by Adrian Anderson and seconded by Ray Mittlestadt that we accept this invitation to Mt. Ayr. Motion carried. Davenport would be the second choice for a meeting place. The President appointed Herb Sovereign as program chairman for the 1973 meeting.

Herb Sovereign gave a report on the Preservations Committee. He had had many communications relating to preserving sites and salvage work. There is an immediate need for survey of sites in Iowa and reporting them.

Willis Cumming moved that the board of trustees decide on the matter of buying a typewriter from Don Spears with memorial money. Adrian Anderson seconded. Motion carried.



Mr. George Horton proposed that Mr. Thomas Royster, Muscantine be given an honorary membership. Richard Coch moved that Mr. Royster be given an honorary membership and Nancy Osborn seconded. Motion carried.

The report from the Resolutions Committee was read by Jim Pilgrim as follows:

1. The Iowa Archaeological Society thanks the host/chapter the Central Iowa Archaeological Society, and its members, especially Rex Hansman, Mr. & Mrs. Mittiestadt and Dave Carlson, for their hard work and hospitality this weekend in making our annual meeting such a great success!
2. The IAS thanks Dr. Donald J. Lehmer for the fine, interesting speech that he presented along with his colored photographic slides at last night's banquet.
3. The IAS extends its regrets to the families of members who have passed away during this past year. Particularly to the wife of Paul D. Kline, a past-president of this society, as well as to the families of Albert E. Newell, Albert Wesley and Francis J. Doller.
4. The Iowa Archeological Society extends its thanks to the Cherokee, Iowa law firm of Maher, Mcloy & Hankens for their hard work the past two years in making this organization a non-profit corporation to which contributions are tax exempt under Internal Revenue Service rules and the State of Iowa.
5. The IAS expresses its regrets at the retirement of Don Spears of Ottumwa from the position of Newsletter Editor and extends profuse thanks to Don for a job well done.

It was moved by Eugene Newhouse and seconded by Dr. H.P. Field that the report be accepted. Motion carried.

The motion for adjournment was made by Pat McAlister and seconded by Dr. H.P. Field. Motion carried. Meeting adjourned.

DEBRIS  
EXCAVATED FROM THE DESK OF THE EDITOR

BOOK REVIEW:

STANLEY A. AHLER, PROJECTILE POINT FORM AND FUNCTION AT RODGERS SHELTER, MISSOURI MISSOURI ARCHAEOLOGICAL SOCIETY RESEARCH SERIES, No. 8, NOVEMBER 1971. PUBLISHED JOINTLY BY THE COLLEGE OF ARTS AND SCIENCES UNIVERSITY OF MISSOURI AT COLUMBIA AND THE MISSOURI ARCHAEOLOGICAL SOCIETY. (PLACE ORDERS WITH THE MISSOURI ARCHAEOLOGICAL SOCIETY, P.O. Box 958, Room 15 SWITZLER HALL, UNIVERSITY OF MISSOURI, COLUMBIA, MISSOURI, 65201) (ED. NOTE: THE PRICE WAS NOT MADE AVAILABLE TO ME)

ALL STUDENTS OF ARCHEOLOGY SHOULD FIND MR. AHLER'S STUDY INTERESTING AND ENLIGHTENING. THE PUBLICATION MAY APPEAR TOO SCHOLARLY OR ACADEMIC FOR THE AMATEUR ON FIRST READING, BUT CAREFUL EXAMINATION REVEALS A WEALTH OF INFORMATION. THE CENTRAL PURPOSE OF THE STUDY IS TO INVESTIGATE THE RELATIONSHIP BETWEEN THE USE AND FORM OF SAMPLE PROJECTILE POINTS COLLECTED AT THE RODGERS SHELTER SITE. IN THE WORDS OF THE AUTHOR:

IT IS OFTEN INFERRED, IF NOT EXPLICITLY STATED, THAT RELATIVE FREQUENCIES OF PARTICULAR PROJECTILE POINT STYLES AT A SITE REFLECT THE APPROXIMATE PERIOD OF OCCUPATION OF THAT SITE AND ITS RELATIVE INTENSITY OF USE BY DISTINCT GROUPS OF PEOPLE HAVING DIFFERENT MENTAL PROJECTILE POINT TEMPLATES. . . . IT IS RARE WHEN AN INVESTIGATOR SUGGESTS THAT THE DIVERSITY OF PROJECTILE POINT FORM MAY IN FACT HAVE SOMETHING TO DO WITH DIFFERENTIAL EXPLOITATION OF THE ENVIRONMENT.

THE AUTHOR TESTED TWO HYPOTHESES IN ORDER TO PROVE THAT PROJECTILE POINTS MUST BE EXAMINED FOR USE AND ~~FUNCTION~~ IN ADDITION TO THE TRADITIONAL STYLE ANALYSIS. HE PROPOSED:

1. "WITHIN A SPECIFIC SAMPLE OF A SINGLE FORMAL CLASS, 'PROJECTILE POINT', THERE ARE MULTIPLE FUNCTIONAL CLASSES OF TOOLS,"
2. "IN CERTAIN INSTANCES, DISTINCT PROJECTILE POINT CLASSES DEFINED ON PURELY FORMAL GROUNDS REPRESENT DISTINCT FUNCTIONAL CLASSES AS WELL."

THE PUBLICATION HAS NUMEROUS ILLUSTRATIONS AND PHOTOGRAPHS. IT IS READABLE AND SHOULD BE UNDERSTANDABLE TO ANYONE FAMILIAR WITH ARCHEOLOGICAL TERMS AND DEFINITIONS. THE BOOK SHOULD PROVIDE NEW INSIGHTS INTO YOUR OWN ARCHEOLOGICAL DISCOVERIES.

-----

WE ATTENDED A PICNIC HELD BY THE SOUTHEASTERN CHAPTER AT ELDON, IOWA ON JUNE 18. WE WERE IMPRESSED WITH THE FRIENDSHIP AND SPIRIT OF THIS GROUP. THANKS AGAIN FOR THE GOOD FOOD AND TIMES!

WE TRAVELED WITH DON SPEARS TO IOWA FALLS ON JUNE 24 TO INVESTIGATE THE REPORT THAT AN INTERSTATE HIGHWAY WOULD DESTROY NUMEROUS SITES IN HARDIN COUNTY. HERB SOVEREIGN ALSO ATTENDED THIS MEETING. JIM REYSACK GAVE US A TOUR OF THE AREA AND POINTED OUT SOME OF THE THREATENED SITES. WHILE THE DAY WAS ENJOYABLE FOR US, THE PURPOSE OF OUR VISIT WAS SERIOUS. THE PROPOSED INTERSTATE ROUTE WOULD DESTROY SEVERAL MOUND GROUPS, VILLAGE SITES, AND CONSIDERABLE RECREATION AND WILDLIFE AREAS OF HARDIN COUNTY. WE WILL RUN AN ARTICLE IN THE FALL ISSUE WITH PHOTOGRAPHS AND MORE COMPLETE DETAILS. THERE MAY BE A NEED TO ASK THE SOCIETY TO SUPPORT AN ALTERNATIVE ROUTE WHICH THE HARDIN COUNTY CONSERVATION BOARD HAS SUGGESTED TO THE HIGHWAY COMMISSION. WE WILL KEEP YOU INFORMED.

THE FALL ISSUE OF THE NEWSLETTER WILL BE DEVOTED TO SITE PRESERVATION. WE WILL ASK MANY OF YOU TO SUBMIT INFORMATION AND OPINIONS ON THIS SUBJECT, BUT WE WELCOME MATERIAL FROM ANYONE. IF YOU HAVE ANY QUESTIONS ABOUT SITE PRESERVATION, CONTACT US SOON AND WE WILL ATTEMPT TO FIND AN ANSWER BY THE OCTOBER PUBLICATION DATE.

THE NORTHWEST CHAPTER TOOK A FIELD TRIP TO TURIN (13MN2) FOR THE PURPOSE OF COLLECTING FOSSILS FROM THE GRAVEL PITS. SEVERAL HORSE BONES, IDENTIFIABLE FRAGMENTS AND SPLINTERS WERE RECOVERED.

THE NORTHWEST CHAPTER ALSO REPORTS THAT SALVAGE EXCAVATIONS WERE CONDUCTED AT THE ROCK CREEK OSSUARY (13PM65). DALE JENNESS MADE THE FIND OF THE DAY WHEN HE UNCOVERED A SMALL CATLINITE EFFIGY PENDANT RESEMBLING A BADGER-LIKE ANIMAL. NUMEROUS BONE FRAGMENTS WERE RECOVERED AND ONE VERTEBRA WAS FOUND WITH A SMALL SIDE-NOTCHED PROJECTILE POINT IMBEDDED IN IT. WORK WAS NOT FINISHED AT THE SITE AND SOME MORE TESTING IS NECESSARY.

BURY MY HEART AT WOUNDED KNEE, BY DEE BROWN, IS NOW AVAILABLE IN PAPERBACK FROM BANTAM BOOKS (\$1.95). IT SHOULD BE REQUIRED READING FOR ALL CITIZENS OF THE UNITED STATES AND ESPECIALLY THOSE INTERESTED IN INDIAN LIFE AND CULTURE.

WE NEED TO HEAR FROM YOU. YOUR SUGGESTIONS, CRITICISMS, COMMENTS, AND INFORMATION ARE ALWAYS WELCOME. WHY NOT WRITE AN ARTICLE ABOUT YOUR OWN ARCHEOLOGICAL RESEARCH? DON'T WORRY ABOUT STYLE IF YOU ARE NOT A PROFESSIONAL WRITER—THAT'S THE JOB OF THE EDITOR—WE NEED YOUR INFORMATION.

**THE MISSOURI ARCHAEOLOGICAL SOCIETY**

The Missouri Archaeological Society, a scientific Not-For-Profit organization, has as its purpose the preservation of the remains of prehistoric peoples of Missouri, scientific study of these remains, and publication of information about them. Many scientists are members, of course, but people without academic training in archaeology and related fields are invited to membership. An interest in the Society aims and payment of dues are the only requirements.

**PUBLICATIONS**

The **Missouri Archaeologist**—the published bulletin of the Society (at least once a year) containing articles and reports on archaeology in Missouri and the Midwest. The **Newsletter**—published ten times each year, January through June and September through December, and devoted to the dissemination of current information about regional archaeology, archaeological research in Missouri, chapter activities, announcements of field trips, surveys, and other items of interest.

The **Memoir Series** and the **Research Series**—published irregularly and containing reports of archaeological research. Back issues are available.

**MEMBERSHIP**

Membership is divided into several classes to satisfy the needs of various members. Active and Associate members receive the **Missouri Archaeologist** and the **Newsletter**. All other classes of membership receive all publications of the Society including the **Memoir** and **Research Series**.

Membership applications, payment of annual dues, or change of address can be reported on this page. Please be sure that your name and address are **CLEARLY** entered and that the checkmarks are in the applicable blanks.

- .....New Membership
- .....Payment of Annual dues (Year .....
- .....Change of Address..... effective date

NAME ..... DATE .....

MAILING ADDRESS .....

CITY ..... STATE ..... ZIP .....

.....Benefactor . . . . .	\$1000.00
.....Sustaining . . . . .	500.00
.....Life . . . . .	100.00
.....Contributing . . . . .	25.00
.....Supporting . . . . .	10.00
.....Institutional . . . . .	7.50
.....Participating . . . . .	7.50
.....Active . . . . .	4.50
.....Associate (for those under 18 years) . . . . .	3.00

ADDRESS ALL COMMUNICATIONS TO: Missouri Archaeological Society, P.O. Box 958, Room 15 Switzler Hall, University of Missouri, Columbia, Missouri 65201

N E W M E M B E R S

ACTIVE

ROBERT TIMBERLAKE	BEDFORD	MRS W. W. DIEHL	INDIANOLA
HUGH RIGLIN	ACKLEY	JAMES BOYLAN	IOWA CITY
PAT McALLISTER	CHEROKEE	DAVID BALLARD	AMES
J. THOMAS LEE	HUMBOLDT	KEN CUTTS	OTTUMWA
STEPHEN KALLESTAD	LAKE MILLS	JEFF FLENNIKEN	AMES
HANS GLISSMAN	DES MOINES	DONALD J. LEHMER	BLAIR, NEBRASKA
MR. & MRS HARRY PRICE	BLOOMFIELD	EARL CARMICHAEL	PICKERING, Mo.

INSTITUTIONAL

US ARMY ENGINEERS LIBRARY

KANSAS CITY, MISSOURI

HONORARY

THOMAS ROYSTER

MUSCATINE

I A S M E M B E R S H I P S

ACTIVE.....\$4.00  
 INSTITUTIONAL.....\$4.00  
 SUSTAINING.....\$10.00  
 LIFE.....\$50.00

SEND CHECK OR MONEY ORDER TO:  
 RUTH THORNTON  
 I A S SECRETARY-TREASURER  
 326 OTSEGO STREET  
 STORM LAKE, IOWA 50588

IOWA ARCHEOLOGICAL SOCIETY  
 OFFICE OF THE NEWSLETTER EDITOR  
 GARY AND BETSY VALEN  
 R.R. 3  
 INDIANOLA, IOWA 50125

ADDRESS CORRECTION REQUESTED

Non-Profit Organization

<b>BULK RATE</b>
U. S. Postage
<b>PAID</b>
Permit No. 200
Ottumwa, Iowa



ADRIAN D. ANDERSON  
 1414 PLUM ST.  
 IOWA CITY, IOWA 52240