

Official Publication of
Mid-America Paleontology Society

Volume 26, Number 9
December 2003



MARK YOUR CALENDARS

Jan 10: MAPS MEETING

Trowbridge Hall, University of Iowa, 123 N. Capital St. Iowa City, IA. Main Lecture Room, #125.

1:00 Board and General meeting

2:00 Program: "Jane" the Dinosaur, presented by Michael Henderson, Director of Earth Sciences from the Burpee Museum in Rockford, Illinois

<http://www.burpee.org/janeteam.htm>

<http://www.burpee.org/index.htm>

Feb 14: MAPS MEETING

Trowbridge Hall, University of Iowa, 123 N. Capital St. Iowa City, IA. Main Lecture Room, #125.

1:00 Board and General meeting

2:00 Program: "Herbarium Specimens: A Vital Link to the Natural World" presented by Diana Horton - curator of the vascular plant and bryophyte portion of the herbarium.

The University of Iowa herbarium is a repository for dried and fossil plant specimens from all over the world but the primary focus is Iowa and North America. There are approximately 175,000 collections of vascular plants, 80,000 bryophytes and 5000 fossils. This herbarium is larger than 92% of nearly 600 herbaria in the U.S. and houses the only major collection of bryophytes and fossil plants in the state. We will be allowed to look at the collection, which is in danger of being moved from Iowa City due to budget cuts. Iowa is not alone in facing the threat to university natural science collections - the chancellor at the University of Nebraska has announced the elimination of several collections and all research divisions at the state museum (and, yes, it did affect their paleontology department). For an update on another threat to our hobby and a chance to see a great fossil plant collection - be sure to attend.

<http://www.cgrer.uiowa.edu/herbarium>

<http://www.aibs.org/biosciencelibrary/vol53/jun03ww.html>

Mar 26-28, 2004: MAPS NATIONAL FOSSIL EXPOSITION

**XXVI - Paleo Techniques: Discover, Develop, Display
Western Illinois University, Western Hall, Macomb, IL**

Fri., Mar 26 8 am - 5 pm—Keynote Speaker, Neal Larson @ 7:30

Sat., Mar 27 8 am - 5 pm—Meeting & Live Auction @ 7:00

Sun., Mar 29 8 am - 12 noon

Information is in this issue.

2003/12 DUES ARE DUE

Are your dues due? You can tell by checking your mailing label. It reflects dues received by December 23. The top line gives the expiration date in the form of "year" followed by "month" - 2003/12 means 2003/December. Dues cover the issue of the Digest for the month in which they expire. We do not send notices but will let you know if you are overdue by highlighting your mailing label and stamping your Digest. We carry overdues for two issues before dropping them from our mailing list.

Please include on your check your due date and name exactly as it appears on your mailing label - or include a label.

Dues are \$20 per U.S./Canadian household per year. Overseas members may choose the \$20 fee to receive the Digest by surface mail or a \$30 fee to receive it by air mail. (Please send a check drawn on a United States bank in US funds; US currency; a money order; or a check drawn on an International bank in your currency.) Library/Institution fee is \$25.

Make check payable to MAPS and mail to:

Sharon Sonnleitner, Treas.

4800 Sunset Dr. SW

Cedar Rapids, IA 52404

ABOUT THE COVER

Sent by Bruce Stinchcomb

Bruce Stinchcomb sent this month's cover photo of *Tentaculites*.

These are problematic cone-shaped fossils from the Devonian Cedar Valley limestone of central Iowa.

PLEASE ADD THE FOLLOWING NEW MEMBER TO YOUR DIRECTORY:

<p>Tiffany Adrain Paleontology Repository Dept. of Geo science 121 TH, The University of Iowa Iowa City, IA 52242</p>	<p>Collections Manager, Paleontology. Interested in collections management; fossil plants. Will not trade. Wants to continue the relationship between the Geoscience Department and MAPS, and takes great interest in MAPS activities and the promotion of fossils.</p>
---	---

REMINDER: 2004 EXPO TO MOVE TO WESTERN HALL (WIU GYM)

MAPS Expo will move from the Union at Western Illinois University to Western Hall for the 2004 show. Several factors influenced our decision to move the show: the Gym is 234' x 116' while the Union is 146' x 74'; wiring and lighting are better at the Gym; the Gym offers ground floor unloading and free parking; the auction and programs can be held in an adjoining ground floor room; and there is a food stand in the adjoining room.

Please pass the word to anyone you know who attends Expo. The Union will advertise the change with an electronic sign during at the Union during the show.

As a result of the move, the table limit will be raised to TEN per membership. The table fee will be \$15 for the first two tables and \$30 for each additional table up to the limit of ten.

FROM THE UNIVERSITY OF IOWA DEPARTMENT OF GEOSCIENCE

(MAPS meets at the U. of Iowa. Tiffany Adrain and Julie Golden, retired curator of the Repository, are working on a fossil guidebook for children, to be funded with money from the David Jones grant)

December 5, 2003

Dear Sharon and MAPS Members,

Thank you so much for your very kind and generous donation of \$250 to the A. O. Thomas Memorial Fund. Your contribution will enhance the Fund greatly. As you are probably aware, the fund was set up soon after Thomas's death in 1931 and is primarily intended for the purchase of rare and needed fossils and Paleontological literature for the use of the Department. I will keep you up to date with any purchases we make in the future.

....Thank you once again for your donation.

Best wishes,
Tiffany Adrain
Collections Manager, Paleontology Repository

ADVERTISING SECTION

Ads are \$5.00 per inch. Send information and checks payable to MAPS to : Mrs. Gerry Norris, 2623 34th Avenue Ct., Rock Island, IL 61201. Phone: (309) 786-6505 This space is a \$5.00 size. To extend currently running ads, please send request and remittance to Editor by the 15th of the month. We do not bill. Ads do not run in the EXPO issue (March). Ads can be printed in different sizes of type to fit a 1" space.

Fossils

Rare Specimens -- Unusual Localities

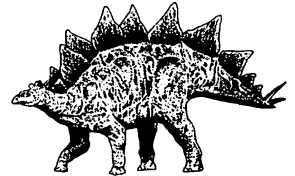
Spectacular illustrated catalog! 64 pages packed with over 1000 photos of the world's most unusual and exotic fossil animals and plants-- many found nowhere else. Everything from dinosaurs to fossil flowers. If you don't have it you are missing out!

Catalog #11 -- \$6.00

The Natural Canvas

Extraordinary Fossils and Artwork

1419 Speers Avenue E-Mail: ncanvas@aol.com
San Mateo, CA 94403 TEL: (650) 638-2512
www.thenaturalcanvas.com



100s of Replica Fossils & Models



www.PaleoClones.com
1-800-822-6788

PREHISTORIC
PLANET store

The Museum Where You Can Purchase Every Exhibit™

Weeks Formation House Range, Utah

by Marc Behrendt

originally published in "Fossil News - Journal of Avocational Paleontology," 9/03.

Out in the desert hills of the House Range in western Utah lies a formation unique to the area. The trilobite fauna collected from this area is diverse and ranges from the fantastic to the ubiquitous. The matrix is famous for its coloration. It is a favorite of many collectors. It is the Weeks Formation.

The Weeks Formation is an Upper Cambrian unit found solely in the House Range of Utah. The exposed layers occur as isolated pockets around the Marjum Pass with the most notable exposure being in North Canyon, which was previously known as Weeks Canyon. The Weeks Formation lies directly above the Middle Cambrian Marjum Formation and lies directly beneath the Big Horse Limestone Member of the Orr Formation. Charles Walcott in 1903 and 1905 was the first to investigate the Weeks, including the quarry that most collectors are familiar.

The bottom layer of the Weeks Formation, ranging from 30 – 80 meters thick, is a black mudstone. Lamination (layering or thin bedding planes) alternates between mud-rich and mud-poor sedimentation. Fragments of trilobites and echinoderms are rare, though burrows may be seen. In some sections, bedding may be indistinct or absent.

These layers may have an occasional shale layer that may contain rare complete agnostid trilobites or sponge spicules. Likely, this was a deep water, low energy environment.

The following rock types alternate through the Weeks above the bottom layer. The skeletal-wackestone (mud-supported) and packstone (grain-supported) lithofacies range from well-laminated to bioturbated to homogeneous (no bedding planes). When exposed to the weather this rock will turn a reddish color. Sponge spicules are common, lingulid brachiopods, trilobites and echinoderms are present. This rock was deposited in a typical open ocean or subtidal environment.

The Peloidal-packstone and grainstone lithofacies is a thinly laminated to moderately homogeneous rock containing fragmented trilobites and echinoderms. Freshly exposed dark grey rock turns to a light grey or orange color upon weathering. Lingulid brachiopods and rarely trilobites may be found on bedding surfaces. These sediments were deposited on a marine shelf where the depositional environment fluctuated between high and low energy.

The Ooid-grainstone lithofacies section is dark grey on a fresh surface and weathers to a mottled orange and grey. This unit, when found, is only about 3 meters thick. Fragmented fossils are uncommon. It was likely a shallow higher-energy environment than the other lithofacies. Occasionally, a bedding plane may contain ripples.

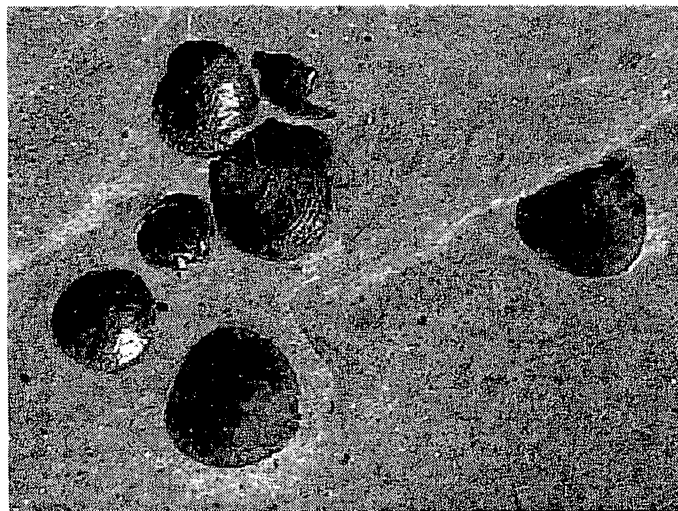
The silty lime-mudstone lithofacies is a major constituent rock of the Weeks Formation. Limey mudstone beds are 1-2 cm thick and when freshly exposed are medium grey with orange bedding layers. Weathered rock turns to a dull reddish orange. Lingulid brachiopods are common on the bedding surfaces and trilobites are uncommon. These sediments were deposited in a shallow, restricted shelf area that periodically yielded poor living conditions. Occasionally, a bedding layer will yield many trilobites, but generally organisms were not numerous. BeeBe (1990) has suggested that the environment periodically experienced hypersalinic events. This is the facies that collectors are most familiar with.

Barren lime-mudstone lithofacies consisted of 2-4 cm thick beds separated by reddish bedding planes. Burrows are evident in this rock; fossil fragments are very rare suggesting this was a shallow, low energy and stressed environment.

The lowest 30 meters of the Weeks Formation contains a distinctly different fauna than the upper sections. Agnostids are the sole trilobite

representatives, including *Lejopyge* and *Ptychagnostus*. Sponge spicules may be common. Polymeroid trilobites are not found.

The upper levels contain some agnostid species but polymeroid trilobites are the predominant form. Also found are the aglaspid *Beckwithia tya* and an undetermined echinoderm. Inarticulate brachiopods are not found in the first 60 meters of the Weeks, but may be quite common in most of the above layers.

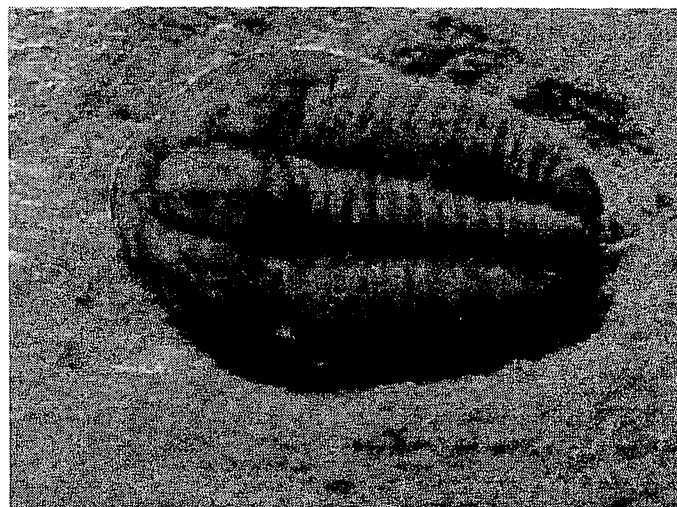


Inarticulate brachiopod Acrothele sp.

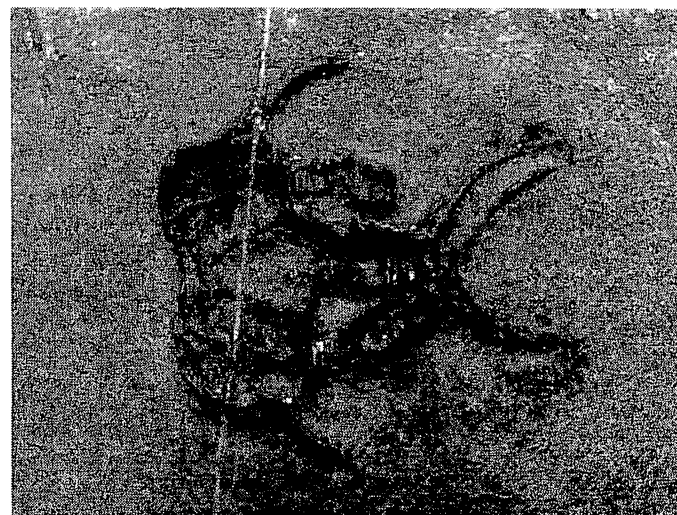
Collecting in the Weeks Formation is not difficult. The rock is hard and thick but lies in flat even layers that split easily with a hammer and chisel. Fossils are not exposed on a fresh surface, but usually remain under a layer of matrix requiring close examination. The collector must tilt the rock so shadows form, and then examine each and every shadow and suspicious lump. Some of the trilobites are very tiny; some are large, so one never is sure what to look for. However, the work is well worth it! When prepared, the trilobites are often complete with thick, beautiful caramel-brown shell. At times, a trilobite impression will have no shell present, so one must be prepared for some duds.

The most common of the trilobites at the Walcott quarry is *Cedaria*, followed by *Densonella*, *Modocia*, *Menomonina*, *Dresbachia*, *Weeksina*, *Democephalus*, and *Tricrepicephalus*. Among the rarest of the trilobites are *Olenoides*, *Chiasmacantha*, *Maryvillia*, *Meteoraspis*, *Norwoodia*, *Selenocoryphe*, plus a small host of agnostid trilobites. Other species are known, but only from a few specimens. Non-trilobite fauna

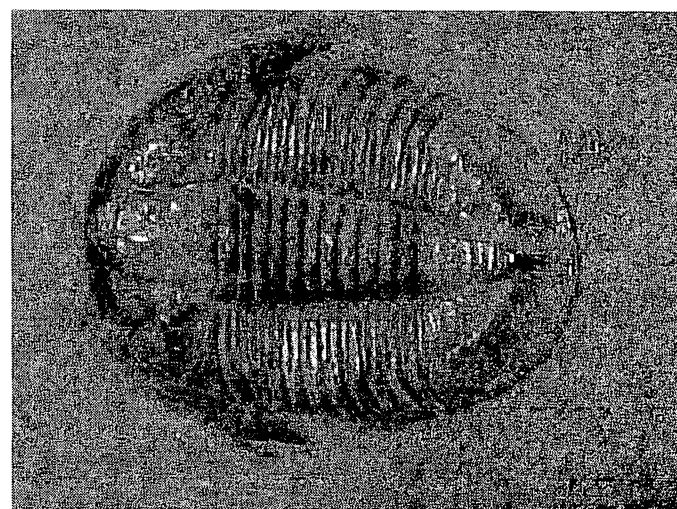
include the aglaspid *Beckwithia*, brachiopods, and soft body animals.



Modocia hewlisca (11 mm)
a common constituent of the Weeks Fm.

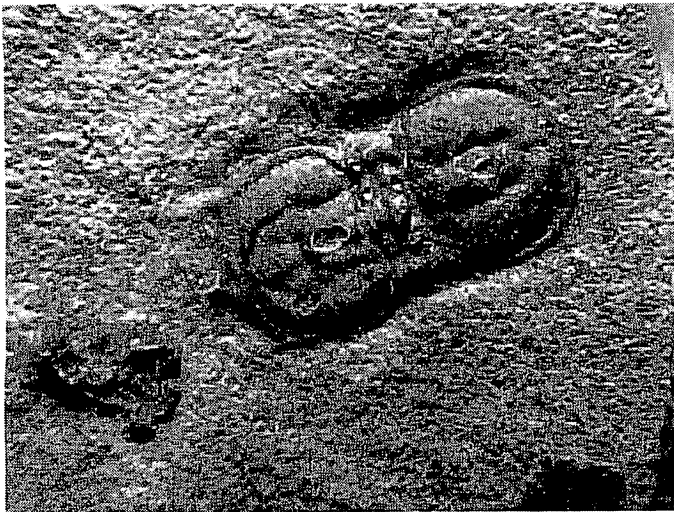


Rare trilobite Chiasmacantha ceratops (25 mm)

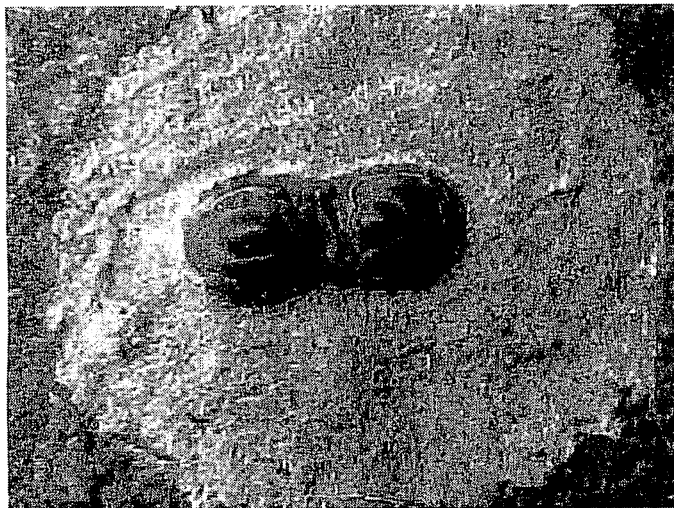


Selenecoryphe sp. (16 mm)

Agnostid trilobites, among the rarest of the Walcott quarry fauna, were known only from a few complete specimens and several fragments. Recently, 3 of the species from the Weeks - *Triadaspis*, *Ammagnostus*, and *Proagnostus*, were found in a new Weeks Formation exposure locality. Complete *Lejopyge* are exceptionally rare, though a hash layer of fragmented *Lejopyge* specimens can be found at the base of the Weeks Formation.



Triadaspis bigernis (5 mm)



Rare complete *Lejopyge* calva

Recently, a private group is leasing and quarrying the famous Walcott quarry for its lovely reddish-brown shale and selling the rock as patio stone! The Bureau of Land Management who manages this public land, does not allow commercial collecting of fossils. However, a local BLM representative stated that since this quarry is mining only the rock and not the fossils, there is no reason to stop their operation! The BLM was unimpressed that historically, the site has been a paleontological site since Walcott discovered and worked it up in the early 1900s. Throughout our discussion, the BLM employee continued to remind me, the quarry outfit is only taking the rock, not the fossils!

Collecting the Weeks formation fossils can be astonishingly fantastic or agonizingly frustrating. The quarry operation has made collecting difficult at times, but when the opportunity allows itself, a day can pass very quickly while splitting limestone and searching for the shadowy impressions of the Upper Cambrian's marine denizens.

(Acknowledgement: I thank Ron Rea for his knowledge and guidance as I tried to define Dr. Walcott's geological terminology. I also thank Ken Karns and Shanan Peters for their suggestions and advice)

References:

Beebe, Matthew, May 1990, *Trilobite Faunas and Depositional Environments of the Weeks Formation (Cambrian)*, Utah, University of Kansas, 111 pages.

Plummer, Charles C. and McGeary, 1988, David, *Physical Geology*, Wm. C. Brown Publishers, 535 pages.

Bentley, C.B., 1958, Upper Cambrian Stratigraphy of Western Utah. Brigham Young University Research Studies. Geology Series, 70 pages.

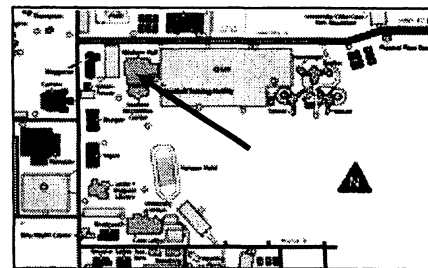
NATIONAL FOSSIL EXPOSITION XXV—2004

LOCATION AND TIME EXPO will be held in the gym at Western Hall, on the campus of Western Illinois University, Macomb, Illinois.

The simplest way to the site is to turn off IL 67 west onto University Drive. (Follow the signs.) Set-up is permitted on Friday, March 26, at 8:00 a.m.

EXPO HOURS: Friday, March 26—8:00 a.m. - 5:00 p.m.
 Saturday, March 27—8:00 a.m. - 5:00 p.m.
 Sunday, March 28—8:00 a.m. - 12:00 p.m.

(We encourage exhibitors to stay until noon on Sunday, but many leave early.)



TRANSPORTATION There are 2 highways leading into Macomb—IL 136, an E-W route, and IL 67, a N-S route. There is **no plane service to Macomb** at this time, but you can fly into **Moline, IL, St. Louis, MO, or Peoria, IL**, and rent a car and drive to Macomb.

LODGING Macomb area code—309; Macomb zip code—61455

★ **MOTELS** We have been informed that most Macomb motels have different prices for weekends than for weekdays, so check prices if you are concerned about costs.

Motels are listed according to what has generally been the highest-priced one to the lowest-priced one except those marked*. It has been reported that some of the hotels raise the price for EXPO weekend, so you might want to check prices.

Ameri Host	1646 N. Lafayette	837-2220
Holiday Inn Express	1655 Jackson St.	816-6700
Macomb Inn (Days Inn)	1400 N. Lafayette	833-5511
Super 8	313 University Drive	836-8888
Pineapple Inn	204 Jefferson Street	837-1914
Travel Inn	Hwy 136 West	833-4521
Star Motel	Hwys 67 S and 136 E	837-4817
	1507 E. Jackson Rd.	
Brockway House (Bed & Bkfst)	331 E. Carrol	837-2175*

If you plan to stay in a motel, we urge you to make your reservations early.
 Local motels are generally filled during the weekends.

★ **CAMPERS** Persons traveling in self-contained camping units may park on the parking lot. See Public Safety located in the Union. **IDENTIFY WITH MAPS**

★ **MOBILE HOME PARKING** is offered at **TILL JORDAN MEADOW MOBILE PARK** by calling **309-837-2883**, for those who wish utility hook-up.

★ **UNION**—Contact **Gilbert Norris (309-786-6505; gilnorris@mchsi.com)**, 2623 34th Ave. Ct., Rock Island, IL 61201 to see if rooms are available. (There are a limited number.) Rooms are to be paid directly to the University Union when you check in or out.

These rooms must be rented for both Friday & Saturday. You must request rooms early. You may wish to be on standby. (The Union rooms may not be as convenient as in the past because the 2004 show has moved from the Union to Western Hall.)

★ **OLSON HALL**—Dormitory-style housing is available at the University in Olson Hall—Dorm rooms with community bath on floor. **CONTACT THE UNIVERSITY directly at 309-298-3500 for reservations.**

IN ALL CASES, IDENTIFY WITH MAPS

PARKING Parking at Western Hall will be free in a designated area. For those staying in the Union, parking at the Union is east of the Union with room permits.

MEALS There will be a food stand in a room adjoining the Gym. Meals are also available in the Union: fast food in the LOWER level and a deli in the basement. Ice cream is also available. There are many restaurants in town and a deli bar in a nearby grocery store.

EXPO REGULATIONS Everyone is requested to make advance table registration by February 15, 2004. Mark your calendars now so you don't forget! Registration forms for your requests for tables, etc., are found on page 8 in the Digest. Send these forms and your check or money order made payable to MAPS to: **Marc Behrendt, 421 S. Columbus St., Somerset, OH 43783. Admission to the show is free.** Please send dues to Treasurer before EXPO. If you do pay at Expo, please be sure your dues payment is recorded before you leave the desk.

ALL TABLES WILL BE ASSIGNED Cost of the tables is \$15.00 each for the first two 6' tables rented for the weekend; Additional tables will cost \$30.00 each. **MAXIMUM of 10 tables per person/membership.** MAPS memberships will have first chance at all tables requested before February 15.

- **EVERYONE IS EXPECTED TO STAY THROUGH 5:00 SATURDAY, and all are encouraged to stay part of Sunday.**
- **PLEASE NOTE YOUR PLANS FOR LEAVING ON THE RESERVATION FORM.**
- **THE COMMITTEE INSISTS THAT ALL MATERIALS BE FOSSIL OR FOSSIL-RELATED. Mountings, gemstones, minerals, Indian artifacts, etc., are not permitted!**
- **PLEASE BE SURE ALL YOUR MATERIAL IS LEGAL.**
- **AISLES MUST BE KEPT CLEAR AT ALL TIMES.**

DISPLAYS Displays are welcome at the show. Please note any displays you are bringing on the registration form.

ALL RESERVATIONS WILL BE ACKNOWLEDGED

OTHER ACTIVITIES PALEO TECHNIQUES: DISCOVER, DEVELOP, DISPLAY will be this year's theme. Friday night's Keynote Speaker will be Neal Larson. His program will be on some aspect of our theme.

Saturday evening, a live auction will follow a short business meeting and awards presentation. Silent auctions will be held Friday afternoon and Saturday. Proceeds from the auctions go to paleontology scholarships.

Each dealer is encouraged to contribute a specimen/specimens equal to or greater than the cost of the tables he/she has rented in order to assure consideration for table space at the next EXPO. Include full data and the name of the fossil donor. Specimens can be left at the information desk up to 3:00 p.m. Saturday. If you wish to mail a specimen, send it with pertinent information to Randy Faerber, 7854 Darnell St., Lenexa, KS 66216-3704. Randy will send a postal acknowledgment on receipt of the specimen.

Show Chairman.....Gil Norris, 2623 34th Avenue Court, Rock Island, IL 6120gilnoris@mchsi.com (309) 786-6505
 Co-Chairman.....Karl Stuekerjuergen, 1503 265th Ave., West Point, IA 52656-9209.....karstuek@interl.net..... (319) 837-6690
 Table Reservations.....Marc Behrendt, 421 S. Columbus St., Somerset, OH 43783fossilprep@aol.com (740) 743-2818
 AuctionRandy Faerber, 7854 Darnell St., Lenexa, KS 66216-3704randy.a.ferber@mail.sprint.com.. (913) 268-6786
 Publicity.....David J. Kaplan, Ph.D., 11729 15 Mile Road, 2B, Sterling Hts., MI 48312 (810) 268-6578
 Publicity Asst.....Tom Witherspoon, 6611 Miller Road, Dearborn, MI 48126-5900 (313) 582-3139
 Expo *Digest* EditorKathleen Morner, 7205 Ticonderoga Rd. NE, Albuquerque, NM 87109 (505) 796-9198
 MAPS Web Site..... <http://midamericapaleo.tripod.com>

EXPO AUCTION INFORMATION

A live auction will be held on Saturday evening of EXPO, following a brief business meeting and awards presentation. Also, during show hours, a silent auction will be held to shorten the live auction. As part of your table fees, you are **encouraged** to donate a correctly labeled, quality fossil(s) or fossil-related item(s) to the Auction. Information to include with the specimen is as follows:

- Brief description and common name, species information, location, and time period.
- A minimum guide to the value of your donation would be something equal to your table fee. In other words, if you have one table, the donation should have a minimum value of \$15; two tables, \$30; and so on.

Preference on future table assignments will be given to those who make a donation to the auction as suggested above.

Most proceeds from the auction go to the Paleontological Society Scholarship Fund. As an interesting note, a number of Auction donations are made by individuals who do not have tables, or who are unable to attend EXPO or the Auction.

The many generous donations in preceding years have allowed us to contribute approximately \$3500 for each of the past several years. Our primary support goes to the Paleontological Society for scholarships and the Strimple fund, with additional support to the Paleontological Research Institute (PRI), and the Repository at the University of Iowa, which hosts MAPS board meetings. With continued membership support, we hope to continue the trend.

NATIONAL FOSSIL EXPO XXVI—REGISTRATION FORM

PLEASE COMPLETE THE FORM BELOW, ENCLOSE IT WITH A CHECK OR MONEY ORDER PAYABLE TO **MAPS**, AND MAIL TO **MARC BEHRENDT, 421 S. COLUMBUS ST., SOMERSET, OH 43783**.

- The floor plan will be first laid out on **February 15**, with all received requests being assigned tables. Thereafter, tables will be assigned on a first come/first served basis. This is necessary to insure fairness to all registrants, and to determine remaining number of tables.
- Registrations with special requests (e.g. same as last year, next to John Doe, etc.) must be received by **February 15** to be honored. Special requests received after Feb. 15 will be honored if possible, but cannot be promised.
- If a request is made to be next to a friend or family member, all the involved people must have their payments and registrations in by **February 15** to be honored. For example, if 4 members wish to be clumped in a group, 3 turn in registrations and the 4th does not, the 4th person may not be set up with the grouping, if the tables are used up. (Of course, every effort WILL be made to keep the 4 members together.)
- If Western Hall fills to capacity, a waiting list shall be created. As cancellations occur, the tables will be assigned in the order received.
- A maximum of 10 tables can be reserved per person, organization, or membership. Tables are 6' long.

2004 EXPO RESERVATION

NUMBER (Up to 2) OF TABLES REQUESTED _____ (@ \$15 PER TABLE = _____)

NUMBER (3 to 10) OF TABLES REQUESTED _____ (@ \$30 PER TABLE = _____)

AMOUNT PAID _____

Payable by **CHECK OR MONEY ORDER** to "MAPS"-- Money must be in the form of a check or money order, to insure proof of payment.

Name _____

Address _____

State and Zip _____ Email _____ Telephone (____) _____ - _____

Special requests _____

CHECK ONE: I will be leaving at 5:00 Saturday or later. I will be leaving before 5:00 on Saturday.

_____ I will be bringing _____ feet of display (No Charge)

_____ Yes, I will help at the Front Desk: Fri. _____ am _____ pm; Sat. _____ am _____ pm; Sun. _____ am _____ pm

NO ONE EXCEPT THE GUARD IS ALLOWED ON THE FLOOR FOR ANY REASON AFTER HOURS!

The Mid America Paleontology Society (MAPS) was formed to promote popular interest in the subject of paleontology; to encourage the proper collecting, study, preparation, and display of fossil material; and to assist other individuals, groups, and institutions interested in the various aspects of paleontology. It is a non profit society incorporated under the laws of the State of Iowa.

Membership in MAPS is open to anyone, anywhere who is sincerely interested in fossils and the aims of the Society.

Membership fee: \$20.00 per household covers one year's issues of DIGESTS. For new members and those who renew more than 3 issues past their due date, the year begins with the first available issue. Institution or Library fee is \$25.00. Overseas fee is \$20.00 with Surface Mailing of DIGESTS OR \$30.00 with Air Mailing of DIGESTS. (Payments other than those stated will be pro rated over the 9 yearly issues.)

MAPS meetings are held on the 2nd Saturday of October, November, January, and February and at EXPO in March or April. A picnic is held during the summer. October through March meetings are scheduled for 1 p.m. in Trowbridge Hall, University of Iowa, Iowa City, Iowa. One annual International Fossil Exposition is held in April.

The MAPS official publication, MAPS DIGEST, is published 9 months of the year—October through April, May/June, and July/August/September. View MAPS web page at <http://midamericapaleo.tripod.com/>

President: Marvin Houg, 3330 44th St. NE, Cedar Rapids, IA 52402

1st Vice President: Dale Stout, 2237 Meadowbrook Dr. SE, Cedar Rapids, IA 52403

2nd Vice President: Gilbert Norris, 2623 34th Avenue Ct., Rock Island, IL 61201

Secretary: Open

Treasurer (Send Dues To): Sharon Sonnleitner, 4800 Sunset Dr. SW, Cedar Rapids, IA 52404

Membership: Dale Stout, 2237 Meadowbrook Dr. SE, Cedar Rapids, IA 52403

Directors: Allyn Adams (03), Blane Phillips (04), Alberta Cray (05)

Dated Material – Meeting Notice

CYATHOCRINITES



Mrs. Sharon Sonnleitner
MAPS DIGEST Editor
4800 Sunset Dr. SW
Cedar Rapids, IA 52404

FIRST CLASS MAIL