

M.A.P.S. *Digest*

Official Publication of
Mid-America Paleontology Society

Volume 20, Number 9
December 1997



MARK YOUR CALENDARS

Jan 17 MAPS MEETING

Cornell College Norton Geology Building, Mount Vernon, IA.
(Snowstorm date: January 24)

1:00 Board & General Meeting Combined
2:00 Program by Cornell Professor Ben Greenstein

Feb 11-13, 1998 VI NATIONAL CONVENTION OF THE MEXICAN PALEONTOLOGICAL SOCIETY

Sciences School, National Autonomous University of Mexico

For more information, contact:

Marisol Montellano
Departamento de Paleontologia
Instituto de Geologia, UNAM
Ciudad Universitaria, Coyoacan
Mexico, D. F. 04510

Ph: (52-5) 622-4280 or 622-4281

Fax: (52-5) 550-8432

e-mail: marmont@servidor.unam.mx

Apr 17, 18, & 19, 1998 MAPS NATIONAL FOSSIL EXPOSITION XX-CORALS

Western Illinois University, Macomb, IL

Fri., Apr. 17: 8 am - 5 pm

Sat., Apr. 18: 8 am - 5 pm

Sun., Apr. 19: 8 am - 3 pm

Feb 21 PRI FIELD TRIP TO ROYAL ONTARIO MUSEUM (ROM), TORONTO, CANADA

PRI paleontologists will conduct tour of Dinosaur Gallery with 40 foot long *Tyrannosaurus* skeleton and teach about the *Maiasaura* project. Depart from PRI by chartered bus at 5 a.m. and return at 11 p.m.

Cost: Members \$60, Non-members \$65/(\$43 children). Deadline Feb. 19.

Contact: PRI, 1259 Trumansburg Rd, Route 96, Ithaca, NY 14850
(607) 273-6623 x 18

May 9 FOSSILS OF PORTLAND POINT, LANSING, NY (FOSSIL HUNT WITH PRI)

Hunt for 380 million-year-old fossils, including trilobites, brachs, and cephalopods. Call PRI (above) for information and to register. Deadline May 7.

Cost: Members \$2 Non-members \$3/(\$2 children)

97/12 DUES ARE DUE

Are your dues due? You can tell by checking your mailing label. It reflects dues received by the 25th of December. The top line gives the expiration date in the form of year followed by month—97/12 means 1997/Dec. Dues cover the issue of the Digest for the month in which they expire.

We do not sent notices but will let you know if you are overdue by highlighting your mailing label on your Digest. We carry overdues for two months before dropping them from our mailing list.

Please include your due date and name exactly as it appears on your mailing label—or include a label.

Dues are \$20 per U.S./Canadian household per year. Overseas members may choose the \$20 fee to receive the Digest by surface mail or a \$30 fee to receive it by air mail. (Please send a check drawn on a United States bank in US funds; US currency; a money order; or a check drawn on an International bank in your currency.) Library/Institution fee is \$25.

Make checks payable to MAPS and mail to:
Sharon Sonnleitner, Treas.
4800 Sunset Dr. SW
Cedar Rapids, IA 52404

ABOUT THE COVER

This month's cover photograph was sent by Ken Olson, Lewistown, Montana. The photo shows Ken posing with the partially excavated skull of a *Torosaurus* dinosaur found in eastern Montana. *Torosaurus* had the largest skull of any dinosaur or land animal that ever lived. Olson, an amateur paleontologist and MAPS member, excavated the skull and donated it to the Museum of the Rockies at Montana State University, Bozeman.

See drawing on page 2 and story on page 3-4 for details.

HERDS OF DINOSAURS PASSED THIS WAY

source: "Real Jurassic Park found near Denver"

by Ania Savage in *Prescott Courier*, 12/7/97

sent by Jim & Sylvia Konecny

Just 15 miles west of Denver's downtown lies an exposed scene from 100-150 million years. There, on the east ridge of the Dakota Hogback, are more than 300 tracks left by two herds of dinosaurs that trekked across the then soft shoreline.

The Dakota Hogback was once the shoreline for the Western Interior Seaway, which occupied what is now the Great Plains and extended from the Mississippi delta to the Arctic. Dino- →

EXPO INFO IN THIS ISSUE

This issue carries all the information on housing and registration for EXPO XX. As noted last month, housing may be tight this year because of a national forensics meeting at the University which is using most of the hotel rooms.

We've secured information about the Holiday Inn being built in Macomb and researched nearby towns to find alternate hotels. Allyn Adams was told the Holiday Inn had the roof on in December and should be done by April. It is privately owned and the owner has an unlisted number, but the Illinois Tourism Council expects to have more information on it in February. As soon as we get information on it, we plan to block it for MAPS, if we can. We hope it will meet the needs of those attending EXPO who want to stay in Macomb rather than in a nearby community.

If you are doing an article on corals for the EXPO Digest, please send it to Maggie Kahrs as soon as possible.

SEND INFO FOR DIRECTORY

The entire Directory will be published in 1998, with a supplement in 1999. So if you have changes in name, address, or nodule that you have not yet sent, be sure to get them to the Editor. Changes that have been sent previously will be included in the new Directory. Deadline is March 1st.

DINO HERD (CONTINUED)

saurs used the seaway's shoreline as a migratory route, a path that parallels present-day Interstate 25.

Large wide tracks are attributed to an Iguanodon-like, duck-billed, plant-eating dinosaur, while the smaller 9-inch-long, arrowhead-like tracks belonged to a lighter-weight, ostrich-sized, meat-eating dinosaur.

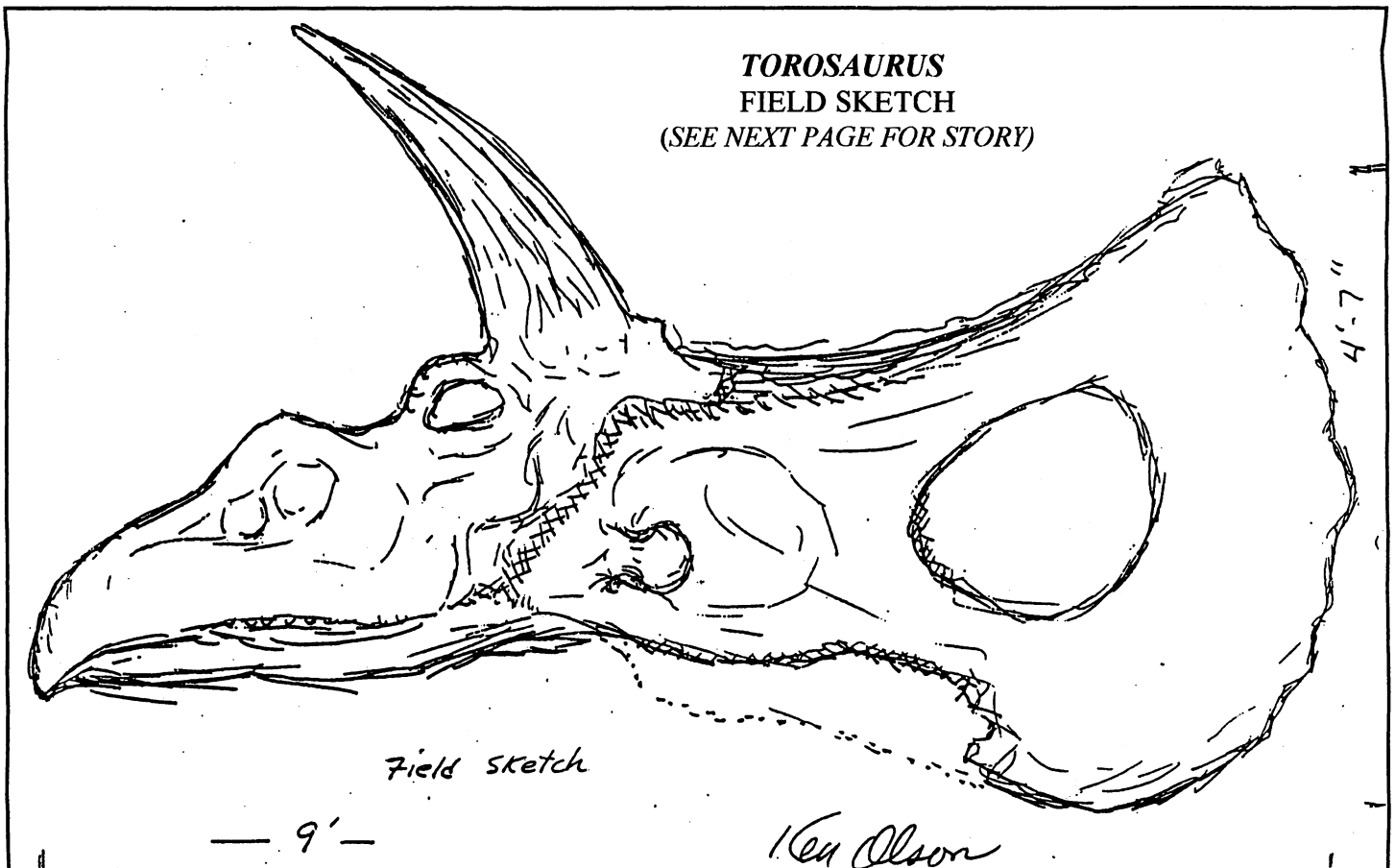
Scientists believe that shortly after the dinosaurs passed, the tracks left in the soft shoreline were filled with mud, perhaps from a flash flood from a nearby stream.

Signs along both sides of Colorado 26 and a Visitor's Center provide interpretive information about the site.

TOROSAURUS

FIELD SKETCH

(SEE NEXT PAGE FOR STORY)



LARGEST DINOSAUR SKULL IN WORLD EXCAVATED BY MAPS MEMBER

Reprinted with permission from "Largest skull ever found unearthed by Lewistown resident," by Suzanne Wright in Lewistown News-Argus, 11/12/97

What's nine feet long, has four-foot horns, weighs 1600 pounds and needed a place to call home? Why, the world's largest dinosaur skull, of course.

The skull, excavated by Lewistown resident Ken Olson, was recently delivered to the Museum of the Rockies, Montana State University, Bozeman. Maneuvering the nine-foot specimen through the eight-foot door proved a delicate operation for museum workers.

At nine feet in length, this skull of the rare horned dinosaur, *Torosaurus* is the largest skull of any dinosaur, in face of any land animal, ever! Only whales have larger skulls according to John R. "Jack" Horner, curator of paleontology at the Museum of the Rockies.

Olson excavated the remarkable fossil in eastern Montana last summer. Dr. Peter Dodson of the University of Pennsylvania, perhaps the world's foremost expert on horned dinosaurs, has called the skull a stunning find."

"This is a fantastic discovery," said Horner, "and a wonderful example of how people like Ken can contribute to scientific research and education in a museum setting."

Olson has been a Research Associate of the museum and MSU since his appointment in 1988. It's one of only two such paleontology positions in the state. The position affords him access to study museum collections, including thousands of items not on display. He also is issued permits to do field work on public land on behalf of the museum, locates new sites, and consults and works with paleontologist Jack Horner on dinosaur research.

When asked how much time he spends on paleontology, Olson quickly responds with a grin, "not enough." He usually devotes his summer vacation to fossil hunting.

By profession, Olson is a Lutheran pastor, serving Zion Lutheran Church in Lewistown, but he began his education in the sciences. For more than 25 years he has maintained paleontology as a serious avocation.

The *Torosaurus* skull which has been donated to the Museum of the Rockies, will be prepared during the winter and eventually be part of a planned new exhibit dealing with a variety of horned dinosaurs.

Torosaurus was an elephant-sized animal of the ceratopsian or horned-face family of dinosaurs, which includes the

smaller but more familiar *Triceratops*.

It had a large bony shield or frill which extended from the back of the skull over the neck area and acted as a defensive device. Over the eye sockets were horn cores more than 40 inches long. In life, these would have been covered with a sharp, horn-like sheath which would have made them even considerably longer.

The skull had originally been found and partially exposed some 23 years ago by R. W. Hiatt of Glendive, but it was covered up and left in place. Olson followed up leads, relocated the site and performed the necessary excavation.

It is only the fourth relatively complete skull ever found. The first two were discovered more than 100 years ago in Wyoming by an expedition from Yale University. The third, a juvenile, is now in Philadelphia. It was excavated more than 50 years ago in South Dakota by a team from the American Museum of Natural History in New York. After all those years, this is the next skull to come to light.

Tools of the Trade

Olson had his first fossil find close to 30 years ago in South Dakota. The first fossil he remembers as an especially exciting find was the horn of a *Triceratops*, the smaller and more commonly known cousin of *Torosaurus*.

He said the key to successful fossil hunting is the experience which comes with covering a lot of ground.

"Knowing where not to look is just as important as knowing where to look," Olson told the News-Argus.

The type of rock that contains fossils is banded and layered sedimentary rock.

"Once some pieces of bone are found, you follow the contours of land at that level," said Olson. "A lot of it is also experience, like knowing where to find good hunting or fishing habitat.

When he's out fossil hunting, Olson carries with him the tools of the trade: a backpack full of water, a pick and a hunting knife. A paint brush and toothbrush are taken along for more detailed work. A chemical preservative helps harden bone, and plaster jackets are applied to remove cracked and fragile bone.

Topographic maps are carried to precisely document where a specimen is found in space and time.

"Otherwise you just have a really neat object," said Olson. "By documenting a fossil's precise location, more information can be gleaned about the conditions that prevailed when the fossil was deposited."

Olson said most fossils are found in remote locations.

Dinosaurs are not easy to find, and once they are found they are not easy to deal with," said Olson. "Or everyone would have a dinosaur fossil."

Digging Out

To excavate the *Torosaurus* skull, Olson worked alone from dawn to dusk during a two-week period last July.

Olson thought about removing the skull in three pieces, but realizing the uniqueness of the specimen, and that it would be the largest dinosaur skull ever found, he enclosed it in a single cast to preserve its integrity.

To excavate the skull in one piece, Olson dug down and around the fossil an additional 2 ½ feet until it sat on a pedestal of dirt.

Three hundred pounds of plaster were applied with three layers of burlap. The last layer contained a number of wooden braces.

Then Olson tunneled through the pedestal in five places and

fashioned a ladder-like device by running 2x4's through the holes in the pedestal attached to 4x4's along the sides

Lifting straps secured the fossil, and the 1600 pound burlap-wrapped skull was lifted out of its resting place by a front end loader and loaded on a flatbed trailer for transport.

The *Torosaurus* Olson excavated was lying flopped on its right side. The left side of the shield had drifted off to the side. Part of it was found and cast separately, as was the right horn. By using the magic of bilateral symmetry, the whole skull can still be reconstructed.

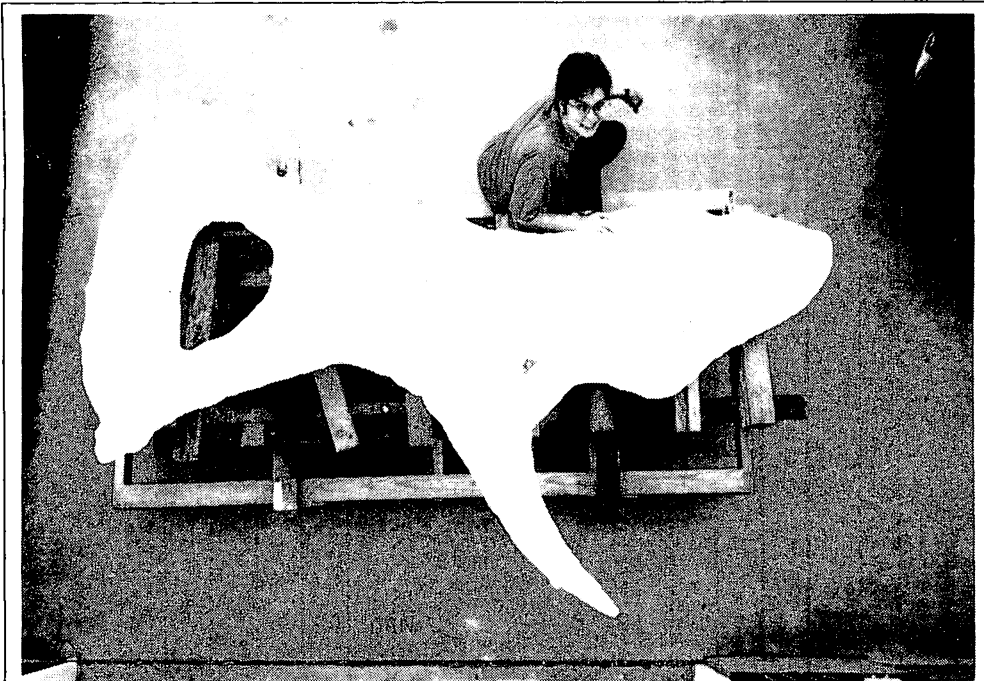
This skull will modify artist renditions of *Torosaurus* because prior to Olson's discovery, key pieces were missing.

"This is the first one that will enable us to know what the skull will look like front to back," said Olson.

"Ken Olson is technically very competent," commented Homer. "Besides being a great guy and a pleasure to work with, he has been a real asset to our program. He has contributed a lot of stuff!"

Other contributions

Among Olson's other finds is a *Triceratops* pelvis that has 58 bite-marks believed to be made by a *Tyrannosaurus rex*. It was featured in the December 1996 issue of the science magazine "Discover." The pelvis is now in the exhibit "*T. Rex* on Trial: Examining the Evidence of Meat-eating Dinosaurs" which is currently on exhibit at the museum.



Heather Olson with her father's famous nine-foot *Torosaurus* skull, taken from the roof of Olson's garage. (Note width of door.) All of Olson's three children have spent time fossil hunting. He and son Garrett found the remains of hundreds of duck-billed dinosaurs in a bone bed in South Dakota, where ongoing research is conducted at a site 200 yards wide.

The *Triceratops* pelvis contributes to the debate surrounding *T. rex*'s status as a carnivorous scavenger or a fierce predator. Biomechanical engineers at Stanford University have calculated, from this specimen, a bite-force of 3,000 pounds per square inch. The calculated bite-force has been argued as evidence that *T. rex* had the capacity to be a very effective predator. Olson co-authored a paper on the subject of the bite marks in the "Journal of Paleontology."

Olson has also discovered several thousand fossil shark teeth in Montana representing 25 species, 19 of which were new to science...

ADVERTISING SECTION

Ads are \$5.00 per inch. Send information and checks payable to MAPS to : Mrs. Gerry Norris, 2623 34th Avenue Ct., Rock Island, IL 61201. Phone: (309) 786-6505

This space is a \$5.00 size.

To extend currently running ads, please send request and remittance to Editor by the 15th of the month. We do not bill. Ads do not run in the EXPO issue (April). Ads can be printed in different sizes of type to fit a 1" space.

Make your Collection Shine!
Marc Behrendt Fossil Preparation

421 S. Columbus St., Somerset, Ohio 43783; 614-643-2818
Specialize in invertebrates

TRILOBITES ON CD ROM!!

125 ROYALTY-FREE IMAGES: Windows or Mac.
Image Browser software included. ONLY \$14.95 Ppd.
A.J. Copley, 1327 E. Washington, #282
Harlingen, TX 78550

FELLOW FOSSIL COLLECTORS

I'm looking to Buy, Sell and Trade Fossils
with other members of MAPS

Please write or call:
John D'Orazio, 95 Hill Street, Bloomfield, NJ 07003
973-743-1930. Thank you!

FOSSIL IMAGES ON EIGHT CD ROMs!

ECHINODERMATA, CEPHALOPODA, PELECYPODA, ARTHROPODA,
TRILOBITES, DINOSAURS, REPTILES, MAMMALS. 100 images on each CD
ROM. Access ROYALTY-FREE images on PC/MAC computers. \$9.95 each
CD ROM OR 8 \$69.95 PPD!

Cinema Images, Inc., 1327 E. Washington, #282, Harlingen, TX 78550

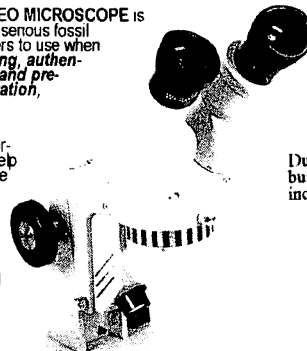
SEE CLEARLY AT LAST!

**NOW CLEARLY SEE YOU'RE REALLY
LOOKING AT BEFORE YOU BUY OR SELL!**

The MP-313 STEREO MICROSCOPE is the Perfect tool for serious fossil collectors and dealers to use when *studying, evaluating, authenticating, cleaning and preparing for presentation, display or sales.*

Gain important information which can help you know and appreciate what you own, buy or sell. This full-featured instrument shows your specimens in true 3-D, and the quality dual lighting is ideal for viewing in their natural colors.

This scope is also 35mm S.L.R. Camera adaptable, so that you can now photo-document precisely, and share what you can see.



Adjustable diopter correction on one eyepiece

Adjustable interpupillary distance

45° Inclined binocular head for comfortable viewing

Easy magnification change with rotating objectives

Dual illumination (top and bottom) built in for both transmitted and incident lighting

Deluxe Model MP-313:
10X & 30X @ \$270
Also Available
Economy Model MP-213(P21601):
10X & 30X @ \$240
(not photo adaptable)

OPTIONAL EQUIPMENT:

- 0.5X REDUCING LENSE @ \$135
- 15X AND 20X EYEPIECES @ \$106/PR
- 35mm CAMERA ADAPTERS @ \$85 (specify make & model-SLR only)

FIVE YEAR WARRANTY

Specify U.S. or European model

(Retail Value \$445) YOUR NET PRICE \$270

Including shipping in Continental U.S. (Price may increase after February 1)

Distributed by:
Marc Bettinger

AK, HI, Canada and overseas shipping will be invoiced.

Art of Money

VISA
MASTERCARD

Post Office Box 15134, Portland, OR 97293 USA
Phone (503) 234-1262 Fax (503) 233-5664

EXPO AUCTION INFORMATION

A live auction will be held Saturday evening of EXPO following a brief business meeting and awards presentation. Also during show hours, a silent auction will be held to shorten the live auction. As part of your table fees, you are **encouraged** to donate a correctly labeled, quality fossil(s) or fossil-related item(s) to the Auction. Information to include with the specimen is as follows: Brief description and common name, species information, location, and time period. A minimum guide to the value of your donation would be something equal to your table fee. In other words, if you have one table, the donation should have a minimum value of \$15; two tables, \$30; and so on.

Preference on future table assignments will be given to those who make a donation to the auction as suggested above.

Most proceeds from the auction go to the Paleontology Society Scholarship Fund. As an interesting note, a number of Auction donations are made by individuals who do not have tables, or who are unable to attend EXPO or the Auction.

The many generous donations in preceding years have allowed us to contribute \$2,000 to the Paleo Society last year and \$1,000 for each of the last several years. We hope to continue the trend.

NATIONAL FOSSIL EXPOSITION XX—1998

LOCATION AND TIME EXPO will be held at the Student Union, in the Grand Ballroom, on the campus of Western Illinois University, Macomb, Illinois. The simplest way to the site is to turn off IL 67 west on University Drive, then go south to the Union. (Follow the signs.) Set-up is permitted on Friday, April 17, at 8:00 a.m.

EXPO HOURS: Friday, April 17—8:00 a.m. - 5:00 p.m.
 Saturday, April 18—8:00 a.m. - 5:00 p.m.
 Sunday, April 19—8:00 a.m. - 3:00 p.m.
 (Many people leave early Sunday)

TRANSPORTATION There are 2 highways leading into Macomb—IL 136, an E-W route, and IL 67, a N-S route. There is no plane service to Macomb at this time, but we will help to arrange transportation from Moline, IL, airport if you will make ADVANCE arrangements with Mrs. Gerry Norris (309-786-6505), 2623 34th Ave. Ct., Rock Island, IL 61201. Or you can fly into St. Louis, MO, or Peoria, IL, and rent a car and drive to Macomb.

LODGING

Macomb area code—309; Macomb zip code—61455

★**MOTELS** We have been informed that most motels in Macomb are already booked for a national forensics convention being held at the University. A new Holiday Inn may be ready in time for EXPO. We will publish information on it as soon as we can get it. Also, we understand that most Macomb motels have different prices for weekends than for weekdays, so check prices if you are concerned about costs.

Motels are listed according to what has generally been the highest-priced one to the lowest-priced one except those marked*. It has been reported that some of the hotels raise the price for EXPO weekend, so you might want to check prices.

	Ameri Host	1646 N. Lafayette	837-2220
	Macomb Inn (Days Inn)	1400 N. Lafayette	833-5511
	Super 8	313 University Drive	836-8888
	Pineapple Inn	204 Jefferson Street	837-1914
	Travel Inn	Hwy 136 West	833-4521
	Time Out Motel	Hwy 67 North	837-4838
	Star Motel	Hwys 67 S and 136 E	837-4817
		1507 E. Jackson Rd.	
	Brockway House (Bed & Bkfst)	331 E. Carrol	837-2175*
	Holiday Inn Express (Being Built--Info will be published when it becomes available)*		
KEOKUK, IA (50 Miles)	Fairfield Inn	3404 Main St.	800-228-2800/319-524-9000
	Holiday Inn Express	4 th & Main St.	800-465-4329/319-524-8000
	Super 8 Motel	3511 Main St.	800-800-8000/319-524-3888
FORT MADISON, IA (50 Miles)	Best Western Iowan Motor Ldg	Hwy 61 West	800-432-2693/319-372-7510
	Madison Inn Motel	3440 Ave. L	800-728-7316/316-372-7740
	Santa Fe Motel	2639 Ave. L	800-462-4657/319-372-1310
	Super 8 Motel	Hwy 61 West	800-800-8000/319-372-8500
ROSEVILLE, IL (19 Miles)	Countryside Motel	Hwy 116 E.	309-426-2613
BUSHNELL, IL (16 Miles)	Bushnell Inn	290 Green St.	309-772-3172
CARTHAGE, IL (37 Miles)	Carthage Town House	160 Perry Ave	217-357-3118
	Prairie Winds Motel	1 mile W on Hwy 136	217-357-3101
MONMOUTH, IL (32 Miles)	Melings Motel & Restaurant	1129 N. Main	309-734-2196
	Super 8 Motel	1122 N. 6 th St.	800-800-8000

If you plan to stay in a motel, we urge you to make your reservations early.

★**CAMPERS** Persons traveling in self-contained camping units may park on the parking lot. See Public Safety located in the Union. **IDENTIFY WITH MAPS**

★**MOBILE HOME PARKING** is offered at **TILL JORDAN MEADOW MOBILE PARK** by calling 309-837-2883, for those who wish utility hook-up.

★**UNION**—Contact Gilbert Norris (309-786-6505), 2623 34th Ave. Ct., Rock Island, IL 61201 to see if rooms are available. (There are a limited number.) Rooms are to be paid directly to the University Union when you check in or out. These rooms must be rented for both Friday & Saturday. You must request rooms early. You may wish to be on standby.

★**OLSON HALL**—Dormitory-style housing is available at the University in Olson Hall—Dorm rooms with community bath on floor. **CONTACT THE UNIVERSITY** directly at 309-298-3500 for reservations.

IN ALL CASES, IDENTIFY WITH MAPS

PARKING For those living in the Union, parking will be east of the Union with room permits. For others, get visitor permits from Public Safety. Park in specified lots. After 4:00 p.m. Friday, ample parking is available. Before 5:00 p.m., patience is needed.

MEALS Meals are available in the Union: fast food in the lower level and a deli in the basement. Ice cream is also available! There are many restaurants in town and a deli bar in a nearby grocery store.

EXPO REGULATIONS Everyone is requested to make advance registration by March 30, 1998. Mark your calendars now so you don't forget! Registration forms are found on page 8 in the Digest for your requests for tables, display space, etc. Send these forms and your check made payable to MAPS to: Doug DeRosear, Box 125, Donnellson, IA 52625. Please send dues to Treasurer before EXPO—it is a lot of extra work for us to accept them at EXPO.

ALL TABLES WILL BE ASSIGNED Cost of the tables is \$15.00 each for a 6' table in the Ballroom for the weekend; \$15/table in the Lobby. (Lobby tables will be used only for overflow.

MAXIMUM of 2 tables per person/membership initially. Over 2 tables wanted? You may request extra tables, and if they are available, you will be notified after March 15th (pay for these at EXPO). Requests for extra tables will be filled in rotation—one table per person per round until all space is gone. Also, those with special needs for more than 2 tables may apply to the Board by March 1 for an exception. All decisions will be made as soon as possible, with all decisions made by March 15. MAPS memberships will have first chance at all tables requested before March 1. (No more than 4 tables will be allotted to a person, family or group, whichever is the larger unit.)

The Committee insists that all materials be fossil or fossil-related. Mountings, gemstones, minerals, Indian artifacts, etc., are not permitted! Aisles must be kept clear at all times.

DISPLAYS EXPO is special because of displays. They are a gift. They give us all a look at the ancient epochs of the world. Display tables are provided at no cost—8 ft. limit. Bring your own lights, if you need lighting.

ALL RESERVATIONS WILL BE ACKNOWLEDGED

OTHER ACTIVITIES CORALS will be this year's theme. Friday's Keynote Speaker will be James E. Soroul, Department of Geology, Binghamton University, Binghamton, New York. By January of 1998, the Paleo Research Institute will have published his book on Iowa corals. His program on corals will be preceded by the presentation of the Kathryn Palmer Award by the Paleo Research Institute. A live auction will follow a short business meeting and awards presentation on Saturday evening. Silent auctions will be held Friday afternoon and Saturday. Proceeds from the auctions go to a geology scholarship. Each dealer is encouraged to contribute a specimen/specimens equal to or greater than the cost of the tables he/she has rented in order to assure consideration for table space at the next EXPO. Include full data and the name of the fossil donor. Specimens can be left at the information desk until 3:00 p.m. Saturday. If you wish to mail a specimen, send it with pertinent information to Paul Rechten, 7405 Shields, Harvard, IL 60035. Paul will send a postal acknowledgment on receipt of the specimen.

Show Chairman-----	Karl Stuekerjuergen, 1503 265 th Ave., West Point, IA 52656-----	(319) 837-6690
Co-Chairman-----	Allyn Adams, 612 W. 51 st Street, Davenport, IA 52806-----	(319) 391-5443
Table Reservations-----	Doug DeRosear, Box 125, Donnellson, IA 52625-----	(319) 835-5521
Auction-----	H. Paul Rechten, 7405 Shields, Harvard, IL 60035-----	
Publicity-----	Tom Witherspoon, Sr., 6611 Miller Road, Dearborn, MI 48126-----	(313) 582-3139
EXPO DIGEST editor-----	Maggie Kahrs, 9145 U.S. Hwy 50 East, Seymour, IN 47274-----	(812) 522-6093

Please ADD the Following NEW OR REJOINING MEMBERS to Your Directory:

Dan & Julia Alldredge
3401 Mesker Park Dr.
Evansville IN 47720
812-428-2164
Bristlecone@webtv.net

Jim Chaney
PO Box 114
Wylie TX 75098
972-442-7303
OTODUS@AOL.com

Chris & Guy Di Torrice
PO Box 256
Newport OR 97365
541-961-2489
chrisandguy@newportnet.com

Andy Nethery
302 Willow Way
Wylie TX 75098
972-429-0357
OTODUS@AOL.com

Zookeeper/A.V. Dept @ Library. Major interest prehistory in general. Dan also an artist & illustrates natural history--just illustrated dino text for local university Prof. Want to have more fossils and keep up on current events in the field.

Plumber. Will trade. Major interest Permian & Pleistocene. Has for trade Permian & Pleistocene. Member of Dallas Paleo Soc. Wants to broaden contacts and association.

Destination Marketing. Will trade. Major interest expanding collection beyond Miocene marine... bringing fossil education/collecting into schools/linked to earth science(s). Have for trade wide variety of Astoria Formation Miocene invertebrates, some mammal bone, earlier leaf impressions from Goshen/John Day formations. All from OR. Looking to contact with like-minded people.

Restaurant Serv. Will trade. Major interest Cretaceous micro shark teeth; also macro teeth. Member of Dallas Paleo. Soc. Wants to broaden his contacts & association.

Please NOTE The Following CHANGES OF ADDRESS or CORRECTIONS:

Samuel J. Ciurca Jr.
Paleo Research Assoc
44 Stonington Drive
Pittsford NY 14534
Geologist-Stratigrapher.
EURYPTERIDS, scorpions,
Silurian plants.

John D'Orazio
95 Hill Street
Bloomfield NJ 07003
973-743-1930

John Fagan
c/o Essex Catholic HS
135 Glenwood Av.
East Orange NJ 07017-2099
973-636-3334
wk: 973-674-420032
fx: 973-674-9121
oneham4u@aol.com

Stuart Grieve
266 North Railroad
Laramie WY 82072
307-742-2079

314-361-4504

David R. Lambert
20 Tileston Street #2E
Boston MA 02113-1908
617-573-8345
dlambert@suffolk.edu

Don Miller
16 Marsh Woods Lane
Wilmington DE 19810
302-475-8819
302-475-5973

Dealer interested in buying, selling,
or trading. Coauthor of
DISCOVERING FOSSILS.

S. Kathleen Steere
1307 Stuart St. NW
Massillon OH 44646

Lila Stevens
291 Dausman Park
Clarksville MI 48815

Dwayne D. Stone

103 Halstead Road, Devola
Marietta OH 45750
740-373-1798
Retired geology professor.

John Van Donk
6975 Amity Pike
Plains City OH 43064-9137

Fred H. Wessman
3427 Lost Oak Drive
Spring TX 77388
713-353-3412

Bill & Cheryl Wildfong
639 Woodley Rd.

Maitland FL 32751

407-339-1136
Planning Engineer/Graphic Artist.
Will trade. Major interest invertebrates. Want to gain & share information, trade, collect, and display fossils. Meet friends with same interests. Have for trade echinoids, fossil gastropods, and bivalves (many extinct) from the Caloosahatchee beds.

Glori L'Ecuyer
5777 DeGiverville Ave.
St. Louis MO 63112

NATIONAL FOSSIL EXPO XX—REGISTRATION FORM

Please complete the form below, enclose a check payable to **MAPS**, and mail to **Doug DeRosear, Box 125, Donnellson, IA 52625**, before March 30, 1998.

NAME: _____ PHONE NO.: () - - -

ADDRESS: _____ CITY _____ STATE _____ ZIP _____

____ Yes, I will provide a display for EXPO. It will require _____ linear feet of table space—8 ft. Maximum display.

I request _____ (number) of 6 ft. Tables for selling and swapping. Cost is \$15.00 per table. 2 tables/person/membership maximum initially; maximum limit of 4/family or group in all (assigned only in special need cases or if extras are available.) Check enclosed: \$ _____ (**Only send payment for up to two tables per person.**) Any extras assigned through request will be paid for at time of notification or at EXPO.

____ Number of chairs I will need _____

____ Yes, I will help run EXPO; _____

Front desk—Fri. _____ a.m. _____ p.m.; Sat. _____ a.m. _____ p.m.; Sun. _____ a.m. _____ p.m.

NO ONE EXCEPT THE GUARD IS ALLOWED ON THE FLOOR FOR ANY REASON AFTER HOURS!

The Mid-America Paleontology Society (MAPS) was formed to promote popular interest in the subject of paleontology; to encourage the proper collecting, study, preparation, and display of fossil material; and to assist other individuals, groups, and institutions interested in the various aspects of paleontology. It is a non-profit society incorporated under the laws of the State of Iowa.

Membership in MAPS is open to anyone, anywhere who is sincerely interested in fossils and the aims of the Society.

Membership fee: One year from month of payment is \$20.00 per household. Institution or Library fee is \$25.00. Overseas fee is \$20.00 with Surface Mailing of DIGESTS OR \$30.00 with Air Mailing of DIGESTS. (Payments other than those stated will be pro-rated.)

MAPS meetings are held on the 2nd Saturday of October, November, January, and March and at EXPO in April. A picnic is held during the summer. October through March meetings are scheduled for 1 p.m. in Trowbridge Hall, University of Iowa, Iowa City, Iowa. One annual International Fossil Exposition is held in April.

MAPS official publication, MAPS DIGEST, is published 9 months of the year--October through April, May/June, July/August/September.

President: Marvin Houg, 3330 44th St. NE, Cedar Rapids, IA 52402
 1st Vice President: Dale Stout, 2237 Meadowbrook Dr. SE, Cedar Rapids, IA 52403
 2nd Vice President: Karl Stuekerjuergen, 1503 265th Avenue, West Point, IA 52656-9029
 Secretary: Alberta Cray, 1125 J Avenue NW, Cedar Rapids, IA 52405
 Treasurer: Sharon Sonnleitner, 4800 Sunset Dr. SW, Cedar Rapids, IA 52404
 Membership: Dale Stout, 2237 Meadowbrook Dr. SE, Cedar Rapids, IA 52403



Dated Material - Meeting Notice

CYATHOCRINITES



Mrs. Sharon Sonnleitner
 MAPS DIGEST Editor
 4800 Sunset Dr. SW
 Cedar Rapids, IA 52404

MID-AMERICA PALEONTOLOGY SOCIETY

FIRST CLASS MAIL

