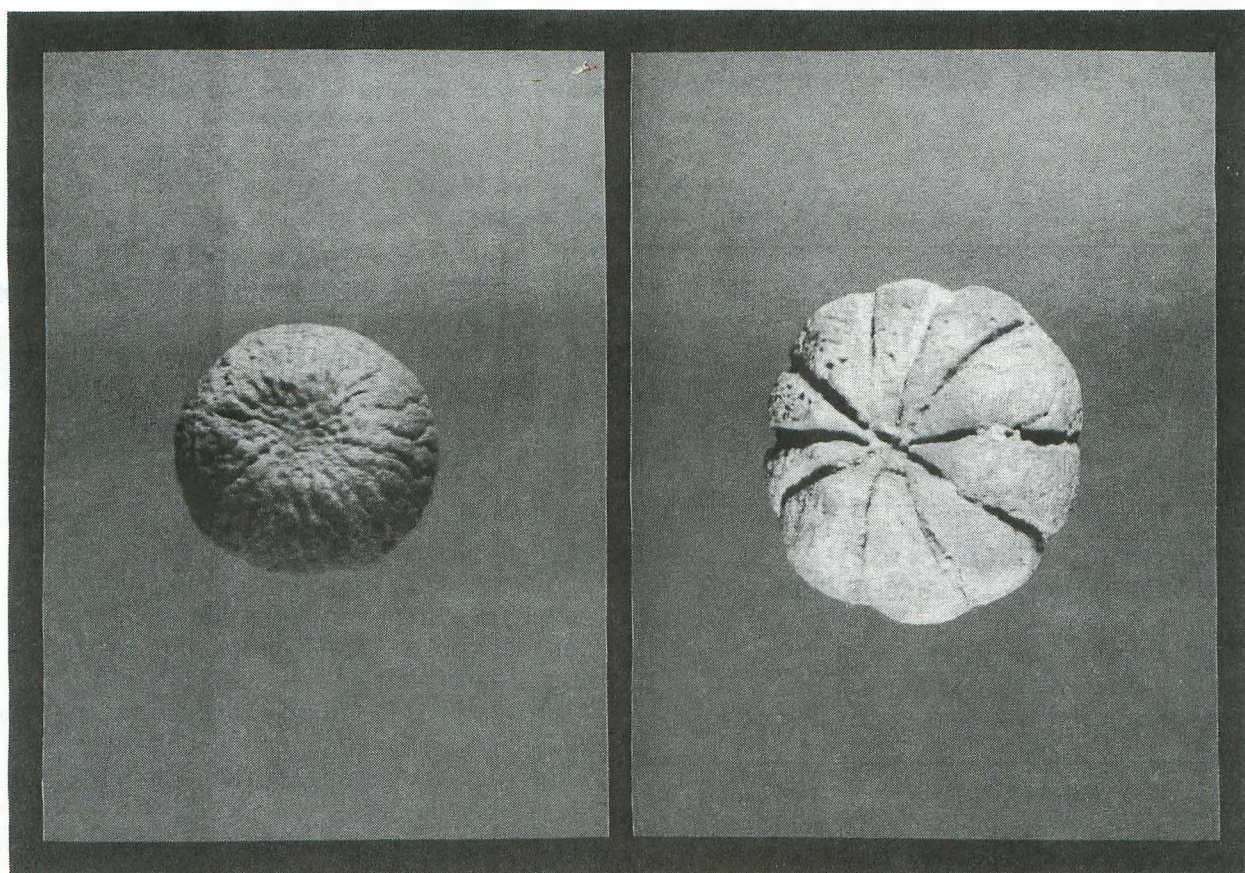


# M.A.P.S. *Digest*

Official Publication of  
Mid-America Paleontology Society

Volume 19 Number 2  
February, 1996



## MARK YOUR CALENDARS

**9 MAR** **MAPS MEETING.** Trowbridge Hall,  
University of Iowa, 123 N. Capital  
St., Iowa City, IA. Main Lecture  
Room, #125.

1:00 Board & General Meeting  
combined.

2:00 Program: We anticipate a  
speaker from the University  
of Iowa.

**9 MAR** **TAMPA BY FOSSIL CLUB NINTH ANNUAL**  
**10 FOSSIL FAIR,** Fort Homer Hesterly  
Armory, 504 N. Howard Ave., Tampa,  
Florida

Sat. 9-5  
Sun. 10-4

**7 APR 1996 DINOFEET II, ARIZONA STATE**  
**11 UNIVERSTIY, PHOENIX, AZ.**  
**21**

Contact: Don Wolberg  
(202)720-7178 OR Ed Stump  
(606)965-5081

**12 APR 1996 MAPS NATIONAL FOSSIL**  
**13 EXPOSITION XVIII--BRACHIOPODS**  
**14**

Fri., Apr. 12: 8am - 5:30pm  
Sat., Apr. 13: 8am - 5pm  
Sun., Apr. 14: 8am - 3pm

### ABOUT THE COVER

This month's cover photos are from the collection of Gil Norris, Rock Island, Illinois. Shown are two sponges from the Brownsport Group, Silurian, Parry County, Tennessee: *Astylospongia praemorsa* (left) and *Caryospongia insico-Lobata* (right).

### \*\*\* 96/02 DUES ARE DUE \*\*\*

Are your dues due? You can tell by checking your mailing label. The top line gives the expiration date in the form of year followed by month--96/02 means 1996/Feb. Dues cover the issue of the Digest for the month in which they expire.

We do not send notices but will let you know if you are overdue by highlighting your mailing label on your Digest. We carry overdues for two months before dropping them from our mailing list.

Please include your due date and name exactly as it appears on your mailing label--or include a label.

Dues are \$20 per U.S./Canadian household per year. Overseas members may choose the \$20 fee to receive the Digest by surface mail or a \$30 fee to receive it by air mail. (Please send a check drawn on a United States bank in US funds; US currency; a money order; or a check drawn on an International bank in your currency.) Library/Institution fee is \$25.

**Make checks payable to MAPS and mail to:**  
**Sharon Sonnleitner, Treas.**  
**4800 Sunset Dr. SW**  
**Cedar Rapids, IA 52404**

### BASIC TOOLS FOR THE SERIOUS FOSSIL COLLECTOR from PALEO Notes, Jan/Feb 1995 Guy Darrough, ed

Geologist pick--Estwing brand  
Sharp chisels--a selection is best. 1/4"  
to 1 1/2"  
Small hand sledge--2 1/2-3 lbs preferred  
Sledge hammer--at least 10 lbs.  
Shovels--folding types work well  
Pry bar--large and small  
Dental tools--for working with delicate  
specimens  
Aluminum foil--for reinforcing specimens  
Newspaper--for wrapping specimens  
Elmers glue--stabilizing and repairing  
specimens  
Super glue--stabilizing and repairing  
specimens  
Pill bottles--for small fossils and  
fragments  
Note pad and pencil  
Hand lens  
Pocket knife  
Knapsack  
Work gloves  
Safety glasses

**YOUR PHOTOS  
AND ARTWORK  
ARE NEEDED FOR COVERS!  
PLEASE SEND THEM TODAY**

## EXPO XVIII--BRACHIOPODS

With only two months left before EXPO, we hope you have made your table and room reservations if you are planning to attend the big show April 12-14 in Macomb, Illinois. Karl Stuekerjuergen reported that tables are selling briskly. Rooms often sell out at EXPO time because of other activities at the University, so it's a good idea to reserve them early.

For those of you who will be attending your first EXPO, **no admission is charged** for the show and you do not need to be a MAPS member to attend. There are many wonderful specimens on the floor throughout the show, some of which most of us can only dream of owning. **Although the show runs until 3:00 on Sunday, many dealers leave early** because they have long distances to travel and/or sometimes the weather is bad for traveling.

## EXPO REGISTRATION CORRECTIONS

Because I pulled up the EXPO information from 1994 to update for EXPO 1996, I missed some of the changes that were made in 1995 and also apply this year. Please note the corrections:

- Union rooms **do not** have to be paid for before EXPO. Those room costs will be paid directly to the Union at EXPO by the person(s) renting them.
- MAPS members will have first chance at all tables requested before March 1.
- Maximum of 2 tables per family/membership.

## MEMBERS EXPRESS THANKS TO MAPS WORKERS

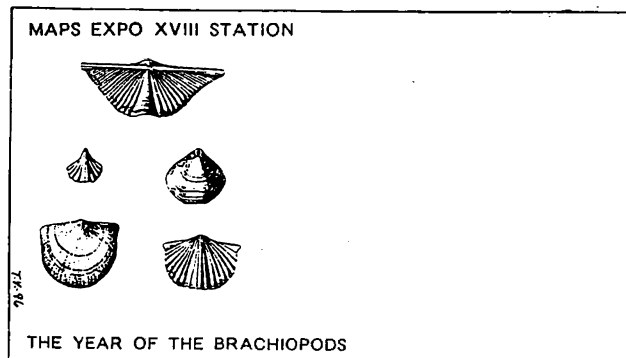
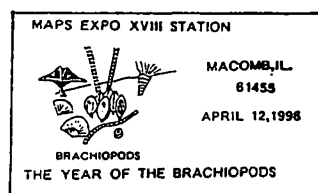
*As a majority of members are paying their dues at this time of the year, many also take time to include a note of thanks for the work put in by the officers and other volunteers. This note, representative of many, came all the way from Luxembourg:*

Congratulations to all the people working for MAPS. I still enjoy your publications after 15 years.

Best wishes,  
Hubert Huygens

## MAPS EXPO POSTAGE CANCEL

Tony Verdi has done it again! For the ninth year in a row, Tony has designed a postage cancel and an envelope which will be available only at our show. The post office will set up a station at the show, so bring your letters and get them mailed from the show floor with the special "brachiopod" cancel. You will be able to get the "brachiopod" envelopes from Tony's table, next to the post office. (He usually has appropriate stamps, too.) All Digests which are not picked up at the show are mailed from the floor with the show cancel.



Those of you who want the cancel and envelope but cannot attend the show can send a request to: Tony Verdi, 1225 Ledge Rd., Hinckley, OH 44233.

**Include \$1.25 for each envelope plus a self-addressed, stamped #10 envelope. Deadline for requests is March 31.**

## NEW MUSEUM IN ONTARIO, CANADA

Leslie Harris, Sarnia, Ontario, sent the following note:

One of my friends has opened a Museum in a downtown Eaton Mall. It is one of the best displays that I have seen, outside of EXPO of course. It is in a large room and is divided between fossils and minerals of museum quality. If anybody is going through this area this summer, they should drop in. It would be worth their while.



## LOOK, LOOK, AND THEN LOOK SOME MORE

by Kevin Shannon, 311 Kings Rd., N. Carolina, 23472

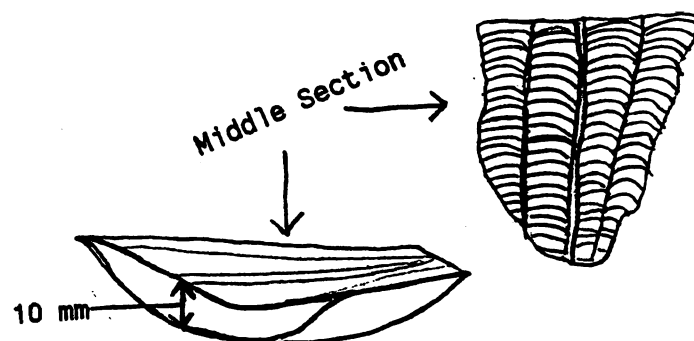
**Fossil Motto:** If you don't find what you're looking for today, maybe you will next time out. **Moral:** don't give up.

My family and I went back home for a visit in the Finger Lakes area of New York State. While I was home checking the old haunts, I, of course, went fossil hunting. The specific area is about 20 miles north of Conning, New York, on county route 22. Near this route is a creek bed that is approximately 4 to 8 feet below the general lay of the land. In this section of the creek there is a little bedrock; surface ground consists of glacial deposits. Now, anyone who knows the Finger Lakes area, specifically the southern tier, knows the surface is Devonian. The outcrops from Lake Ontario down to the Pennsylvania border areas follow: Ordovician, Silurian, Devonian; above Lake Ontario: Ordovician.

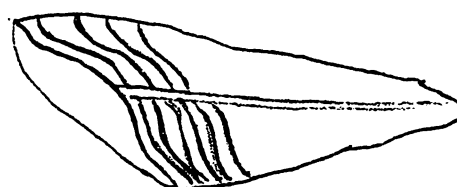
As mentioned earlier, along with these outcrops, areas of Terminal Valley Heads glacial moraine deposits exist. For me, as an amateur, they create a large puzzle with an obvious problem. When "testing" an area, it is hard to know what period you're in unless you find solid bedrock and the index fossils associated with it to correctly date it. So I bypass the conventional testing and treat each stone, each fossil, on an entirely individual bases. So when I get my macro fossils, I consult my library and see what I have. If I run into a problem piece, I have a solution to that as well. I gather the fossil as well as a fair amount of surrounding matrix. I take the matrix, break it up and look for micro fossils to help guide me as to the age.

Back to the motto. I've been looking for a conularid among all this deposit. I've found numerous trilobite pieces (of course), tabulate coral, brachs, crinoid columnals, cephalopods, etc., but never a full conularid. Well, in June, 1995, I found it. *Conularia undulata*<sup>1</sup>. It was in a piece of sandstone, (Chenungian) Dev., in three pieces, crushed flat.

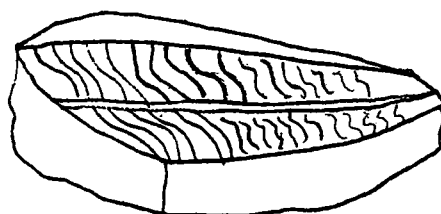
The middle section, which would have been the actual organism in life, then slowly replaced, is triangular in shape. it measures ~42 mm x ~48 mm.



It is in sandwich form. The middle section is the cast of the original structure. The top and bottom have the outer wall impressions.



1. Bottom impression measures smaller because of the rock's being previously broken. (Note: impressions are worn and had to be viewed with at least a 10x loupe as signified by the bolder lines.)



2. Top impression measures ~45 mm, then tapers down in triangular form over a total length of 70+ mm.

Orientation of preservation seems to suggest that the conularid died and fell,

or possibly was tipped over, and then covered. The open end filled in due to current activity and was slowly pressed from bottom to top to present its burial form of triangular taper. Another point that tells of orientation would be the brach *Cariniferella (tioga)*<sup>2</sup> internal and external molds on the one side of the stone. According to the literature, the conularid would be mid Devonian and the brach U. Devonian. Since strata this close in age causes me a certain amount of confusion, I'm content to leave it as Devonian in general. Though it is not museum material, it is a long-awaited addition to my little collection, and it was a good capper to my vacation.

Well, to sum it up, don't get discouraged. Keep moving along and keep looking; you never know when the thing you're searching for will turn up.

*(I would like to thank my wife for typing this up for me and for putting up with a "rock head" all these years. The Author)*

#### REFERENCES

1. Shimer, H.W. and R.R. Shrock. *Index Fossils of North America*, Cambridge, MIT Press, 1944. p. 72, pl. 22, & p. 77.
2. ----- p.352-353, pl. 139.

#### **HR 2943 FOSSIL PRESERVATION ACT OF 1996 by John Boland, MAPS member**

On February 2nd, Representatives Tim Johnson (SD) and Joe Skeem (NM) introduced the fossil bill HR 2943, which was referred to committees for approval prior to introduction to the House floor. You are asked to indicate your support to the above sponsors and your legislative congressmen. Write to US House of Representatives, Washington, DC 20515 or US Senate Bldg. Washington, DC 20510 or call (202)224-3121. The cost is less than 75 cents each.

The bill allows surface collecting (reconnaissance) for self use with hand tools only in an area of surface disturbance less than two square meters (40" x 80") without a permit. Areas include BLM, Forest Service, US Fish & Wildlife, Bureau of Reclamation, and the US Corps lands. Three other collecting activities require a permit: educational, scientific, and commercial (quarrying with fees and royalties). Federal land managers will designate areas off-limits, i.e., environmental and scientifically important areas. Civil penalties of \$1000 to \$10,000 can be assessed for violators.

A seven person National Fossil Council will be established and within six months, guidelines and parameters for determining "scientifically unique" fossils, lands to close for reconnaissance collecting, advice to land managers, permits, fees and royalties, etc., will be established. All "scientifically unique" fossils and records must go to designated locations. Council determinations will be published in the Federal Register. The Council consists of representatives of: USGS (chair), USNM (museums), SVP, PS, BLM/USFS, AAPS, MAPS/AFMS for 5 year terms except staggered first appointments.

This bill is the outgrowth of the 10 recommendations from the National Academy of Science Report in 1987 and the efforts of the American Lands Access Association to obtain legislation to govern collecting fossils on public lands. It is the reconciliation of the needs of a diverse group as represented by the members on the Council. Disputes will be handled by the Council and the legislation should remain current for years to come.

Since every MAPS member has a personal interest in fossil collecting for yourself, your children, and grandchildren, we hope you will write the US legislators (House and Senate) of your state TODAY. Effective support means hundreds of letters from every state. They all have to vote on this bill and some vote twice--in committee and on the floor.

# THINKING OF MAPS MEMBERS AND FRIENDS DURING THESE WINTER MONTHS

by Eric S. Kendrew, from Sunny Florida?



Sitting in front of the TV watching the news, headline **"THE BLIZZARD OF '96."** It makes me wonder how our many fossil friends are surviving those freezing temperatures. I know many are warming up their basements and preparing their fossils for the upcoming MAPS EXPO, (because collecting is out of the question at this time of year.).

We have had one of the coldest winters in Florida this year, since it snowed here back in 1978. I remember the day well! I was awakened early by a telephone call, with a friend singing **"Frosty the Snowman"** at the other end of the phone. He told me to look outside. As I looked out the window there was a light snow falling and 2" of white powder on my Toyota pickup. I suddenly was excited, so I grabbed my camera, ran outside and took several snap shots. I then ran back inside, called my girlfriend (who is my wife now) and gave her the news. I then told her I was going fossil hunting. She said I was crazy... But as I told her, when you've got the bug--you've got the bug. So I made a pot of coffee, filled

up the thermos, grabbed some fruit, jumped in my pickup and headed for the Phosphate mines. Country roads all the way. The first bridge I went across--I did five (5) 360's, got it straightened out and did several more 360's on every bridge I crossed. I was determined to collect fossils in the snow before it melted. As I approached the mine where I was going to do my collecting, I was in wonderland... All the hills were covered with 1/2 inch of snow. Was I still in Florida, or did I do so many 360's that I was transported into another place in time. Whatever it was, I was in hog heaven. So I began collecting a favorite spot for shark teeth. I found several small teeth right away; they were covered with a light glistening snow and were cold to the touch. I continued collecting for the rest of the day. With the snow melting within the first hour of my arrival. Not finding a whole lot of exciting fossils that day, I then packed it in for the day and went home.

Still, I will never forget the day it Snowed in Florida and the day I went collecting in it! It was exciting... So MAPS members in the north, keep warm and I'll see you in April at the EXPO.

## EXTINCTIONS AND VOLCANISM

from *American Paleontologist*, Nov. 95, p.5,  
Warren D. Allmon, ed.

The role of volcanism in the largest episodes of mass extinction was brought back into the limelight recently with the publication of a new date for the Siberian flood basalts indicating that they may have been approximately coincident with the Permo-Triassic extinction. Paul Renne and colleagues suggest (*Science* 269:1713, 1995) that the "Siberian traps", which represent the largest volcanic eruption on land known in Earth history, are approximately 250 million years old, almost exactly the date of the Permian-Triassic boundary. There are troubles, however, with this result on two fronts (*Science* 270:27, 1995): some geochronologists don't believe the dates of eruption and extinction match, and some paleontologists don't believe there was only one extinction. There is also the continuing question of interaction between extraterrestrial impacts and volcanism. Could, for example, an impact have caused

the volcanism? Could it have exacerbated its effects (*New York Times*, August 22, 1995)?

## MAPS NAME BADGES AVAILABLE

If you want a name badge for EXPO, order one soon, following the instructions below:

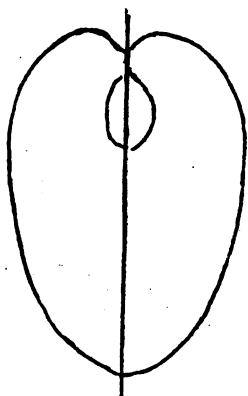
- Request a MAPS name badge.
- Print your name exactly as you want it to appear.
- Include your city and state.
- Include your return address.
- Send the above information along with a check in the amount of \$6.36 to:

**Designer Awards**  
**207 Western Avenue**  
**Davenport, IA 52801-1012**  
**Ph. (319) 326-2222**

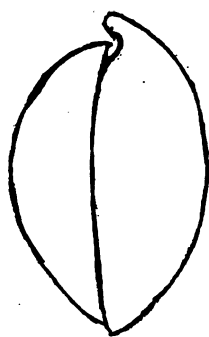
The price includes postage, handling and tax. MAPS is not directly involved in the sale of the badges; however, please let us know if you have any problems.

**CLAM OR BRACH?****HOW TO TELL THE DIFFERENCE****by Marian McNabb, Linn Grove, Iowa**

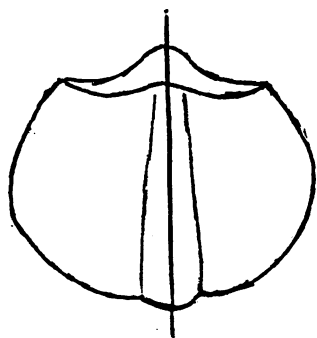
We got so many different explanations as to how to tell what was a brachiopod that I thought...this explanation...might help newcomers to fossils be able to tell the difference. It's really simple to me now: you have to divide a brachiopod across the valves, but a clam can be divided equally between the valves.



Side view of a clam.  
Divide a clam between the valves  
to be in equal parts.



Side view of a brachiopod.



Divide a brachiopod across the valves  
to be in equal parts.

**LETTER TO THE EDITOR**

With the proliferation of personal computers and the general availability of access to 3-mail and to the internet, it seems like the time is right to add an 3-mail address section to the membership directory. I have broached the subject to a few friends, and I have inquired about the idea to a few fossil forums on the internet, the response to the idea has been limited but all were positive. What I am suggesting is a separate section at the end of the Directory which simply lists members' names alphabetically and has their 3-mail addresses. it would be a quick reference to those members that are on line, sort of like the sort by state section.

I understand that a questionnaire was sent out last year with the Directory updates; apparently I ignores this as I did not have 3-mail at the time. I would be interested in the reasons for the small response,. I did speak to Sharon and she indicated that she had very few e-mail addresses for the new Directory. My question--is this due to a lack of access to e-mail, or simply because the form was not mailed in.

Another response I got to my e-mail query was to possibly include a list of paleo-related discussion groups, museum home pages and other paleo-related information which can be found on the internet. That is a good idea as well.

If the membership feels that an e-mail section is a good idea, please let Sharon know what your e-mail addresses are. I would be happy to help collect the e-mail addresses of MAPS members and to help compile the list for the membership Directory via e-mail if this is a preferred method by some members. I could easily forward the information to Sharon. Such a membership list would need to be updated regularly by e-mail as things are very fluid on the internet. I would welcome comments on this approach. If the membership feels this is a reasonable thing to do, members with access to e-mail can contact me at "gar@eznet.net".

Sincerely,  
Gary Rakes

## ADVERTISING SECTION

Ads are \$5.00 per inch (6 lines x 1 column--43 spaces). Send information and checks payable to MAPS to: Mrs. Gerry Norris, 2623 34th Avenue Ct., Rock Island, IL 61201. Phone: (309) 786-6505.

This space is a \$5.00 size.

To extend currently running ads, please send request and remittance to **Editor** by the 15th of the month. We do not bill. Ads do not run in the EXPO issue (April). Ads up to 8 lines by 54 spaces can be printed in smaller type to fit a 1" space.

### Make Your Collection Shine!

#### Marc Behrendt Fossil Preparation

421 S. Columbus St., Somerset, Ohio 43783  
614-743-2818 Specialize in invertebrates  
Discount pricing for collections  
and multiple specimens

### ANDERSON'S LABORATORY

#### Fossil Preparation: Personal Service

Steven Anderson, 18 Barker Ave.  
Toronto, Ont. CANADA M4C 2N3  
(416) 467-4732  
CHARGE: \$10. U.S.

### CD ROM For WINDOWS or MACINTOSH:

Approx 1,300 colorful images;  
DINOSAURS and MORE!

Image browser software included  
ONLY \$19.95 postpaid

Cinema, Box 10227, Columbia, Mo 65205-4003

**96 LIST Available** listing 25 good collecting sites in the Iowa region updated, accurate, first-hand information \$10. 94 & 95 LIST for \$8 each. Make checks payable to: Robert Wolf 3521 10th Ave. N. Fort Dodge, IA 50501

## FOSSIL NEWS

JOURNAL of AMATEUR PALEONTOLOGY

- ✈ Mailed Monthly
- ✈ Feature Fossil
- ✈ Field Work and Preparation
- ✈ Amateur Contributions to Paleontology

**Only \$28 for 12 complete issues.**

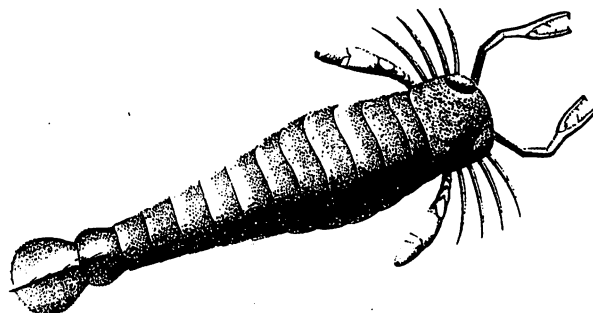
(Outside of U.S. add \$10 for shipping - mailed quarterly)

Fossil News is the only journal dedicated to the activities of amateur paleontologists and fossil enthusiasts. Fossil News goes beyond the surface, providing readers with background information and insight into the personalities who are making exciting scientific discoveries.

### FOSSIL NEWS

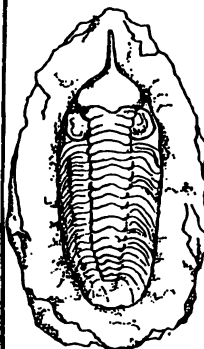
Subscriber Services  
6803 Whitman Street Northeast  
Dash Point, Washington 98422  
<http://www.halcyon.com/bonebug/>

**LARGE FOSSIL COLLECTION FOR SALE**  
Rare arthropods including phyllocarids and eurypterids. Rare genera including **PTERYGOTUS**, **ERIEOPTERUS**, **WAERINGOPTERUS**, **HUGHMILLERIA** and **BALTOEURYPTEUS**. Thousands of rare specimens. Send inquiries to: S.J.Ciurca, Jr. PaleoGraphics<sup>TM</sup> 604 Andrews Chapel Rd., Durham, North Carolina 27703. (919)598-6457



Learn how to sculpt miniature, museum quality dinosaur models & dioramas, an exciting hobby! Sculptors, A. Debus & B. Morales explain the "A to Z" essentials in their new book, **DINOSAUR SCULPTING: A Complete Beginners' Guide**, 1995, amply illustrated, 100 pages. Send \$21.95 to A. Debus, 1208 Nashua Lane, Bartlett, IL 60103. Our book is the only one its kind & is informatively written. Also inquire about our original dinosaur casts.

**Free Fossil Catalog.** Largest selection in S.E. For the beginner to advanced collector. Vertebrates, invertebrates, & books. Send large S.A.S.E. with two \$.32 stamps to Burglens 214 Sylva Hwy. Franklin, NC 28734



Better than  
museum quality reproductions.  
Excellent hands on material for students.  
Made with durable plastic resin.  
We have available many fossils,  
petroglyphs and real minerals.

Satisfaction guaranteed!  
Catalogue \$3.00

Send check or money order,  
purchase orders accepted from  
accredited institutions, 30 day net.

Natural History Supply House  
12418 Cornet Dr.  
Sun City West, Arizona 85375  
Mesa, Phon # 1-520-283-6872





## Please ADD the Following NEW OR REJOINING MEMBERS to Your Directory:

Erwin J. Haas  
2150 East Beltline SE  
Grand Rapids MI 49546-1508  
616-942-1271

Physician. Major interest buying & selling invertebrates, selling at a store in Grand Rapids and on internet. Wants to meet and deal with other dealers and collectors.

John Hedley  
12933 NE 128th Place  
Kirkland WA 98034

Paleontologist, Fossil Dealer. Will trade. Interested in all types of fossils, esp. dinosaurs, soft-bodied invert., Mesozoic mammals and Ginkgos. Has extremely diverse material for sale/trade, including the specimens above, trilobites, rare echinoderms and exotic vert. material. Collectors invited to correspond. Avidly collecting since 1980. Wants to share knowledge of sites & tech.

Earl Hoffman  
3087 Woodland Road  
Los Alamos NM 87544  
505-662-7823

Physicist. Will trade. Major interest currently conularids. Has for trade Penn. Marine Invertebrates from NM. Wants to expand his interaction with amateur collectors.

Richard W. Janssen  
335 Hanssler Place  
Peoria IL 61604

Ray Rogers  
Department of Geology  
600 First St. West  
Cornell College  
Mt. Vernon IA 52314  
319-895-0416  
rrogers@cornell-iowa.edu

Assistant Professor. Major interest taphonomy, stratigraphy, dinosaurs. Member of SVP, GSA, AAPG, SEPM, MGS.

## PLEASE NOTE THE FOLLOWING CHANGES OF ADDRESS OR CORRECTIONS:

Samuel J. Ciarca Jr.  
44 Stonington Drive  
Pittsford NY 14534

Major interest eurypterids and fossil scorpions, rare plants, Silurian stratigraphy. Will trade. Publications on eurypterids.

Robert W. Cooper  
5012 Pfeiffer Road  
Peoria IL 61607  
309-697-6076

Collecting since 1940's. Retired. Will trade for sponges, echinoderms, nautiloids, and most invertebrates.

Donna Cummings  
Geological Enterprises, Inc.  
P.O. Box 996  
Ardmore OK 73402

DELETE FROM MEMBERSHIP

Sandy Dengler  
2623 Cypress Ave.  
Norman OK 73072

Jos Eberson  
Pablo Nerudastraat 30  
3573 BS UTRECHT  
HOLLAND 030-721778

Harold & Delma Franklin  
P.O. Box 1023  
Glendive MT 59330-1023  
406-365-6431

Bruce & Charlotte Gibson  
10047 Lakeside Drive  
Cincinnati OH 45231  
513-522-2515

Gerald Gunderson  
6413 Elmwood Ave.  
Middleton WI 53562  
608-836-1389

Phil Liff-Grieff  
2447 Kemper Ave  
La Crescenta CA 91214  
818-541-1232  
PhLG@aol.com

W. S. Lowe  
8610 Ravenswood Dr.  
Granbury TX 76049

Sandford Porter  
16143 State Hwy 86  
Saegertown PA 16433  
814-724-6164

John R. Powell  
240 Post Oak Rd  
Kernersville NC 27284-8027  
910-993-4682

ALBERTA PALAEONTOLOGICAL SOC  
P.O. Box 35111  
CALGARY, ALBERTA  
CANADA T3E 7C7  
403-246-7601

Paul, Darcy, Mike Santangelo  
P&M Prehistoric Life  
RR-1 Box 45AA  
E. Grand Forks MN 56721-9607  
218-773-6613

Vernon L. Swanson  
942 E Wood Haven Dr.  
Alexandria IN 46001  
317-724-2460

Kerry Yellin  
172 N. Lakeshore Drive  
Brookfield CT 06804  
203-775-2125

Collecting since 1965. Toxicologist/Homemaker.  
Will trade. Interested in wide diversity of fossils, esp. echinoderms & trilobites. Enjoy meeting other collectors.

Collecting 41 years. will trade occasionally.  
Major interest, inarticulate brachiopods. Also, well-preserved articulate brachiopods, free from matrix and about one centimeter in size.

Non-profit Administrator. Will trade. Major interest Cenozoic molluscs. Has for trade molluscs and echinoids from So. CA, Tertiary molluscs from WA, TX, HI. Member S. Calif. Paleo. Soc.

Private investigator. Retired from state police. Collecting several years. Interested in all aspects of fossil collecting. Will buy, sell or trade fossils.

Free newsletter sent to MAPS members. We welcome inquiries for information on invertebrate and vertebrate fossils of Western Canada. Field trips held in June, July and August.

Paul--US Army Capt., ret.; industrial technology teacher. Darcy--4th grade teacher. Mike--student (96), Univ. of North Dakota--Paleontology/Geology. Major interest dinosaur material, trace fossils, tracks, amber, plant material. Have for sale dinosaur tracks, amber.

The Mid-America Paleontology Society (MAPS) was formed to promote popular interest in the subject of paleontology; to encourage the proper collecting, study, preparation, and display of fossil material; and to assist other individuals, groups, and institutions interested in the various aspects of paleontology. It is a non-profit society incorporated under the laws of the State of Iowa.

Membership in MAPS is open to anyone, anywhere who is sincerely interested in fossils and the aims of the Society.

Membership fee: One year from month of payment is \$20.00 per household. Institution or Library fee is \$25.00. Overseas fee is \$20.00 with Surface Mailing of DIGESTS OR \$30.00 with Air Mailing of DIGESTS. (Payments other than those stated will be pro-rated.

MAPS meetings are held on the 2nd Saturday of October, November, January, and March and at EXPO in April. A picnic is held during the summer. October through March meetings are scheduled for 1 p.m. in Trowbridge Hall, University of Iowa, Iowa City, Iowa. One annual International Fossil Exposition is held in April.

MAPS official publication, MAPS DIGEST, is published 9 months of the year--October through April, May/June, July/August/September.

President: Marvin Houg, 3330 44th St. NE, Cedar Rapids, IA 52402  
1st Vice President: Dale Stout, 2237 Meadowbrook Dr. SW, Cedar Rapids, IA 52403  
2nd Vice President: Karl Stuekerjuergen, 1503 265th Avenue, West Point, IA 52656-9029  
Secretary: Alberta Cray, 1125 J Avenue NW, Cedar Rapids, IA 52405  
Treasurer: Sharon Sonnleitner, 4800 Sunset Dr. SW, Cedar Rapids, IA 52404  
Membership: Dale Stout, 2237 Meadowbrook Dr. SW, Cedar Rapids, IA 52403

Dated Material - Meeting Notice

Cedar Rapids, IA 52404  
4800 Sunset Dr. SW  
MAPS DIGEST Editor  
Mrs. Sharon Sonnleitner

MID-AMERICA PALEONTOLOGY SOCIETY

CYATHOCRINITES



FIRST CLASS MAIL