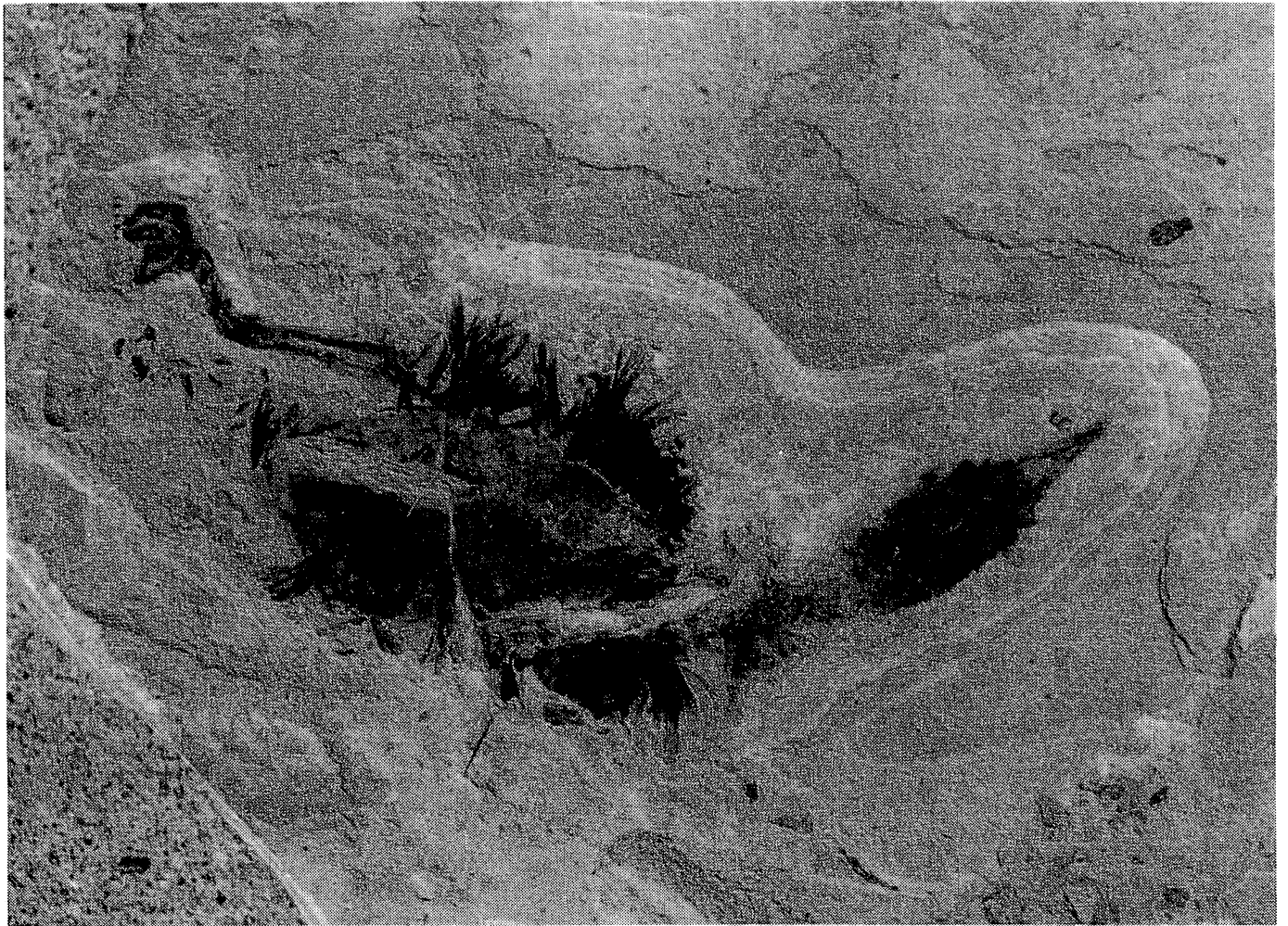


# M.A.P.S. *Digest*

Official Publication of  
Mid-America Paleontology Society

Volume 15 Number 1  
January, 1992



## MARK YOUR CALENDARS

1 FEB MAPS MEETING. Monmouth College,  
Monmouth, IL

1:00 Board & General Meeting  
combined.

2:00 Program: Larry Wiedman will  
be in charge of the program:  
Specimens from Jim O'Daniel's  
Collection. Some of the  
specimens are from Jim's  
great, great grandfather's  
collection and date back to  
the 1800s. (See Below)

24 APR 1992 MAPS National Fossil Expo-  
25 sition XIV--Mollusks  
26

Table reservation forms,  
travel information, and  
motel information appear in  
the January issue of the  
*Digest*.

### \*\*\* 92/01 DUES ARE DUE \*\*\*

Are your dues due? You can tell by checking your mailing label. The top line gives the expiration date in the form of year followed by month--91/01 means 1992/Jan. Dues cover the issue of the *Digest* for the month in which they expire.

We do not send notices but will let you know if you are overdue by highlighting your mailing label on your *Digest*. We carry overdues for two months before dropping them from our mailing list.

Please include your **due date** and **name exactly as it appears on your mailing label**--or include a label.

Dues are \$15 per U.S./Canadian household per year. Overseas members may choose the \$15 fee to receive the *Digest* by surface mail or a \$25 fee to receive it by air mail. Library/Institution fee is \$25.

**Make checks payable to MAPS and mail to:**  
**Sharon Sonnleitner, Treas.**  
**4800 Sunset Dr. SW**  
**Cedar Rapids, IA 52404**

\*\*\*\*\*

### \*FEBRUARY MAPS PROGRAM NOTE\*

Larry Wiedman writes from Monmouth, the site of the February meeting: that you will be thrilled to get not one, but two, guest speakers for the February MAPS meeting. This year MAPS members James O'Daniel and the "good doctor of dead bugs" (as my colleague here calls me), Larry Wiedman, will show many of the specimens from Jim's private collection, and those from the mid-1800's collection of Dr. P. A. Brown of Philadelphia, Jim's great, great grandfather from Franklin Institute (now part of Temple University). This is a super collection. We will talk about the collection itself and also about the importance of saving collections like these. **Hope you all can be here.**

### ABOUT THE COVER

photo sent by Ronald C. Meyer, Boulder, CO

This month's cover features a fossil bird found by Ronald C. Meyer while collecting with fellow MAPS member Jerry Gunderson in the oil shale at Douglas Path, Colorado, in the Green River formation. Ron relates that a leg of the bird was found first, but it was so dark when it was found that the two didn't know what they had until they got back to town and examined it in the light. They returned to the site the following day and searched until they found the rest of the creature, as shown in the cover photo. Ron says only a small part of the bird was exposed.

The Eocene-aged fossil is a baby bird, probably aquatic because of its long neck, but it has not been described. Fish are not commonly found in the area where the bird was discovered, which indicates that it probably lived along the margins of the lake that spanned Colorado, Wyoming, and a small part of Utah 50 million years ago.

### DUES NOTE

A reminder that many members' dues expire in December. Check you label. This is also the time to send changes for the Directory. Send them early!

Please don't wait until EXPO to pay your dues. There are so many different things going on there and so many different people manning the desk that it's very easy to make mistakes. Dues are generally processed and reflected on your label up to 14 days before the *Digest* is mailed. If you notice an error, please let met know so it can be corrected.

**EXPO XIV - MOLLUSKS**

It is once again January and time to make your plans to attend EXPO. All reservation, travel, and lodging information is in this issue. Registration form--page 8.

The keynote speaker Friday night will be Dr. John Pojeta from the Smithsonian Institute. He will speak about Mollusk Evolution. Saturday night brings the return of the live auction. This year's proceeds, for the third consecutive year, will go to the Paleontological Society for graduate research scholarships. Sunday, Bruce Stinchcomb, St. Louis (MO) Community College, will present a seminar on mollusks. Please make reservations for the seminar if you want to attend.

Maggie Kahrs is editor of the EXPO edition of the *Digest*. As most of you know, the EXPO edition is a greatly expanded issue. If any of you with expertise on mollusks would like to contribute an article or know of someone who would, please contact Maggie  
\*\*\*\*\*

**HELP PROMOTE FOSSIL STAMP ISSUE**  
by Tony Verdi

For several years, I have requested that the postal service issue four stamps depicting some of our early fossils. In 1974 a beautiful block of stamps showing minerals was issued. In 1989 a block of four prehistoric animals of the Mesozoic era was issued.

I still believe that stamps depicting the early, small fossils should be the next step. Common fossils such as ferns, trilobites, crinoids, ammonites and brachiopods should be considered. These could be shown in early reconstructed scenes or as fossil remains today.

I ask interested collectors (Stamps and Rocks) to write to the Postal Service's Citizens Stamp Advisory Committee and request that our fossil heritage be recognized. Write to: U.S. Postal Service  
Citizens Stamp Advisory Committee  
Room 5800  
475 L'Enfant Plaza West. SW  
Washington, D.C. 20260-6352

**EXPO TABLES, ETC.**

(Repeated from Last Issue)

The table situation at EXPO was discussed at length at the December MAPS meeting. Several decisions were made in an attempt to keep table distribution equitable and allow as many people as possible to obtain tables:

1. There will be a limit of 2 tables per **person**. Exhibitors are encouraged to keep boxes under tables and bring out new specimens when others are sold. (This is the procedure used in Europe where space is sold by the meter.) A great effort will be made to limit tables to 4 per **family or group**. (We reserve the right to arrange tables as we see fit rather than by request.)
2. Anyone with special needs that would require more than 2 tables (such as the book dealer) may apply to the Board for an exception. Again the upper limit is 4. Requests must be made by March 1 and will be acted on as soon as possible after they are received. All decisions will be made by March 7.
3. Tables in the Ballroom will cost \$15 each. Tables in the Lobby will cost \$15/table/day with no security and will be used only for overflow. MAPS will not provide storage for Lobby tables.

Also, a reminder that each exhibitor is asked to donate a quality specimen for Saturday's auction. Profits go to the Paleontological Society for a scholarship, so please be generous with your donation.  
\*\*\*\*\*

**MEET YOUR NEW OFFICERS**

The following have been elected officers of MAPS for 1992 by unanimous ballot:

~ President.....Marv Houg  
1st Vice President.....Lyle Kugler  
~ 2nd Vice President.....Allyn Adams  
~ Secretary.....Jo Ann Good  
~ Treasurer.....Sharon Sonnleitner  
Director.....Randy Wheeler  
Other Directors are: ~ Peggy Wallace (exp. '93) and ~ Doug DeRosear (exp. '92).

We thank last year's officers for the time and effort they have given to MAPS.

**DOMINICAN AMBER**

by Richard Trexler

721 NW 14th Court, Miami, FL 33125

The largest source of Amber in the New World is the Dominican Republic. The Taino Indians discovered this amber in the Northern Highlands long before Columbus arrived in the New World. When he arrived, a Taino chief gave Columbus a string of amber beads his tribe had gathered and polished, making amber the first gemstone "found" in the New World by its conquerors. The largest deposit of Dominican amber is located in the mountains behind Puerto Plata near where I live.

About ten years ago, I read the excellent article on insect inclusion amber in the September 1977 National Geographic magazine and decided to move to the Dominican Republic to learn the amber business. Today, I market amber for two groups of artisans who joined forces as Cooperativa La Isabela. I bring amber jewelry and over two thousand amber fossils to Miami every six weeks.

Unlike Baltic Amber, which is about 40% opaque, Dominican amber is almost always clear. Most Dominican amber is yellow, orange, or amber colored. Rarer colors include clear/white, lemon, green, and (my favorite) red. The most unusual color in any amber is the very rare blue amber illustrated in the National Geographic article.

Because of its clarity, the insect inclusions in Dominican amber can be clearly seen. Ants and flies are the most common inclusions, followed by mosquitoes, winged ants and a host of other "bugs." Spiders, scorpions, and (extremely rare) small lizards can command many thousands of dollars from avid collectors. Botanical inclusions include leaves, stems, twigs, and more rarely, seeds, buds, and flowers.

Amber is tree sap which attracts the insect with its smell, traps, and then covers the insect with successive flows. Dominican amber petrified over 35 million years. When dirt, dust, or pollen adhered to amber, defining the layers, we have what we call layered amber. When the successive layers are in different colors, we have a beautiful rarity. In a mining district called La

Toca, we find amber stalactites, which miners call "tubos o cigarros de ambar." When a La Toca tube is viewed in cross section with a loupe, one will see a glorious sunburst of color.

Sometimes viscous amber was rained upon; the crater which formed was covered by more resin, entombing an air bubble in a water bubble. The air bubble moves, creating an amber enhydro I call Carpenter's Level amber.

Fossils can be beautiful, but can they be fun? I think so, and I hope you will agree when you learn of my discovery of a new mineral (or is it vegetable?) imbedded in amber. I have named my discovery turdite, and it is indeed petrified insect (and occasionally mouse or rat) fecal debris. My Dominican wife likes to tell the neighbors turdite put the rice and beans on our table.

Just one more serious point: I have just about arranged with a young Dominican miner from the Del Valle district to open up an amber mine for visiting group(s) who may want to try prospecting for amber. Details on request.

---

**RARE DINOSAUR BONES FOUND IN WYOMING**  
from articles in *The Sheridan Press*,  
Sheridan, WY, and *Tribune*, Great Falls, MT,  
September 24, 1991  
sent by David Jones, Worthington, MN

Graybull, Wyoming, is the site of an exceptional allosaur find. The remains are considered rare because the skeleton is relatively complete, according to Brent Breithaupt, a University of Wyoming museum curator who will collaborate with a team from Montana State University.

The allosaur is a carnivorous dinosaur of the Jurassic period, predating *Tyrannosaurus rex* by about 80 million years. Like *tyrannosaurus*, the allosaurus stood on its two hind legs and had razor-sharp, serrated

**NEBRASKA DIG SITE**  
**from material submitted by Ed Armentrout**  
**Hot Springs, SD**

A fellow named Milton Arner, who lives near Whitney, Nebraska, owns vertebrate fossil producing land near Toadstool Park in the Oglala National Grasslands north of Crawford, Nebraska. During 1991 Milton opened the fossil-bearing 200 acres to a fee dig. Cost is \$25 per day per person.

Prospects should call him well in advance (308-667-2571) to advise of arrival date/time, and he will likely meet them in Crawford and escort them north to the site. Some great fossils have come out of the area. (Ed) called Milton on 9-26-91 and asked him if he could handle a lot of diggers and he said he would try. He had 11 people hunting that day.

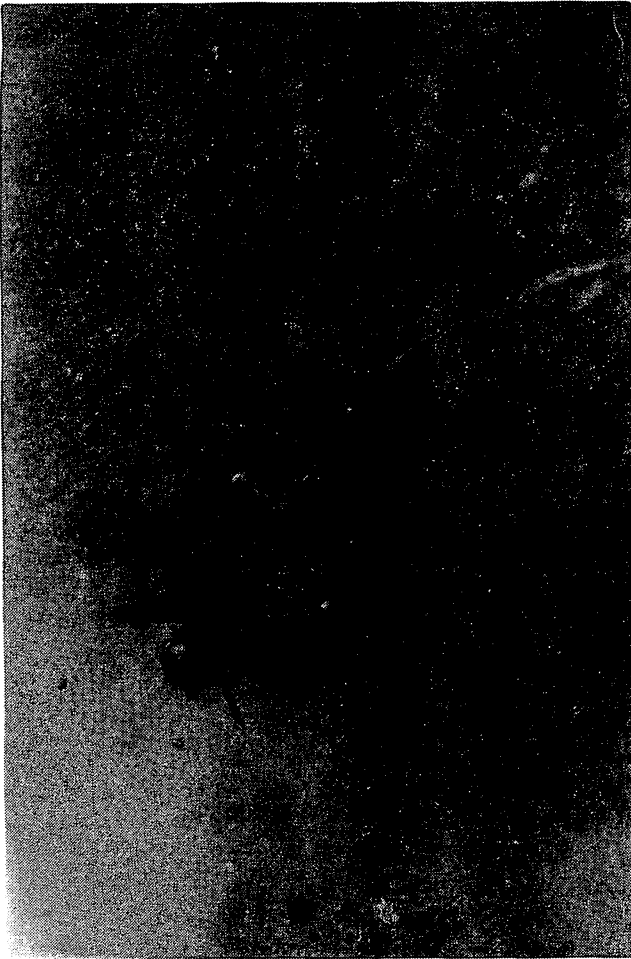
Collectors should not go when the ground is wet since the soil is gumbo. They are also advised to wear leather footwear and take their own tools and personal items. No restrooms, food/water, etc., are available at the site.

It would also be advisable to get a copy of the Oglala National Grasslands map, either from a ranger station at Chadron or from Ed's Village Rock Shop, since rangers patrol the surrounding public land looking for fossil scavengers.

tail vertebrate were visible. The pelvishad come apart, but it was there.

Excavation was expected to take about a week. The skeleton will be cleaned and stabilized for preservation and study. Molds and casts will be made of all the bones for display and study, and the University of Wyoming's Geological Museum will receive a full cast of the bones. The remains will be sent to the Museum of the Rockies because of its experience with similar finds. It is estimated that it will take a year or two to clean up the fossilized bones and put them together.

The area where the fossil was found is well-known by paleontologists, who have discovered hundreds of remains there since 1934, according to the BLM.



The above photo of 2 winged ants frozen in time was sent by Ralph G. Roberts, Rolla, MO.

DOMINICAN AMBER; 40,000,000 yrs. old;  
 ORDER: Hymenoptera; FAMILY: Formicidae;  
 Lower Miocene; specimens 3 mm.

teeth that it used to rip apart its prey. "This is the most complete carnivorous dinosaur found in Wyoming," (Breithaupt) said. "It is also a unique specimen because the bones are articulate, all attached."

A team of Swiss paleontologists, working on what they thought was private land, unearthed the remains from 200 to 300 feet inside a parcel of public land administered by the BLM, so the allosaur belongs to the federal government. Paleontologists from the University of Wyoming, MSU and Canada's Royal Tyrell Museum examined the remains. They said the dinosaur was laid out with the neck curving backward and the tail wrapped around the body. A leg, skull and

**HOW DOES YOUR FOSSIL CLUB OPERATE?****by David Peters****1208 DuBois Ct., St. Louis, MO 63122-55190**

The St. Louis fossil club (aka Eastern Missouri Society for Paleontology) is a great place to get in touch with fossils. Many of the members are experts in various specialties and are quite willing to share their experiences and knowledge with others. Our monthly get-togethers often turn into fascinating eye-openers.

The St. Louis fossil club also has its troubles. If the problems we're experiencing here in St. Louis are common around the country, an airing of those problems and the helpful suggestions I expect to hear from those who read this letter should turn bad to good and good to better.

1.. We have trouble getting officers. What do other clubs do to generate enthusiasm for these posts? Incentives? Privileges? Are the same people officers year after year, and how do these leaders feel about it? Do you pay your officers?

2. Our club time is generally divided into a social "show and tell" time, followed by a short business meeting, followed by a speaker or program (sometimes a video of a previously aired television program). We seem to be running out of speakers and ideas; any suggestions? Do you pay your speakers?

3. Our dues are less than \$10 per year. How does that compare?

4. Our only publication is a monthly flyer containing only the minutes of the last meeting, a few notes and an invitation to the next meeting, highlighted by the planned program. It arrives the week of the meeting. How does that compare? We do not advertise or appear in any published "calendars."

5. We generated a lot of outside excitement with a fossil auction and raised quite a bit of money--once. Now, no one is interested. We have a large bank account but have no special plans on how to spend the money, other than daily petty cash outlays. Any suggestions?

6. We have one or two field trips a year, and club members pair off for other excursions. How does this compare?

7. Our mailing list is greater than 50 families. Generally 35 People show up, but that number skyrocketed to 100 following a newspaper story. Typically 1 to 5 new members join each month, but we're not seeing some old regulars. How does this compare?

8. I would guess less than 15 of our members belong to MAPS, and only 2/3 of them make the pilgrimage to Macomb every April. How does that compare?

9. Only 4 members of our club belong to various professional paleontological societies. How does that compare?

10. Many of our members are rather green about collecting. Others are experts. Some of them are glad to share locality information; others keep their secrets to themselves. Sorry, I do believe I've just described the breadth of human nature. Is it the same as where you live?

11. How are the younger members of the club treated? Age limits?

12. Where do you meet? We use a university classroom. Our science center would charge \$50 a night (for a 50-seat room), plus we'd have to purchase a million dollar bond as insurance against liability.

13. Our club has a library of paleo books locked in a cabinet in the classroom. Library privileges have to be purchased, but the amount is totally refundable. Nevertheless, almost no one uses the library. How do others operate their libraries?

14. What are your best suggestions for making the meetings more exciting or fascinating? How about around Christmas time?

I hope this letter generates a lot of response. If you mail your response to me, I'll gather the best ones together in a future letter.

**NATIONAL FOSSIL EXPOSITION XIV - 1992**

**LOCATION AND TIME** EXPO will be held at the Student Union, in the Grand Ballroom, on the campus of Western Illinois University, Macomb, Illinois. The simplest way to the site is to turn off IL 67 west on University Drive, then go south to the Union. (Follow the signs.) Set-up is permitted on Friday, April 24, at 8:00 a.m.

EXPO HOURS: Friday, April 24 - 10:00 a.m. - 6:00 p.m.  
 Saturday, April 25 - 8:00 a.m. - 5:00 p.m.  
 Sunday, April 26 - 8:00 a.m. - 3:00 p.m.

**TRANSPORTATION** There are 2 highways leading into Macomb - IL 136, an east-west route, and IL 67, a north-south route.

There is no plane service to Macomb at this time, but we will help to arrange transportation from Moline, IL, airport if you will make **ADVANCE** arrangements with Mrs. Gerry Norris, 2623 34th Ave. Ct., Rock Island, IL 61201 (309-786-6505), or Mrs. Madelynne Lillybeck, 1039 33rd St. Ct., Moline, IL 61265 (309-764-0921). Or you can fly into St. Louis, MO, or Peoria, IL, and rent a car and drive to Macomb.

**LODGING** Persons traveling in self-contained camping units may park on the parking lot. See Public Safety located in the Union. **IDENTIFY WITH MAPS.**

**Macomb area code - 309**

**Macomb zip code - 61455**

(prices subject to change)

**Starr Motel** - Hwy 67 S and 136 E  
 837-4817 1507 E. Jackson Rd.  
 Single \$20.71  
 (per night) 2(one bed) 23.98  
 (plus tax) 2(two beds) 27.25  
 3(two beds) 30.52

**Time Out Motel** - Hwy 67 North  
 837-4838 311 University Dr.  
 Single \$27.25  
 (per night) 2(one bed) 30.52  
 (plus tax) 2(two beds) 32.70  
 3(two beds) 35.97  
 4(two beds) 39.24

**Holiday Inn** - 1400 N. Lafayette - 833-5511 or 1-800-HOLIDAY  
 Single \$51.23 Each additional up to 6: \$6.00.  
 King 55.59 (plus tax)

**Travel Inn** - Hwy 136 W.  
 833-4521 1414 West Jackson  
 Single \$28.34  
 2(one bed) 30.52  
 2(two beds) 38.15  
 3(two beds) 40.82  
 4(two beds) 43.60

**Super 8** - 313 University Drive: '91 RATES  
 836-8888 **PRICE INCREASE APRIL '92**  
 Single \$36.93  
 2(one bed) 40.20  
 2(two beds) 44.56  
 3 48.92  
 4 53.28

**Olson Hall** - on Western IL U. Campus within walking distance; (linens, etc., supplied). **ZIP 61455**  
 298-3500

Desk Motel room with bath down hall - one bed \$29.93 (Dbl.)  
 Dorm style with bath down hall - 1(two beds) No info  
 2(two beds) 22.80

**Union** - Contact Gil Norris, 2623 34th Avenue Ct., Rock Island, IL 61201 (309-786-6505) **OR IN MAR.** contact Allyn Adams, 612 West 51st St., Davenport, IA 52806 (319-391-5443) to see if rooms are available. If rooms are available, send payment, payable to MAPS to Doug DeRosear, Box 125, Donnellson, IA 52625.

**DO NOT CONTACT** Western Illinois University. These rooms must be rented for both Friday and Saturday. You must request rooms early and pay for them before March 30, 1992. You may wish to be on standby.

Single \$64.32 (weekend) 3 people \$ 99 20 (weekend)  
 Double 89.38 (weekend) 4 people 108.80 (weekend)

**DON'T FORGET - In all cases identify with MAPS.**



**PARKING**

For those living in the Union, parking will be east of the Union with room permits. For others, get visitor permits from Public Safety. Parking in specified lots. After 5:00 p.m. Friday ample parking. Before 5:00 p.m. - patience needed.

**MEALS**

Meals are available in the Union: fast food in the lower level and a deli in the basement. Ice cream is also available! There are many restaurants in town and a deli bar in a nearby grocery store.

**EXPO REGULATIONS**

Everyone is requested to make advance registration by March 30, 1991. Mark your calendars now so you don't forget! Send registration forms found on page 8 in the *Digest* with your requests for tables, display space, Union housing reservations (if available). Send these forms and your checks made payable to MAPS to: Doug DeRosear, Box 125 Donnellson, IA 52625. Please send **dues to Treasurer** before EXPO - it is a lot of extra work for us to accept them at EXPO.

**ALL TABLES WILL BE ASSIGNED.**

If you want to be next to someone or specifically located, please say so when you send your money. (We reserve the right to arrange tables as we see fit to enforce table limits.) Cost of the tables is \$15.00 each for a 6' table in the Ballroom for the weekend; \$15/table/day in the Lobby. (Lobby tables will be used only for overflow.) Half tables may be rented for \$8.00. **MAXIMUM of 2 tables per person initially.** Over 2 tables wanted? You may request extra tables, and if they are available you will be notified after March 15th (pay for these at EXPO). Requests for extra tables will be filled in rotation--one table per person per round until all space is gone. Also, those with special needs for more than 2 tables may apply to the Board by March 1 for an exception. All decisions will be made as soon as possible, with all decisions made by March 7. **(No more than 4 tables will be allotted to a person, family or group, whichever is the larger unit.)**

The Committee insists that all materials be fossil or fossil related. Mountings, gemstones, minerals, Indian relics, etc., are not permitted!

**DISPLAYS**

EXPO is special because of displays. They are a gift. They give us all a look at the ancient epochs of the world. Display tables are provided at no cost - 8 ft. limit. If you need more space, please contact Doug DeRosear.

---

**ALL RESERVATIONS WILL BE ACKNOWLEDGED**

---

**OTHER ACTIVITIES**

**MOLLUSKS** will be this year's theme. **Keynote Speaker** will be Dr. John Pojeta, Smithsonian Institute, on Mollusk Evolution--7:45 p.m. Friday. A **live auction** will follow a short business meeting and awards presentation on Saturday evening. Proceeds go to a geology scholarship. Everyone is asked to provide a quality specimen, with full data and the name of the fossil donor. Specimens can be left at the information desk until 3:00 p.m. Saturday. If you wish to mail a specimen, send it with pertinent information to Paul Rechten, 7405 Shields, Harvard, IL 60035. Paul will send a postal acknowledgment on receipt of specimen. A **seminar** on mollusks will be given by Dr. Bruce Stinchcomb, St. Louis (MO) Community College, beginning at 9.00 a.m. Sunday. Reservations required.

---

Show Chairman ...Gil Norris, 2623 34 Ave. Court, Rock Island, IL 61201	(309) 786-6505
Table Reservations...Doug DeRosear, Box 125, Donnellson, IA 52625	(319) 835-5521
Auction...H. Paul Rechten, 7405 Shields, Harvard, IL 60035	(315) 943-4178
Publicity...Tom Witherspoon, Sr., 6611 Miller Road, Dearborn, MI 48126	(313) 582-3139
EXPO DIGEST editor...Maggie Kahrs, R.R. 7, Box 199, Seymour, IN	(812) 522-6093



**Please ADD the Following NEW OR REJOINING MEMBERS to Your Directory:**

Don Badman  
1051 Hunter Hill Dr.  
Lansdale, PA 19446

Collecting since 1961. Major interest is plant fossils.

Clay Davis  
27924 S. 120th Ave.  
Peotone, IL 60468  
815-478-3903

Maurice (Maury) E. Kaasa, Jr. Grad. student (dissertation on Permian gastropods)  
Department of Geology Will trade. Major interest upper Paleozoic, Mollusca, esp. Gastropoda. Can obtain Stone City & Crockett  
Texas A & M University Eocene (mollusks, etc.), Cretaceous echinoids, and  
College Station, TX 77843-3115 some Penn. (TX) and Permian (TX and western states)  
409-846-1973 mollusks and brachiopods.

Ed Kerber  
1128 Pleasant Valley Rd.  
Suite #117  
Parma, OH 44134

S. Kathleen Steere  
406 East Center Street  
Fairfield, IL 62837  
618-842-2499

Comm. College geology instructor. Heard about MAPS from Dr. Dwayne Stone.

Tim Stenerson  
1527 1/2 W. Main St.  
Red Wing, MN 55066

**PLEASE NOTE THE FOLLOWING CHANGES OF ADDRESS OR CORRECTIONS:**

David M. Cassel  
408-761-7686

Frederic J. Collier  
Museum of Comparative Zoology  
Harvard U., 26 Oxford St.  
Cambridge, MA 02138

Jeff Grieff  
6246 7th NW  
Seattle, WA 98107

Watchmaker. Major interest Tertiary marine fossils. Will trade. Wants information on preparation techniques.

Kurt Henne  
GERMANY  
0-711-2569585

Charles & Pat Howlett  
640 Iris Road  
Casselberry, FL 32707  
305-834-3750

Earth Science Lecturer/P.H. Nurse. Will trade. Especially interested in all types of material that lends itself to my slide programs--vis. dinosaur material--cave material--saber tooth cat and other cats. Will also trade for slides of good dioramas of dinosaurs or slides of cats.

Phil Liff-Grieff  
2714 Cunard St.  
Los Angeles, CA 90065

Administrator for non-profit organization. Will trade. Major interest Pleistocene and Tertiary marine fossils. Has for trade fossils from S. CA and WA state--Pleistocene, Miocene, Oligocene, and Eocene mollusks, echinoids, etc. Member S. Cal. Paleo. Soc.

John B. Pate  
P.O. Box 3578  
Humble, TX 77325-5378  
713-358-3506

Marty Sutherland- Voght  
126 Sage Dr.  
Rt. 1, Aspendell  
Bishop, CA 93514

# NATIONAL FOSSIL EXPO XIV- REGISTRATION FORM

Please complete the form below, enclose a **check payable to MAPS**, and mail to **Doug DeRosear, Box 125, Donnellson, IA 52625**, before March 30, 1992.

NAME: \_\_\_\_\_ PHONE NO.:(\_\_\_\_\_) \_\_\_\_\_

ADDRESS: \_\_\_\_\_ CITY \_\_\_\_\_ STATE \_\_\_\_\_ ZIP \_\_\_\_\_

\_\_\_\_ Yes, I will provide a display for EXPO. It will require \_\_\_\_\_ linear feet of table space - 8 ft. maximum display.

\_\_\_\_ I request \_\_\_\_\_ (number) of 6 ft. tables for selling and swapping. Cost is \$15.00 per table. 1/2 table is \$8.00. 2 tables/person maximum initially; Maximum limit of 4/family or group in all. Check enclosed: \$\_\_\_\_\_(Only send payment for up to two tables per person; those assigned on a rotating basis of 1 per person per round if available or by board exemption will be paid for at time of notification or at EXPO.)

\_\_\_\_ Number of chairs I will need.

\_\_\_\_ I request to be next to \_\_\_\_\_ for my sell/swap table. (Requests not guaranteed.)

\_\_\_\_ I request reservations for the Sunday morning seminar for the following:

\_\_\_\_ Will you help run EXPO?

Front desk--Fri \_\_\_\_\_ a.m. \_\_\_\_\_ p.m. \_\_\_\_\_ evening  
Sat \_\_\_\_\_ a.m. \_\_\_\_\_ p.m.  
Sun \_\_\_\_\_ a.m. \_\_\_\_\_ p.m.

Elevator--Friday: 9-10, 10-11, 11-12, 12-1, 1-2, 2-3.  
Sunday: 11-12, 12-1, 1-2, 2-3

**NO ONE EXCEPT THE GUARD IS ALLOWED ON THE FLOOR FOR ANY REASON AFTER HOURS!**

The Mid-America Paleontology Society (MAPS) was formed to promote popular interest in the subject of paleontology; to encourage the proper collecting, study, preparation, and display of fossil material; and to assist other individuals, groups, and institutions interested in the various aspects of paleontology. It is a non-profit society incorporated under the laws of the State of Iowa.

Membership in MAPS is open to anyone, anywhere who is sincerely interested in fossils and the aims of the Society.

Membership fee: One year from month of payment is \$15.00 per household. Institution or Library fee is \$25.00. Overseas fee is \$15.00 with Surface Mailing of DIGESTS OR \$25.00 with Air Mailing of DIGESTS. (Payments other than those stated will be pro-rated.)

MAPS meetings are held on the 1st Saturday of each month (2nd Saturday if inclement weather). October & May meetings are scheduled field trips. The June meeting is in conjunction with the Bloomington, IN, Gem, Mineral, Fossil Show & Swap. A picnic is held the fourth weekend in July. November through April (except February) meetings are scheduled for 1 p.m. in the Science Building, Augustana College, Rock Island, Illinois. The February meeting is held at Monmouth College, Monmouth, Illinois. One annual International Fossil Exposition is held in the Spring.

MAPS official publication, MAPS DIGEST, is published 9 months of the year--October through June.

President: Marvin Houg, 3330 44th St. N.E., Cedar Rapids, IA 52402  
1st Vice President: Lyle Kugler, 612 8 E. 3rd St., Aledo, IL 61231  
2nd Vice President: Allyn Adams, 612 W. 51st Street, Davenport, IA 52806  
Secretary: Jo Ann Good, 404 So. West 11th St., Aledo, IL 61231  
Treasurer: Sharon Sonnleitner, 4800 Sunset Dr. SW, Cedar Rapids, IA 52404  
Membership: Tom Walsh, 501 East 19th Avenue, Coal Valley, IL 61240



## CYATHOCRINITES

FIRST CLASS MAIL

MID-AMERICA PALEONTOLOGY SOCIETY

Mrs. Sharon Sonnleitner  
MAPS DIGEST Editor  
4800 Sunset Dr. SW  
Cedar Rapids, IA 52404

Dated Material - Meeting Notice