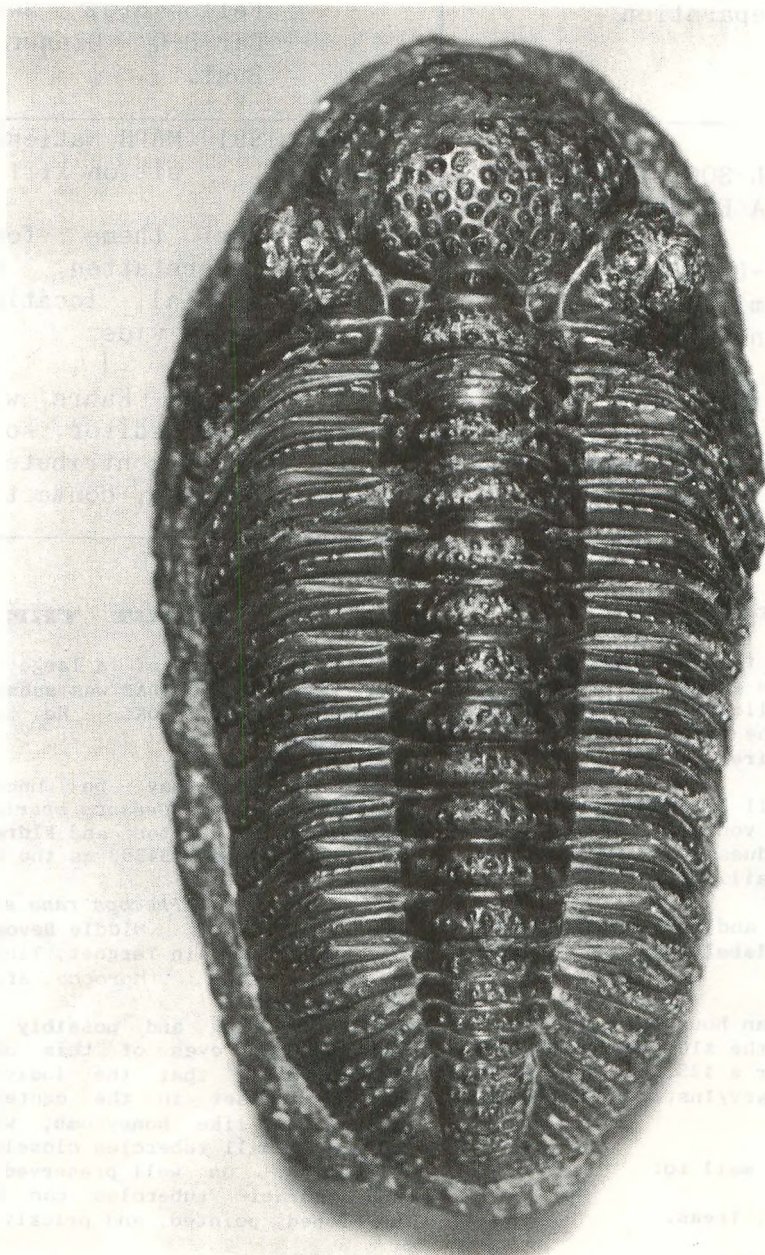


M.A.P.S. *Digest*

Official Publication of
Mid-America Paleontology Society

Volume 13 Number 5
May, 1990



MARK YOUR CALENDARS

<p>29 JUL MAPS SUMMER PICNIC & MEETING Doug DeRosear Residence, 103 S. Oak St., Donnellson, IA (1 block east of four-way stop) (319) 835-5521</p> <p>11:00-- Meal at 12:00--Bring a covered dish. Camping Available at Local Parks. Fossil preparation displays.</p>	<p>2 NOV FOSSILMANIA VIII 3 AUSTIN PALEO & DALLAS PALEO SOC. 4 Oakdale Park, Highway 144 South, Glen Rose, TX.</p> <p>Joan Crane, show chairman. 1603 Twilight Ridge, Austin, TX 78746. (512) 327-4005</p> <p>RV hookups, Cabins, Campsites, Fellowship, Swapping, Selling, Bar-B-Q Dinner, Baked Potato Bust.</p>
<p>5 OCT BONE VALLEY FOSSIL SOCIETY, INC. 6 6 7TH ANNUAL FLORIDA FOSSIL FAIR 7</p> <p>Best Holiday Trav-L-Park & Campground. 2.6 miles east of Cypress Gardens on S.R. 540 or one mile west of U.S. 27 on S.R. 540, Winterhaven, Florida.</p> <p>Public Invited; Free Admission; Dealers; Displays; Concessions.</p>	<p>19 APR 1991 MAPS National Fossil Expo- 20 sition XIII--Lagerstatten 21</p> <p>The theme for EXPO XIII is Lagerstatten, which means very special locations of fossils world wide.</p> <p>Maggie Kahrs will again be the EXPO editor, so if you would like to contribute to the EXPO edition, contact her.</p>

*** 90/05 DUES ARE DUE ***

Are your dues due? You can tell by checking your mailing label. The top line gives the expiration date in the form of year followed by month--90/05 means 1990/May. Dues cover the issue of the *Digest* for the month in which they expire.

We do not send notices but will let you know if you are overdue by highlighting your mailing label on your *Digest*. We carry overdues for two months before dropping them from our mailing list.

Please include your **due date** and your **name exactly as it appears on your mailing label** (or just include a label).

Dues are \$10 per U.S./Canadian household per year. Overseas members may choose the \$10 fee to receive the *Digest* by surface mail or a \$25 fee to receive the *Digest* by air mail. Library/Institution fee is \$25.

Make checks payable to MAPS and mail to:

Sharon Sonnleitner, Treas.
4800 Sunset Dr. SW
Cedar Rapids, IA 52404

ABOUT THE COVER

The cover photo of a large, 6 1/4 inch trilobite of the family PHACOPIDAE was submitted by Tony B. Raines, Oklahoma City, OK. He included the following information:

Classification may be uncertain--some Europeans designate it as *Geesops sparinosus*--but it has been described by Burton and Eldredge, *Paleontology*, Vol. 17, Pt. 2, Page 349-363 as the subspecies

Phacops rana africanus
Middle Devonian
Ain Terguet, Tindouf Basin
Morocco, Africa

An interesting and possibly unique feature of the schizochroal eyes of this ornamented, bulbous-nosed trilobite is that the individual, convex eye-lens units are set in the centers of hexagonal prisms structured like honeycomb, with raised scleral walls bearing small tubercles closely paired in the sagittal direction. On well preserved specimens the glabellar and thoracic tubercles can be seen to be highly developed, pointed, and prickly.

References:

Moore, R.C. 1959. Treatise on invertebrate paleontology, Pt. 0, Arthropoda. Geological Society of America, University of Kansas Press.

MAPS EXPO VIII Edition, Vol. 9, Numbers 4 & 5.

EXPO XII--LEAVES AND GRASSES

Well, another EXPO has come and gone, and each year it just keeps getting better. Our guest speaker, Dr. Francis Hueber, from the Smithsonian, gave an enlightening keynote address on plants Friday evening. Saturday afternoon, forty members attended the explanation and discussion of the new Illinois law regarding restrictions on antiquities, artifacts and fossils, given by Dr. Russ Graham, Curator of Geology of the Illinois State Museum. (For more information on the law see p. 3-4 of the *Digest*.) The annual business meeting, followed by the annual live auction occupied many Saturday evening. And Sunday morning about 30 people were able to attend a plant workshop, the first workshop held at EXPO.

At the business meeting a recommendation to raise annual membership dues to \$15.00 was endorsed by the members present. The recommendation was made because of rising postage and paper costs and because proceeds of the EXPO auction of specimens donated by those who attend EXPO are currently used to subsidize the cost of producing and mailing the *Digest*. It is felt that rather than have a small percentage of the membership subsidize those costs, it would be better to use the proceeds of the auction to support educational efforts, such as scholarships. The Board will now act on the matter.

John Boland reported on the BLM committee meeting held in Boulder, CO, in December, 1989. John was one of three amateurs invited to attend the meeting where 10 guidelines for collecting on BLM land were recommended. He has written (and continues to write) several reports on the proceedings for the *Digest*.

Karl Stuekerjuergen reported on the GSA and ANAPS meeting he and Doug DeRosear attended

CHILD'S TOYS LOST AT EXPO

Jessica Kendrew, 8, lost 2 dinosaurs, 1 white bunny and 1 tan sabre cat--stuffed animals--at EXPO. They were left in a box on the loading dock. If you found them among your fossils when you got home, please contact Eric Kendrew (813-681-4350) or mail to 4436 Tevalo Dr., Valrico, FL 33594. The Kendrews will pay postage.

as MAPS delegates in St. Louis, MO., in November. Dr. Gary Lane was very helpful and will attend the GSA meeting in Dallas, TX, in 1991. MAPS will assist, if asked, at the ANAPS meeting in Chicago in 1992.

Marv Houg thanked all members who sent letters in support of the Rockford Brick and Tile project. Wayne Meyers, Director of the project, said that not only was the project approved, having received more points than any other proposed project, but the stack of letters accompanying the proposal was thicker than the proposal itself. As a result, the state is considering limiting the number of letters accompanying a proposal.

Ernest Hammons, winner of the 1989 Strimple Award (and MAPS nominee), spoke about Onsbys and his honor of accepting the award at the GSA meeting in St. Louis, MO, in November. He thanked MAPS for 12 wonderful years of collecting with wonderful people and said the award was the highlight of their life.

Awards were presented to the following:

Theresa Sonnleitner, age 8, (leaf fossil) for stuffing about 250 EXPO *Digests* by herself.

Paul Rechten (President's Award) for his work in organizing the EXPO auctions over the years.

Karl Stuekerjuergen (Don Good Award) for all his work in the years we have known him.

Peggy Wallace (Past President Award). Peggy thanked everyone for his/her willingness to help, which makes it a pleasure to work with an organization like MAPS.

Following the business meeting Jim Konecny and Doug DeRosear (replacing Denny Kingery, who was unable to attend EXPO this year) presided at an entertaining evening of auction bidding. They were assisted by Jim Pickering and Ken Smith. Proceeds of the auction totaled \$2,081.

BELGIUM NEWSLETTER SEEKS ENGLISH PAPER

Roger E.J. Leemans, editor of the Belgium newsletter "Lithorama," writes that he should be very pleased to receive a paper in English about fossils in the U.S. to be published in his newsletter. Contact him at 36, F. Delhasse str., B 1060 Brussels, Belgium.

NEW ILLINOIS FOSSIL LAW REVIEWED

by John Boland, MAPS member

Many fossil collectors read the new law (SB 467) and concluded that the State of Illinois required a permit to collect fossils on state-owned lands and that most of the fossils would end up in the state museum. At the MAPS EXPO, Dr. Russ Graham, Curator of Geology, Illinois State Museum was invited to explain the new law. He wrote the law draft and is now writing the guidelines to accompany the law.

Dr. Graham stated that amateurs are free to collect fossils on state-owned lands without a permit if they are picked up on the surface. He explained that most of these fossils would deteriorate and they realize that in the past, amateurs have saved them for museums, schools, and private collections. The state wants to preserve the fossils that are below the surface and obtain the scientific data when they are collected. A permit is required to excavate fossils in known paleontological sites and most permits will be reserved for geologists and paleontologists. The fossils become the property of the state and may be studied before the fossil and report are submitted to the State Museum. The location of known sites (past and future) will be published in many periodicals (incl. Illinois Register) and hobby magazines, and the sites may also be posted (for out-of-state collectors and the uninformed). Local law-enforcement will patrol the sites and violators shall be subject to imprisonment and a fine not in excess of \$5000.

It will take about 2 months to prepare the guidelines and Dr. Graham welcomes your comments. ... There was some concern by fossil collectors that local law enforcement may not have a copy of the guidelines when they check you at roadcuts etc. It would be wise to carry a copy of the guidelines until they are well understood.

Some of the teaching geologists are concerned that fossils dug during field trips do not become part of the school property. For this reason, they are backing a revision (HB 3242) to the current law that will eliminate the reference to "paleontological resources."

**MEMORANDUM CONCERNING
NEW ILLINOIS FOSSIL LAW**

The Illinois Legislature has passed the Archaeological and Paleontological Resources Protection Act (Public Act 86-459). This act provides protection for significant and known paleontological sites in the State of Illinois. It is not a "blanket act" for all paleontological resources on public lands. I have been asked by the Illinois Historic Preservation Agency (IHPA), the managing and enforcement agency for this act, to develop guidelines for the implementation of this new law. (The proposed guidelines are on the following page. *ed.*) I like to work with professional and amateur paleontologists in formulating the final guidelines. Therefore, I would like to solicit any comments or suggestions that you may have...Send your comments, suggestions and any other requests to me at: Dr. Russell W. Graham, Research and Collections Center, Illinois State Museum, 1920 10¹/₂ Street South, Springfield, IL 62703. (217) 785-4844.

**OKLAHOMA HAS FOSSIL REGULATION LAW, TOO
excerpts from *Daily Oklahoman*, 3/2/88
sent by Tony Raines, Oklahoma City, OK**

A bill aimed at keeping Oklahoma's fossils in the state by regulating excavations on private and public land was passed Tuesday by the Oklahoma House.

The bill...would create a state board to issue permits for excavations. ...

The board would charge a \$25 fee for excavation permits.

Thompson (*writer of the bill*) said the bill also would prohibit the sale of fossils found in the state except as approved by the board.

NOTE: Tony says the bill was passed and is now law in Oklahoma.

**GUIDELINES FOR PALEONTOLOGICAL RESOURCES PROTECTED UNDER THE ARCHAEOLOGICAL AND
PALEONTOLOGICAL RESOURCES PROTECTION ACT (PUBLIC ACT 86-459
prepared by Dr. Russell W. Graham**

Paleontological resources, the remains and traces of non-human prehistoric life, provide important information about past life and environments and document the evolution of our planet. The contributions of amateur paleontologists in reporting important sites and fossils is recognized and it should be noted that this act does not prohibit the collection of fossils in Illinois, except as specified in the following guidelines. Fossil collecting on private land (quarries, mines, etc.) is still permissible with the consent of the land owners. This act does not prohibit the sale of fossils in Illinois as long as they have not been illegally collected. It does not prohibit the legal transport of fossils in Illinois.

Since paleontological resources are non-renewable, the purpose of this act is to protect significant paleontological resources and the scientific information that they contain. It is recognized that paleontological resources exposed on the Earth's surface are vulnerable to destruction by natural processes. To this end, these guidelines distinguish between "surface" collection of fossils and "excavation."

ITEM 1. Surface collections of fossils can be made without a permit from public property, except for properties covered by other statutes (e.g., Nature Preserves, State Parks), at the discretion of the land-managing agency. Surface collection means the removal of fossils from the Earth's surface without the removal of more than one cubic foot of enclosing sediments.

ITEM 2. Excavation of fossils from known sites on public property requires a permit. Excavation means the vertical and/or lateral removal of more than one cubic foot of sediment from around the fossil.

Permitting Process (For Excavation Only)

1. Permits for excavations are issued by the Illinois Historic Preservation Agency.
2. Permits are only issued to qualified paleontologists with either an advanced degree (M.A., M.S., Ph.D.) in paleontology or a related discipline from an accredited university or college or equivalent experience with the scientific methods of field collection of fossils. Documentation must be submitted with the permit application to demonstrate that certain standards of field data will be appropriately collected. As noted in Section 8(b) of the Act, any agency or department of the State of Illinois which has on its staff a professional paleontologist, who meets the minimum qualifications as mandated in Section 9 of the Act and established in these guidelines, and which has in effect a memorandum of agreement with the Historic Preservation Agency for the protection, preservation and management of paleontological resources shall be exempt from the permit requirements established by this Act.
3. As noted in section 8(c) of the act, each permit shall specify all terms and conditions under which the investigation shall be carried out, including, but not limited to, location and nature of the investigation, methods of collection and data recording, and plans for analysis and publication of the results.
4. All fossils and field records resulting from excavations remain property of the State and are managed by the Illinois State Museum. The Illinois State Museum, in consultation with the Historic Preservation Agency, is authorized to establish long-term curation agreements with universities, museums and other organizations as specified in section 7 of the Act.

PROPOSED BLM RULES FOR AMATEUR FOSSIL COLLECTORS
by John Boland, MAPS member

In an earlier issue of MAPS DIGEST, details of the rulemaking conference in Boulder, CO, have been discussed. Ten recommendations of the National Academy of Science on Palontological Collecting were used as a guide. Item 3, as written at the conference, is of special interest to amateur collectors:

3. All BLM and USFS lands, except those covered by the Wilderness Act or especially set aside, shall be open to fossil collecting for scientific, recreational, and educational purposes.

It is of the utmost importance for information exchange, protection of resources and wise land management decisions that non-commercial collectors notify the BLM or USFS of their intention to collect fossil resources, and complete informational forms whenever a vertebrate fossil is discovered. This notification shall result in a rapid response so that collecting can occur in an expeditious manner. If a specimen of unique scientific interest is discovered, the government requests that the collector consider depositing the fossil at an accredited institution for research and educational purposes. The collector will receive public recognition for this contribution to science.

The Federal land manager will provide the collector with relevant information about areas to be visited and a form to be returned if the collector discovers a vertebrate fossil. The form will request the following information:

1. identity of individual(s) and/or institution
2. date of collection
3. geographic location
4. stratigraphic level
5. depository and date of deposit
6. paleontologist consulted, and
7. brief description of discovery,

collection and site characteristics

Additional information from the collector (maps, photographs) will be helpful.

The accompanying letter from the land management agency will stress that scientifically important fossils should be deposited in a recognized public or scientific institution.

Where (a) there is a potential for significant disturbance of other resources (e.g., endangered species, archaeological resources or wilderness areas, etc.); (b) mechanical equipment or explosives are used; or (c) the area of surface disturbance is more than 18 square feet (for BLM land only); scientific, recreational, or educational collectors will be required to apply for a permit **prior** to collecting paleontological specimens on Federal land.

In every case, collectors are responsible for following all applicable laws and regulations. If questions arise, collectors should check with local land managers for information. (*Some states may require permits for all collecting on state owned land or forbid fossils from being removed from the state--contact state geologist in state capital city prior to collecting.*)

Designated sites or areas may be set aside for specific periods of time to allow for scientific study and research.

NOTE: The above proposed rules apply to fossils collected as not-for-sale. Rules for commercial collectors will be negotiated on May 14-15 at Salt Lake City.

Watch for request for public comment on final proposed rules in the FEDERAL REGISTER in late summer.

ADVERTISING SECTION

Ads are \$3.50 per inch (6 lines x 1 column--43 spaces). Send information and checks payable to MAPS to: Mrs. Gerry Norris, 2623 34th Avenue Ct., Rock Island, IL 61201. Phone: (309) 786-6505. This space is a \$3.50 size.

UNIVERSAL FOSSILS CATALOG 109

OFFERING QUALITY FOSSILS AT REASONABLE PRICES. LARGE CATALOG WITH OVER 250 PHOTOS--\$4. P.O. Box 2663, Southfield, MI 48037

FOSSILS, FOSSIL CHARTS, T-SHIRTS, INDEX to NYS Guidebooks (1956-86: \$15.00) and many more items. Send \$1 for 26 page catalog.

IDENTIFY with MAPS

StrataGraphics, 63 Knoll Top Drive, Rochester, New York 14610. 12/90

"Field Guide to New Zealand Geology" by Jocelyn Thornton; Heinemann-Reed. Covers type sections and other accessible areas with photographs, maps and fossil and mineral drawings. **Non-technical.** 214 pages. \$25 U.S. from author, 29 Carlton Street, Wellington 3, New Zealand.

FOSSIL/ROCK SHOW -- Aug. 16-19, 1990.

Strasburg, PA. **Fourth Annual Lost Dutchman Gemboree**, at Historic Strasburg Inn on Tr. 896. Dealers with fine quality fossil specimens. Tailgate space, too (\$30/table daily). Collecting field trips daily. For more information, contact: TAPOMU, Box 8742, Lancaster, PA 17604; (717) 293-8959.

7/90

We would be very interested in receiving any **catalog, lists, and/or price lists** from any MAPS members who sell or trade fossils. We are particularly interested in competitive prices or fair trades for trilobites, ammonites, Green River fossils, dinosaur teeth, and all kinds of pyritized fossils.

Send to Vance McCollum or Matt Swilp, REMAINS TO BE SEEN, 207 Chuker Drive, Summerville, SC 29485

LOCALITIES: Reports on hundreds of exposures in Iowa region and some Arizona. PreCamb-Perm., Jeras., Cret., Tert., Quat. Directory of reports and other services \$6.50 p.pd. Midwest Rockhound Services, 3521 10th Ave. N., Fort Dodge, IA 50501

PALEONTOLOGIST HUNTS

DINOSAUR 'SERIAL KILLER'

excerpts from *The Argus*, Rock Island, IL, 5/3/90

sent by Gil and Gerry Norris

Small land animals--including the ferocious 6-ounce "Mutant Ninja Chipmunk"--thrived while an environmental crisis killed off most giant dinosaurs more than 100 million years ago...

Dr. Robert Bakker, a University of Colorado paleontologist, said fossils recently unearthed from a 130-million-year-old deposit in a rock quarry in Wyoming showed small dinosaurs, mammals, turtles and other animals flourished in the Cretaceous period a few million years after the giant dinosaurs that lived in the Jurassic period became extinct. ...

His preliminary findings were published April 15 in the proceedings of the Fourth North American Paleontological Congress.

With several colleagues, Bakker, who first identified the fossil beds in the 1970s, unearthed a wide array of "fossil miniatures" from the 10- to 12-foot thick deposit known as "Breakfast Bench" near the town of Rock River.

The specimens date to the earliest part of the Cretaceous period, a transitional period following the demise of long-necked, giant dinosaurs such as brontosaurus, supersaurus, and diplodocus. ...

New species unearthed at the site include a 20-pound herbivorous dinosaur, a pair of fierce rodent-like mammals weighing less than a pound each and a neurologically sophisticated turtle, Bakker said. Numerous crocodilian remains also were found...

The sudden appearance of Zofiabaatar, a 6-ounce furry meateater that Bakker nicknamed the "Mutant Ninja Chipmunk," illustrates small mammals were taking evolutionary advantage of the swampy environment during the crisis...

Scientists have long been puzzled by the mass extinctions at the end of the Jurassic

CONTINUED ON PAGE 8

Please ADD the Following NEW MEMBERS to Your Directory:

Jeff Aubry
P.O. Box 34
Clarita, OK 74535
405-428-3431

Self-employed. Will trade. Major interests trilobites, crinoids, & echinoids. Has for trade trilobites, crinoids, & echinoids. Member AAPG. Wants to keep in touch with other fossil collectors.

Van Beall
10835 Beech Creek Dr.
Columbia, MD 21044
301-730-2254

US Army. Will not trade yet. Wishes to learn all about the various aspects of "the business" for possible future retail business. Wants to meet others who can answer his many questions about fossils and who share his enthusiasm.

Norma Beers
Box 132
Lingle, WY 82223

Owner Rock Shop. Will not trade. Wants to purchase fossils and information.

James H. Bey
Bey's Rock Shop
P.O. Box 190
Barto, PA 19504
215-369-0180

Terry T. Brawner
1044 Provence Dr., Apt. A
St. Louis, MO 63125
487-3773

Comm. tech. AT&T. Will trade. Member Eastern MO Soc. of Paleo., St. Louis, MO.

Virginia Brown
6400 W. 72 Terrace
Overland Park, KS 66204

Commercial artist. Will trade. Interested in all invertebrates and flora/fauna. Wants to be involved with others interested in fossils.

Tom Caldwell
6803 Downs Branch Road
Louisville, KY 40228
502-231-0108

Remodier. Will not trade. General interest. Wants to increase fossil knowledge.

Dr. Carl S. Davis
225 2nd St. SE
Cedar Rapids, IA 52401
319-364-0020

Psychologist. May trade. A novice whose interests are just developing. Wants to learn.

Michael E. Eviston
819 Irving A.
Rockford, IL 61101
815-961-0805

Sheet Metal Worker. Will trade. Not much for trade at present. Wants to gain knowledge and contacts with people.

Ray Fairbank
4128 Nobis Drive
Davenport, IA 52802
319-322-4956

Engineer. Will trade. Interested in all fossils, especially blastoids. (ed. note: Ray is a longstanding member who was left out of the membership book.)

Richard M. Felton
1611 N. Ray Ave.
Maryville, MO 64468
816-582-4198

Geology Professor. Will trade. Interests varied. Has for trade various Pennsylvanian fossils. Has a great interest in paleontology.

Dr. Michail A. Gibson
Dept. of Geosci. & Physics
Univ. of Tenn. at Martin
Martin, TN 38238
901-587-7435

Ass't. prof. of Geology. Will trade. Major interest S-D invertebrates, TP invertebrates. Has for trade D fossils from W. Tenn.

Robert & Rita Helwig
3429 Charlotte
Kansas City, MO 64109
816-931-7166

Francis M. Hueber
4806 Morgan Dr.
Chevy Chase, MD 20815
301-657-3945

Donald S. Johnson
109 W. 96 Terr.
Kansas City, MO 64114

William F. Kemnitz
P.O. Box 251
Varna, IL 61375

Roy F. Kinsley
1837 Lebanon Ave, Apt. 4
Belleville, IL 62221
618-234-4039

Lyle E. Kugler
612 8 E. 3rd St.
Aledo, IL 61231
309-582-7364

Glen LaPlaca
555 Lisbon Ave.
Buffalo, NY 14215
716-638-2158

Mat Mann
H.C. 2, Box 19
Quinter, KS 67752
913-754-3866

Darlene & Louisa McDonald
9438 Goddard
Overland Park, KS 66214
913-894-1387

Jim Merrett
5118 West Anherst
Dallas, TX 75209
214-358-3077

Wm. J. Micol
3089 W. Commerce
Milford, MI 48042
313-684-2307

Randall Moles
107 12th St.
Racine, WI 53403
414-632-9393

James Dean Mullins
5A Maple Dr.
Goosecreek, SC 29445
803-553-6997

Rock shop owners. Will trade. MAPS was recommended by Lee & LaVeta Hodges & others.

Museum Curator. Major interest paleobotany--all aspects. Interested in fossils of all sorts and especially the kindred souls who also enjoy them.

Carpenter. Will trade. Has for trade KC area Penn. invertebrates, plants (Ottawa), nodules (MO) Niobrara Cret. W. KS, Pleist. vert. N.E. KS. Wants to promote interest in fossils, collecting, trading with others, meeting people.

Retired.

USAF. Will trade. Major interest trilobites, crinoids, blastoids, shark teeth. Rejoining.

Maintenance Machinist.

Senior Aquarist. Will trade. Interested in all fossils. Member Myrtle Beach Fossil Club.

Professional floral designer/mom is a retiree. Will trade. Major interest shells. Interested in fossils and newsletter.

Retired teacher. Will not trade. Major interest invertebrates. Member Dallas Paleo. Soc, Dallas, TX. Thinks MAPS is fun!

Interested in all fossils.

Dentist. Will not trade yet. Wants to learn more.

Siding mechanic. Will trade. Major interest shark teeth, whale teeth and other land or water mammals. Has for trade bones, teeth, vertebrae. Wants to get into more interesting fossils and display.

Craig P. Nesbit
121 Westmount Dr., #70
Farmington, MO 63640
314-756-2317

Gen. manager retail store chain. Will trade. Has few fossils for trade at this time. Wants to widen knowledge and contacts and trade.

John B. Pate
P.O. Box 44097
Washington, D.C. 20026
202-722-1387

Retired Indust. Hygienist. Will trade. Major interest Cenozoic mollusca, general invertebrate, plants. Has for trade Cenozoic mollusca, general invertebrate, plants. Wants information exchange.

Jon/John Porter
220 North Bemiston
Clayton, MO 63105
721-2236

Broker. Major interest Pennsylvanian & Pleistocene fossils. Member Eastern MO Soc. for Paleo., St. Louis, MO. Wants to learn more.

Larry Shindel
248 Rolling Hills Place
Lancaster, TX 75146
214-223-5572

EEG technologist. Major interest Permian vertebrates. Member Dallas Paleo. Soc.

Don Smarjesse
23628 Stonehenge
Novi, MI 48050
313-476-3386

Retired. Will trade. Has a deep interest in preserving fossils and fossil locations.

Eric Tiahr
38 Ednick Dr.
Belleville, IL 62221
618-277-5391

Intern Architect. Will possibly trade. Major interest sea life from Paleozoic Era. Member Eastern Missouri Soc. for Paleo.

Please Note the Following CHANGES OF ADDRESS and CORRECTIONS.

Frank Bukowski
P.O. Box 15297

Timothy J. Northcutt
5724 Woodson
Mission, KS 66202

Jeffrey P. Tanking
Box 727
Baldwin, KS 66006
913-594-3826

Buried Treasures
Shop # 1B
12 West Mechanic St.
New Hope, PA 18938

Jack Shirley
513-777-0800

Jeff Thomas
P.O. Box 521
(Australia)

Chris Cozart
708-462-9778

David M. Tanking
1900 W. 31st Lot V-18
Lawrence, KS 66046

PALEONTOLOGIST HUNTS DINOSAUR 'SERIAL KILLER'
Continued from page 6

period, and theories focus on such factors as movements of the Earth, starvation, parasites, poisons, changes in climate and meteorites.

But according to Bakker, dinosaurs became extinct because of worldwide diseases that turned into an "epidemiological nightmare."

"Dinosaurs didn't go out with a bang, they went out with worldwide diarrhea," he said.

Big animals travel and are extremely vulnerable to disease, Bakker said. As land bridges formed throughout the globe, the animals spread hundreds of diseases.

SUMMER ISSUE

The Summer issue of the *Digest* will come out around the middle of July. Because the April issue is the EXPO edition and goes out at EXPO, we decided to mail this issue around June 1 and put out the summer issue in July so there wouldn't be such a long gap between the summer issue and the first issue in the fall, which goes out in late September.

NOTE: To the few of you at the end of the alphabet (U.S) who have not yet received your EXPO *Digest*, we ran out of that issue and had to reprint. It has taken some time to get back some of the original photos so the reprints will be of the same quality as the originals. You will be getting your *Digest* as soon as the reprints are done. We appreciate your patience!

The Mid-America Paleontology Society (MAPS) was formed to promote popular interest in the subject of paleontology; to encourage the proper collecting, study, preparation, and display of fossil material; and to assist other individuals, groups, and institutions interested in the various aspects of paleontology. It is a non-profit society incorporated under the laws of the State of Iowa.

Membership in MAPS is open to anyone, anywhere who is sincerely interested in fossils and the aims of the Society.

Membership fee: One year from month of payment is \$10.00 per household. Institution or Library fee is \$25.00. Overseas fee is \$10.00 with Surface Mailing of DIGESTS OR \$25.00 with Air Mailing of DIGESTS.

MAPS meetings are held on the 1st Saturday of each month (2nd Saturday if inclement weather). October & May meetings are scheduled field trips. The June meeting is in conjunction with the Bloomington, IN, Gem, Mineral, Fossil Show & Swap. A picnic is held the fourth weekend in July. November through April meetings are scheduled for 2 p.m. in the Science Building, Augustana College, Rock Island, Illinois. One annual International Fossil Exposition is held in the Spring.

MAPS official publication, MAPS DIGEST, is published 9 months of the year--October through June.

President: Gil Norris, 2623 34th Avenue Ct., Rock Island, IL 61202
1st Vice President: Allyn Adams, 612 W. 51st Street, Davenport, IA 52806
2nd Vice President: Karl Stuekerjuergen, R.R. #1, Box 285, West Point, IA 52656
Secretary: Jo Ann Good, 404 So. West 11th St., Aledo, IL 61231
Treasurer: Sharon Sonnleitner, 4800 Sunset Dr. SW, Cedar Rapids, IA 52404
Membership: Tom Walsh, 501 East 19th Avenue, Coal Valley, IL 61240

FIRST CLASS MAIL

MID-AMERICA PALEONTOLOGY SOCIETY

Mrs. Sharon Sonnleitner
MAPS DIGEST Editor
4800 Sunset Dr. SW
Cedar Rapids, IA 52404

Dated Material - Meeting Notice