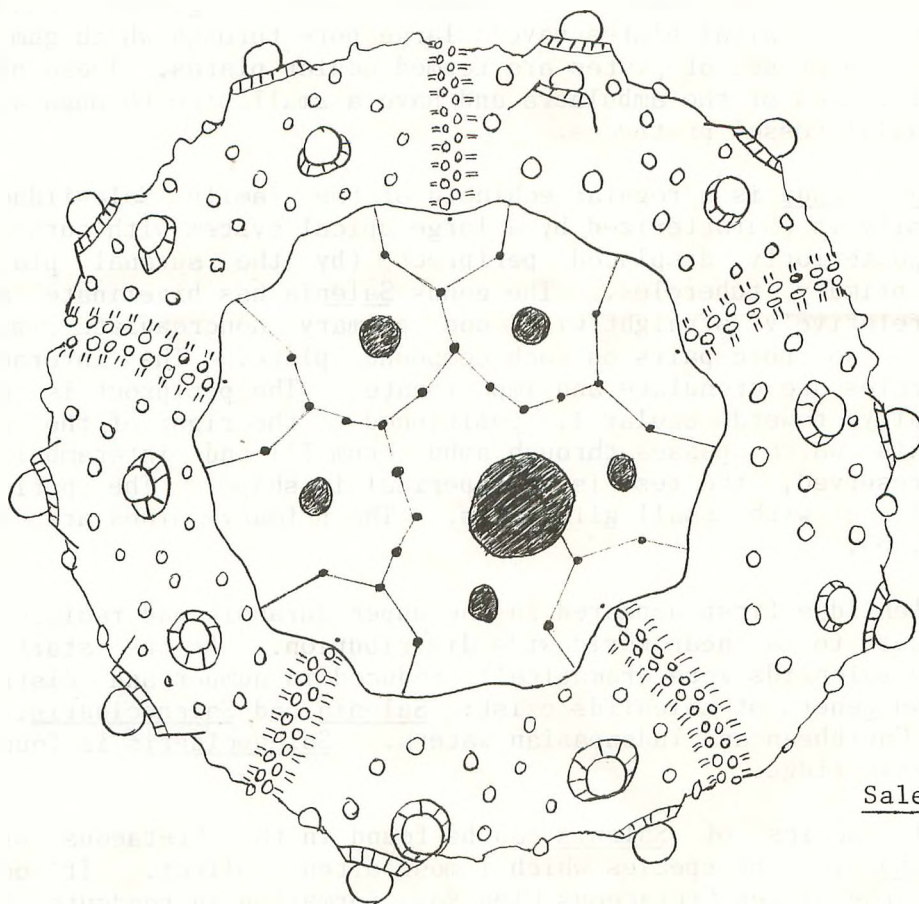


M.A.P.S. *Digest*

Official Publication of
Mid-America Paleontology Society

Volume 9 Number 1
January, 1986



Salenia texana

Salenia texana -- Carlos Bazan, 310 Tamworth, San Antonio, TX 78213

Regular echinoids are some of my favorite fossils. The echinoid test ("shell") is made of numerous plates arranged in a pentameral symmetry. When viewed from above the test is divided into five ambulacral and five interambulacral sections which radiate from the periproct (Fig. 1). On the surface of the plates are tubercles to which spines were attached when the echinoid was alive. The tubercles are termed perforate when there is a central depression in the mamelon (Fig. 2) and imperforate when there is no depression. If the area around the mamelon is ridged, the tubercle is crenulate; if the area is smooth, the tubercle is noncrenulate.

Normal position for a regular echinoid is with the oral ventral side down. The oral surface of the test has a large central opening, the peristome, which contains the mouth. Along the edge of the peristome are ten interambulacral notches, the gill slits (Fig. 3). The upper dorsal surface, aboral aspect, contains two sets of plates which make up the apical system (Fig. 4). The apical system encloses the periproct, the opening which contains the anus. The inner set consists of five genital plates. In mature echinoids genital plates have a large pore through which gametes are released. The outer set of plates are termed ocular plates. These plates are the terminal plates of the ambulacra and have a small pore through which the end of the radial vessel protrudes.

Salenia texana is a regular echinoid of the family Saleniidae. This echinoid family is characterized by a large apical system with suranal plate (Fig. 5), posteriorly displaced periproct (by the suranal plate), and imperforate primary tubercles. The genus Salenia has bigeminate ambulacra which are relatively straight with one primary noncrenulate imperforate tubercle and two pore pairs on each compound plate. The interambulacral primary tubercles are crenulate and imperforate. The periproct is displaced posterodextrally towards ocular I, positioned to the right of the anterior-posterior axis which passes through ambulacrum III and interambulacrum 5. When well preserved, the test is hemispherical in shape. The peristome is relatively large with small gill slits. The primary spines are long and slender (Fig. 6).

The Saleniidae first appeared in the upper Jurassic and radiated during the Cretaceous to a near world wide distribution. By the start of the Paleocene the saleniids were dramatically reduced in number and distribution. Today only two genera of saleniids exist: Salenia and Salenocidaris. Salenia is found in Caribbean and Indoneasian waters. Salenocidaris is found along the mid Atlantic ridge.

Several species of Salenia can be found in the Cretaceous of Texas. Salenia texana is the species which I most often collect. It occurs in outcrops of the lower Cretaceous Glen Rose formation in roadcuts near San Antonio, Texas. The Glen Rose is a limestone formation which ranges from a very dense to loose consistency.

Most of the echinoids found in the Glen Rose are deformed. This is especially so for the irregular echinoids like Heteraster. At least in some locations the Salenia are better preserved with some specimens showing almost no deformity. Long slender Salenia spines can be found in the same outcrops but they are usually fragmentary. Rarely a complete unbroken spine can be found in matrix.

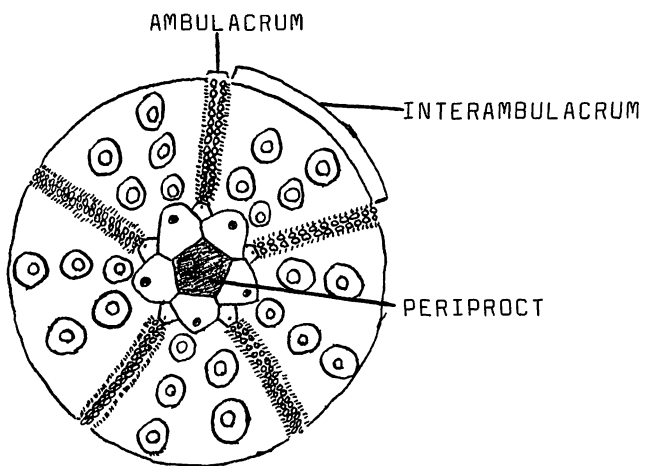


Fig. 1

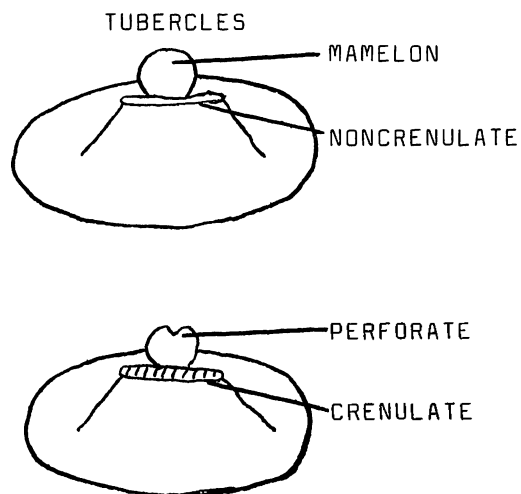


Fig. 2

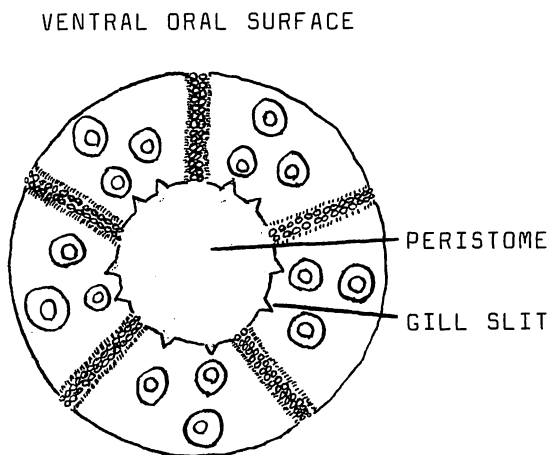


Fig. 3

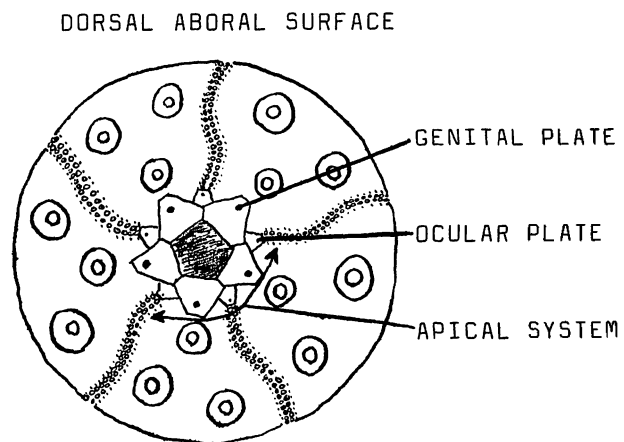


Fig. 4

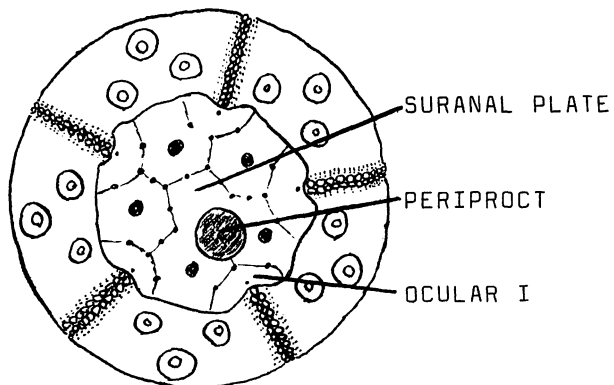


Fig. 5

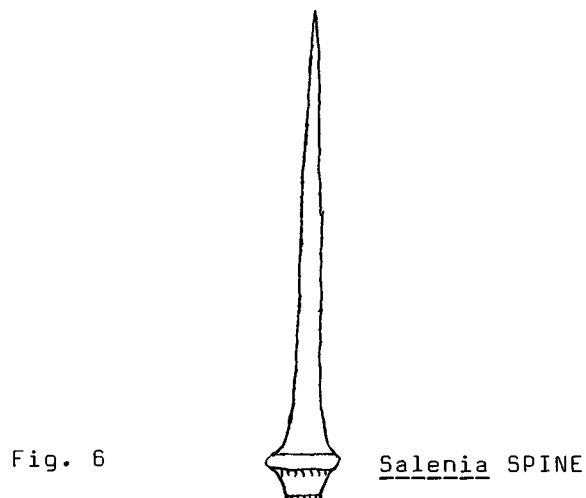


Fig. 6

The Salenia texana specimens that I have found range in size from 11mm to 29mm in horizontal diameter, the ambitus. The peristome diameter is approximately 40% of the ambitus. The height is 60-70% of the test diameter. Spines range in size from 20mm to 40mm.

The associated echinoid fauna is predominantly Heteraster obliquatus which are almost always badly deformed and poorly preserved. They greatly outnumber the Salenia texana by approximately 100:1. On a rare occasion I have found parts of another echinoid, Holactypus, but never a complete specimen. Other fauna include abundant numbers of the protozoan Orbitulina texana, Porocystis globularis (?sponge), internal casts of gastropods and pelecypods, and occasionally a piece of ammonite.

COVER: Thanks to Carlos Bazan, 310 Tamworth, San Antonio, TX 78213, who is responsible not only for all the art work but the description as well.

(☺ ☺ ☺)

Please welcome MAPS new Board of Directors and a most sincere thank you to MAPS hard-working retiring Board of Directors. These loyal MAPS members give generously of their time and talents in order that this super club exist.

(☺☺☺)

MARK YOUR CALENDARS

11 Jan -- MAPS MEETING -- Augustana College
Fryxell Museum, Rock Island, IL
1:00 Board Meeting
2:00 MAPS Meeting -- Dr. Terry
Frest. Pyritized Crinoids
Ordovician. Brainard Fm of
the Maquoketa.

2 SPECIAL NOTES -- *****

DUES are due -- \$10.00

Make checks payable to MAPS
Mail to: Marv Houg, Treasurer
3330 44th St. N.E.
Cedar Rapids 52404

MEMBERSHIP DIRECTORY -- a new Directory this year at EXPO VIII. Check the nodule after your name. If you want a change made, send the change NOW to: Mrs. M. Lillybeck, 1039 - 33rd St. Ct., Moline IL 61265.

If your changes are received after February 15, it will be too late. DON'T WAIT -- This is part of PHASE II.

***** --

(☺☺☺)

1 Feb -- MAPS MEETING -- Monmouth College
Monmouth, IL
1:00 Board Meeting
2:00 MAPS Meeting -- Larry A.
Wiedman, Paleoecologist, Dept.
of Geology. Paleo Environmental
Indicators for the famous Silica
Shale. Middle Devonian -- Ohio
Indiana

11 Apr -- MAPS in conjunction with Western Illinois University, Macomb, Illinois presents EXPO VIII. It's time for the second phase. Phase I -- Dreams
Phase II -- Concrete Plans (See this issue of the DIGEST.) The First concrete plan is to CHECK THE NODULE AFTER YOUR NAME FOR THE MEMBERSHIP DIRECTORY. If it needs updating, do it now--Phase III won't leave any time for updating.

(☺☺☺)

You must stretch to reach your dreams. (Phase I--it never stops.)

SAD NEWS

Fred S. Farrar (The Happy Hermit), Route 2, Box 295, Poplar Bluff, MO 63909 will no longer be making those beautiful MAPS name tags.

MAPS will need to find a new source for supply. If someone out there has a source we would appreciate hearing from you.

Fred has been making name tags since MAPS inception. We will miss you!

A D V E R T I S I N G S E C T I O N

FOR SALE----Mississippian Trilobites

Breviphillipsia sampsoni \$ 5--\$100
Phillipsia swallowi \$10--\$150

Doug DeRosear
 Box 125
 Donnellson, IA 52625

()))

ADD DEPTH TO YOUR COLLECTION

Beautiful Penn. Period Fossil Ferns!
 Great display specimens on flat slabs
 from Pennsylvania. (Not nodules)
 3" X 5" -- \$4.00

A. G. Zvirblis
 22 Yorktown Road
 Mountaintop, PA 18707

()))

2 NEW PALEONTOLOGICAL SOCIETIES

Dallas, Texas -- Dallas Paleontological Society. This group is already planning and doing field trips jointly with Austin Paleo Society. Can someone send names for a newsletter exchange?

Tucson, Arizona -- Richard E. Hill writes-- In early Sept. I got together a bunch of fossil collectors and started the Paleontology Society of Southern Arizona. ..Newsletter, THE FOSSIL RECORD, Rik Hill, Editor. (I am not new to editing having edited astronomical newsletters and publications in the past!)

Our major function is our monthly fossil hunts in the S. Arizona area. My speciality is Paleozoic invertebrates, especially trilobites. I was surprised to find how many collecting sites there are in this end of Arizona. Some of our members have extensive collecting experience, especially R. Ratkevich, the brother of the fossil author... Our first field trip was to Tombstone AZ on the anniversary of the shoot-out at OK Corral! There seems to be history of all ages here.

()))

CORRECTION --

A typo -- The cover of the December DIGEST Fossil #1 should be Harpoceratops falcifer. Thanks to Hilda Maloney, PO Box 1053, Willows CA 95988. Hilda and Tom have a museum they would love to show you if you ever get to Willows.

THE FUTURE OF FOSSIL COLLECTING ON PUBLIC LAND

by Peter L. Larson

Many of you have been following the controversy over who may and who may not collect fossils on Public Land. You have watched several attempts by government agencies (such as the Bureau of Land Management) to promulgate regulations to define what may and what may not be collected. You have seen a Bill introduced in the United States Senate. Some of you have even written letters expressing opinions on how things should be handled. I would like to report on a new effort to gain a consensus among those people who are interested in paleontology, and particularly those people who actively collect fossils.

The National Academy of Science - Board on Earth Sciences has formed a "Committee on Guidelines for Paleontological Collecting". This committee was established to study the problems involved with the collection of fossils from the Public Lands. Upon completion of this investigation, a report will be issued which is intended to provide guidance to the various land management agencies who are responsible for the management of our Public Lands.

The committee consists of representatives from various persuasions within the paleontological and geological community. In addition to scientists the committee has nominated individuals who are to provide input from private industry and the amateur community. I have been nominated to this committee and I would like your help.

In order for me to best fulfill my duties on the committee I need direct input from amateur paleontologists. I would encourage each of you who are interested in the work of this committee to send comments or suggestions to the address listed below. Remember, this committee is considering questions related to Federal and Scientific policy for the collecting of fossils from your Public Land.

Peter L. Larson
 Black Hills Institute
 of Geological Research, Inc.
 P.O. Box 643
 Hill City, SD 57745

A letter from MAPS member Glenn C. Crossman, 319-985-2173, Riceville, IA 50466, dated Dec. 14, 1985, included the above notice which he says will be published in Lapidary Journal.

From Glenn's letter--The history of the controversy is that "15-20 years ago the Bureau of Land Management ramrodded through the limitation of 25# plus one piece for petrified wood maximum 250# per year collected on Public Land". In 1982, with 60 days notice they were about to repeat the

act. At that time they received "about 1200 comments (most of them must have been strongly opposed to the legislation)". Then followed a communication called the "Bureau of Land Management Fact Sheet", which states "...we will rewrite the proposed rules for collecting fossils petrified wood and mineral materials...and give the public another opportunity to comment on the redraft".

Glenn also sent a copy of his own letter addressed to Peter Larson with comments of what he finds undesirable about the present BLM law. In the 1982 campaign his letter was addressed to his Iowa Congressman.

When writing, it is suggested, one write individually as opposed to one letter from a Society with many names signed.

Thank you for your effort. Good writing!

()))

LABELING-CURATING-DOCUMENTING YOUR COLLECTION Why and What to Label

In this series of notes I will consider answers to the following questions: Why label a collection?, What should be labeled?, What should a label contain?, Where can I deposit my collection when I am finished with it? The answer to each of these questions may vary depending on individual circumstances.

The principal purpose of labeling is to make information on individual specimens or collections available to future students, particularly when the collectors are not accessible to answer questions about collecting sites or collecting conditions. In addition, labeled reference collections containing identified specimens from specific localities, especially those no longer collectible, or well preserved specimens of an individual group of fossils, represent a kind of non-renewable scientific resource.

Labeling individual specimens or bulk collections is a very time-consuming task and many collectors are more interested in the fun and excitement of discovery or the opportunity to be outdoors than in recording their finds. However, individual specimens may represent either uncommon forms or uncommonly good preservation of common fossils that, if not collected, will be lost because of weathering (freeze and thaw, rain, temperature changes, and related erosional processes). Because common specimens may provide documentation of the extension of the geographic or the geologic ranges of fossils, they also can be useful to students when they

are from sites that have been destroyed or have not yet been studied.

Professional paleontologists have to portion their time between collecting fossils and studying the fossils collected. Consequently, time is commonly insufficient either to discover or collect all possible sites or to collect repeatedly the same site. Locating new sites and repeatedly collecting older ones is an admirable service performed by local collectors. For example, the Richard Jones family of Crawfordsville, Indiana, donated to the Geology Department of Indiana University a large collection made over many years from a small quarry, now filled. This collection turned out to be the northernmost fossiliferous site known in Indiana at this geologic level and added significantly to a subsequently completed paleontologic study of this rock unit.

Large and repeated collections are necessary in order to estimate the original number of different kinds of fossils originally living at a site. Only a few kinds of fossils are common at any site; most kinds are uncommon or rare. Margaret Kahrs of Seymour, Indiana has added considerably to the brachiopod diversity of a site in Indiana because her repeated visits have yielded rare specimens usually not obtained in a single examination.

In general, identifiable specimens from known geographic sites or geologic levels are worthy of labels. Bulk materials (a shoebox full of miscellaneous specimens) from a single site may require one label per box. Well preserved or identified specimens deserve their own labels.

From a scientific standpoint, the use of collections depends upon their documentation. Unlabeled specimens are used in teaching introductory courses in geology. Labeled specimens are useful in advanced courses and for research projects. The scientific value of a collection to an institution is commonly in proportion to its documentation.

Alan Horowitz, Curator
Department of Geology
Indiana University
1005 East 10th Street
Bloomington, IN 47405

()))

SO MANY OF YOU TO THANK--articles sent, beautiful covers, letters of support, Gil, Gerry, Jim, Allyn, Tom who always help get out the DIGEST. This Editor très lucky!

Keep finding treasures from ancient seas--unless you're near an ancient swamp, forest, or lake, right, Dennis?! JUST FIND THOSE AWESOME TREASURES! Loads of love *Maddy*

NATIONAL FOSSIL EXPOSITION VIII -- 1986

LOCATION AND TIME EXPO VIII will be held at the Student Union, in the Grand Ballroom, on the campus of Western Illinois University, Macomb, Illinois. The simplest way to the site is to turn off IL 67 west on University Drive, then south to the Union. (Follow the signs.) Set-up is permitted on Friday, April 11, beginning at 8:00 a.m.

EXPO HOURS: Friday 1:00 p.m. - 9:00 p.m.

KEYNOTE ADDRESS 9:15 p.m. - Dr. R. A. Robison, Professor
Department of Geology
The University of Kansas
Lawrence, Kansas 66045-2124

Saturday 8:00 a.m. - 5:00 p.m.

Sunday 9:00 a.m. - 3:00 p.m.

TRANSPORTATION There are 2 highways leading into Macomb -- IL 136, an east-west route, and IL 67, a north-south route.

No plane service to Macomb at this time, but we will help to arrange transportation from Moline, Illinois, airport if you will make ADVANCE arrangements with Mrs. Gerry Norris, 2623 - 34th Ave. Ct., Rock Island, IL 61201, 309/786-6505, or Mrs. Madelynne Lillybeck, 1039 - 33rd St. Ct., Moline, IL 61265, 309/764-0921.

LODGING Persons traveling in self-contained camping units may park on the parking lot. See Public Safety located in the Union.

IN ALL CASES IDENTIFY WITH MAPS Macomb area code -- 309 Macomb zip -- 61455

<u>Starr Motel</u>	-- Hwy 67 S and 136 E	<u>Time Out Motel</u>	-- Hwy 67 North
	1507 E. Jackson Rd		311 University Dr.
837-4817	Single \$21.20	837-4838	Single (Queen) \$23.32
	2 (one bed) 24.38		2 (one bed) 26.50
Includes	2 (two beds) 26.50	Includes	2 (two beds) 29.68
tax	3 (two beds) 27.56	tax	4 (two beds) 33.92
	4 (two beds) 31.80		

Holiday Inn -- 1400 N. Lafayette -- 833-5511 or 1-800-HOLIDAY
Single \$37.10 Each additional \$5.30 per person
Double 42.40

Travel Lodge -- 1414 West Jackson -- 833-4521 or 1-800-255-3050
Single \$33.99 2 (two beds) \$42.40
2 (one bed) 37.10 4 (two beds) 42.40

Union -- Contact Gil Norris, 2623 - 34th Avenue Ct., Rock Island, IL 61201
309-786-6505 DO NOT CONTACT Western Illinois University.. These rooms must be rented for both Friday and Saturday. You must request rooms early. You may wish to be on standby.
Single \$53.00 3 people \$84.80
2 people 74.20 4 people 93.28

Dorm -- If you think you might want a room in the dorm we will look into it.
No TV -- community bath -- a hike from the Union -- no meals in the dorm.
There is another conference on campus at the same time and there will be some dorm rooms available if there is enough interest. Contact Gil Norris.

DON'T FORGET -- In all cases identify with MAPS. In all cases lodging includes tax.

PARKING For those living in the Union, parking will be east of the Union with room permits. For others, get visitor permits from Public Safety. Parking in specified lots. After 5:00 p.m. Friday ample parking. Before 5:00 p.m. lots of patience!!

MEALS Meals are available in the Union. Fast food stands in the lower level. Ice cream, superb, too. There are restaurants in town and a deli bar in a grocery nearby.

BANQUET Saturday night at 6:00 p.m. we have a sit down beef dinner. The price remains \$10.00, which MUST be paid in full two weeks in advance. Price includes tax and gratuity. Good meal! Besides a good dinner there is an opportunity for relaxed conversation with friends old and new. It is also an opportunity to say thanks to Western University for providing excellent facilities at most reasonable prices. See you at dinner!

EXPO REGULATIONS Everyone is requested to make advanced registration by MARCH 15, 1986. Mark your calendars now so you don't forget! Send the registration form found in the DIGEST with your requests for tables, banquet, and Union housing reservations to: Gil Norris, 2623 - 34th Ave. Ct., Rock Island, IL 61209. Phone 309-786-6505

ALL TABLES WILL BE ASSIGNED. If you want a table next to someone, or specifically located, SAY SO WHEN YOU SEND YOUR MONEY. Cost of tables is \$10.00 each for a 6' table for the weekend. Half tables may be rented for \$6.00.

DISPLAYS EXPO would not be an EXPO without those spectacular displays. What a gift they are, too. There are always people looking at those awesome treasures. Take time to provide everyone with a glimpse of ancient seas and forests and vertebrates. Look forward to another display from the National Museum. This one on trilobites. Hope to see yours. Tables will be provided at no charge--no limit. Each person is responsible for his/her lights extension cords, prong adapters, table covers. If you need a chair near your display, indicate this on the registration form. Also, approximate dimensions of table space needed.

A L L R E S E R V A T I O N S W I L L B E A C K N O W L E D G E D

THE COMMITTEE INSISTS THAT ALL MATERIALS BE FOSSIL OR FOSSIL RELATED. Mountings, gemstones, minerals, Indian relics, etc., are not permitted.

OTHER ACTIVITIES There will be an EXPO KEYNOTE ADDRESS by Dr. R. A. Robison, Editor of the Treatise, immediately after the show closes Friday. Questions may be asked following the address.

There will be a special slide presentation throughout the show on TRILOBITES.

The Banquet, 6:00 p.m., Saturday night, will be followed by a short business meeting and then the LIVE AUCTION. Everyone is asked to provide a quality specimen for the LIVE AUCTION. The specimen, with full data and name of fossil doner, can be left at the information desk up until 3:00 p.m. Saturday.

If you wish to mail your specimen, send it to Paul Rechten, 7405 Shields, Harvard, IL 60035. Paul will send a postal acknowledgement on receipt of the mailed specimen.

Show Chairman. . . . Marv Houg 3330 44th St. N.E., Cedar Rapids, IA 52402 319-395-0577
Table Reservations . Gil Norris 2623 - 34th Ave. Ct., Rock Island, IL 61201 309-786-6505
Auction. H. Paul Rechten 7405 Shields, Harvard, IL 60035 815-943-4178
Reception Desk . . . Peggy Walsh 501 E. 19th Ave., Coal Valley, IL 60033 309-799-3626
Slide Program. . . . Gil Norris 2623 34th Avenue Ct., Rock Island, IL 61201 309-786-6505
Liaison Wallace Harris 325 E. Franklin, Macomb, IL 61455 309-833-4869
Steve Durnal, Western Illinois University, Macomb, IL 61455

If you have any questions, please contact any of the above names. We will endeavor to help.

NATIONAL FOSSIL EXPO VIII -- REGISTRATION FORM

Please complete the form below, enclose a check payable to MAPS, and mail to:
Gil Norris, 2623 - 34th Ave. Ct., Rock Island, IL 61201, before March 15, 1986.

NAME: _____ PHONE NO: _____

ADDRESS: _____
city state zip

_____ Yes, I will provide a display for EXPO. It will require _____ linear feet of table.

_____ I request (number) of 6' tables for selling and swapping. Cost i \$10.00 per table.
1/2 table \$6.00 I have enclosed a check in the amount of \$ _____.

_____ Banquet Tickets: Cost \$10.00 _____. (Number of tickets).

_____ I request to be next to _____ for my
sell-swap table.

_____ Will you help run EXPO?

_____ Front desk -- Fri _____ a.m. _____ p.m. _____ Evening
Sat _____ a.m. _____ p.m.
Sun _____ a.m. _____ p.m.

_____ Elevator -- Friday: 9-20, 10-11, 11-12, 12-1, 1-2, 2-3
Sunday: 11-12, 12-1, 1-2.

_____ Make EXPO signs for highway exits to Union.

Questions:

Suggestions:

DID YOU SEND YOUR CHECKS FOR YOUR DUES?
DID YOU DECIDE TO UPDATE YOUR NODULE IN THE MEMBERSHIP DIRECTORY?

Thanks and see you at EXPO. IT WILL BE SUPERLATIVE!!
- - - - -
NO ONE EXCEPT THE GUARD IS ALLOWED ON THE SHOW FLOOR FOR ANY REASON AFTER SHOW HOURS.
- - - - -
A post EXPO field trip on Monday, April 14. Bring warm clothes. Mid-west winters are tricky.
- - - - -

Address Changes -- Please update your Membership DirectoryROBERT BILLMAN 3840 Calvert, Woodson Terrace, MO 63134ANNE (BURLEIGH) MCKESSY 2319 Lorraine Ave., Kalamazoo, MI 49008 616-345-0728R. JOE COLLINS 24405 Beech Rd., Southfield, MI 48034DR. R. E. JENSEN Upper Glann Rd., Apalachin, MI 13732 (Glann is correct spelling)J. ANDREW MITCHELL 140 Edison Avenue, Detroit MI 48202JOE & CECY ARNDT
19 Field
Irvine, CA 92720
714-552-6638Supervising Construction Inspector & Mechanical Designer
Will trade. Major interest--1. Condrichthys, 2. Gastropoda
& esp. Epitoniidae. Has same + others for trade (Europe,
California, Gulf Coast of U.S.) Appreciate interface &
friendship with individuals of similar interests and to re-
ceive news and articles on Paleo subjects and localities.MICHAEL J. COFFEY
200 N Page St
Stoughton WI 53589
608-873-5511Zoologist. Will possibly trade. Major interest Palawozoic
limestone of mid-west. Has Ordovician invertebrates for
trade. Has a mutual interest with other members.LUCINDA, ROBERT, ROD & CELINE CONRAD Sales - Mineral & Fossil Gallery. Has nothing to
1816 Paseo de la Conquistadora trade. Interest non-exclusive. Wants to become a member
Santa Fe, NM 87501 because DIGEST has a lot of information from which we can
505-982-3457 learn.JOHN P. FISCHNER
Rout 1, Box 806
Needville, TX 77461
409-443-3675Sculptor. Will trade. Major interest Dinosaurs and all
Permian through Cretaceous vertebrates. Has statuary for
trade. Wants to become a member because loves fossil
people and shows.GENE HARRIS
4736 Aubrey Avenue
Philadelphia, PA 19114
215-331-7144Firefighter. Will trade. Major interest vertebrates, par-
ticularly dinosaurs, ammonites, fish, plants. Has Miocene
shark teeth, Mososaur vertebra, Penna. plants. Wants to
join because he is particularly interested in swapping
fossils through mail.JOY HATFIELD
1560 N.W. 22nd St.
Crystal River, FL 32629
904-795-2889(?)Rock Shop Owner. Will trade. Has all Florida fossils:
shark teeth, mammoth, rhino, bison, deer. Wants to share
interest with other people that are fossil collectors.JOHN MCLELAND
2518 San Diego Dr.
Arlington, TX 76015
817-265-0544Student/Pepperidge Farms Inc., Will trade. Major interest
invertebrates exp. brachiopods. Has invertebrates from
Texas for trade. Wants to expand knowledge and to meet
other members.PATRICIA A. RUTKOWSKI
24860 Crowley
Taylor, MI 48180
313-291-5861Will trade. Major interest echinoderms, vertebrates, etc.
Has crinoids, blastoids, trilobites, gastropods, corals,
brach, etc to trade. Wants to contact others with the
same interest.BOB YOUNG
3103 Brockington Dr.
Las Vegas, NV 89120
702-458-1348Helicopter Pilot. Will trade. Major interest Cambrian
trilobites/crinoids Penn/Miss plants. Has the same for
trade. Would like to be in contact with other members to
increase my knowlege. Also would like to organize a
Nevada chapter.

The Mid-America Paleontology Society (MAPS) was formed to promote popular interest in the subject of paleontology, to encourage the proper collecting, study, preparation, and display of fossil material; and to assist other individuals, groups and institutions interested in the various aspects of paleontology. It is a non-profit society incorporated under the laws of the State of Iowa.

Membership in MAPS is open to anyone, anywhere who is sincerely interested in fossils and the aims of the Society.

Membership fee: January 1 through December 31 is \$10.00 per household.

MAPS meetings are held on the 1st Saturday of each month (2nd Saturday if inclement weather). September, October, May, June and July meetings are scheduled field trips. The August meeting is in conjunction with the Bedford, Indiana Swap. November through April meetings are scheduled for 2 p.m. in the Science Building, Augustana College, Rock Island, Illinois. One annual International Fossil Exposition is held in the Spring.

MAPS official publication, MAPS DIGEST, is published 9 months of the year--October through June.

President: Karl Stuekerjuergen, Rt. 1, West Point, IA 52656

1st Vice President: Gil Norris, 2623 - 34th Avenue Ct., Rock Island, IL 61201

2nd Vice President: Doug DeRosear, Box 125, Donnellson, IA 52625

Secretary: Jo Ann Good, 410 N.W. 3rd Street, Aledo, IL 61231

Treasurer: Marvin Houg, 3330 44th St. N.E., Cedar Rapids, IA 52402



CYATHOCRINITES

MID-AMERICA PALEONTOLOGY SOCIETY

Mrs. Madelynne M. Lillybeck
MAPS DIGEST Editor
1039 - 33rd St. Ct.
Moline, IL 61265

FIRST CLASS MAIL

Allyn & Dorris Adams
612 W. 51st Street
Davenport, IA 52806

Dated Material - Meeting Notice