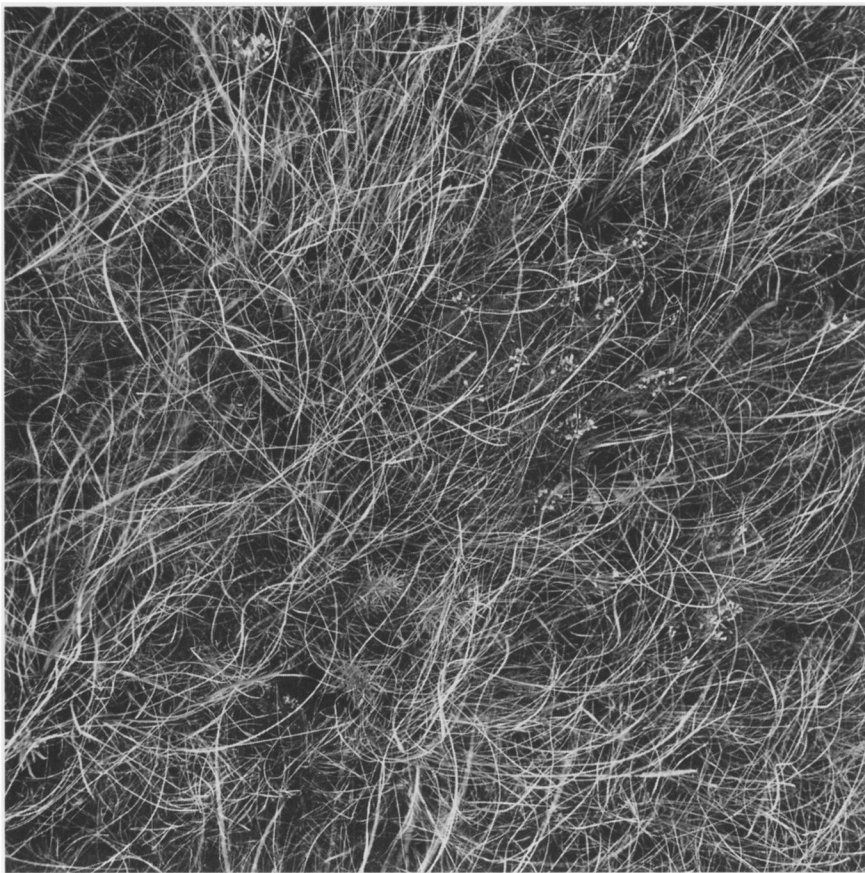


*Terry Evans*



**Mixed grasses, Fent's Prairie, Salina, Kansas, 1978.**



**Solomon River Oxbow, Ottawa County, Kansas, 1990.**



Smoky Hill Bombing Range, Saline County, Kansas, 1990.



**Interstate 35 intersecting the Flint Hills, Chase County, Kansas, 1994.**